

## **COPYRIGHT NOTICE**

This geotechnical log and its associated data (the Document) is licensed by the Queensland Department of Transport and Main Roads under the [Creative Commons Attribution 4.0 Licence](#) (CC BY 4.0). When reusing the Document, in whole or in part, please attribute the Department as follows: "*(c) State of Queensland (Department of Transport and Main Roads) 2020, licensed under the CC BY 4.0 Licence*". This licence does not apply to the Queensland Government logo or trademarks.

## **LIMITATION OF LIABILITY**

The CC BY 4.0 Licence contains a comprehensive Disclaimer of Warranties and Limitation of Liability. In addition, please note that this Document was prepared for Departmental use only. Reuse of the Document by anyone for any other purpose could result in error and/or loss. You should obtain professional advice before making decisions based on the contents of the Document.

When reproducing any part of this Document, you must also reproduce this limitation of liability notice in addition to the italicised attribution statement above.

Retrieved from the Queensland Geotechnical Database <http://qgd.org.au/>



# ENGINEERING BOREHOLE LOG

FOR GEOTECHNICAL TERMS AND SYMBOLS REFER FORM F:GEOT 017/6-2010

|              |                      |
|--------------|----------------------|
| BOREHOLE No  | <u>BH01</u>          |
| SHEET        | <u>1</u> of <u>1</u> |
| REFERENCE No | <u>H11000</u>        |

PROJECT Noonan Range Geotechnical Investigation  
 LOCATION Cut 1 - O/S Approx. 5m West Survey Peg COORDINATES 492180.2 E; 7102586.4 N  
 PROJECT No FG5917 SURFACE R.L. 108.46m PLUNGE \_\_\_\_\_ DATE STARTED 22/3/11 GRID DATUM MGA94  
 JOB No 128/14/19 HEIGHT DATUM AHD BEARING \_\_\_\_\_ DATE COMPLETED 22/3/11 DRILLER Drillsure Pty Ltd

| DEPTH (m) | R.L. (m) | AUGER CASING WASH BORING CORE DRILLING | RQD (%) | CORE REC %  | SAMPLE | MATERIAL DESCRIPTION  | LITHOLOGY | USC | WEATHERING | INTACT STRENGTH |    |   |   |   |    | DEFECT SPACING (mm) | GRAPHIC LOG | ADDITIONAL DATA AND TEST RESULTS | SAMPLES            | TESTS                                |        |
|-----------|----------|--|---------|-------------|--------|---|-----------|-----|------------|-----------------|----|---|---|---|----|---------------------|-------------|----------------------------------|--------------------|--------------------------------------|--------|
|           |          |  |         |             |        |   |           |     |            | EH              | VH | I | M | J | VL |                     |             |                                  |                    |                                      | EL     |
| 0         | 108.46   |  |         |             |        | <b>Clayey SILT</b><br>Mottled brown, moist.   |           |     |            |                 |    |   |   |   |    |                     |             |                                  |                    |                                      |        |
| 107.86    |          |  |         |             |        | 0.3m: Becoming grey.  |           |     |            |                 |    |   |   |   |    |                     |             |                                  |                    |                                      |        |
|           |          |  |         |             |        | <b>Sandy SILT</b><br>Mottled brown, moist.  |           |     |            |                 |    |   |   |   |    |                     |             |                                  |                    |                                      |        |
| 107.16    |          |  |         |             | A      | <b>SANDSTONE</b><br>Fine to medium grained sedimentary rock<br><b>XW:</b> Light grey with red mottling.                           |           |     |            |                 |    |   |   |   |    |                     |             |                                  | 6.9,15<br>N=24     | SPT                                  |        |
|           |          |  |         |             | B      | Has the engineering properties of a very stiff to hard sandy clay.<br><br>Rock structure barely visible.<br><br>Coring from 3.5m. |           |     |            |                 |    |   |   |   |    |                     |             |                                  | 22,30/90mm<br>N>50 | SPT                                  |        |
|           |          |  |         |             | C      |   |           | XW  |            |                 |    |   |   |   |    |                     |             |                                  | 8,20,23<br>N=43    | SPT                                  |        |
|           |          |  | (46)    |             |        |   |           |     |            |                 |    |   |   |   |    |                     |             |                                  |                    |                                      |        |
|           |          |  |         | 100<br>(38) |        |   |           |     |            |                 |    |   |   |   |    |                     |             |                                  |                    | Is(50) = 0.06MPa<br>Is(50) = 0.03MPa | x<br>o |
| 102.71    |          |  |         | 13          |        | 5.10-5.75m: Core loss   |           |     |            |                 |    |   |   |   |    |                     |             |                                  |                    |                                      |        |
|           |          |  |         |             |        | Borehole terminated at 5.75m  |           |     |            |                 |    |   |   |   |    |                     |             |                                  |                    |                                      |        |

REMARKS \_\_\_\_\_

LOGGED BY  
JM

Project: **NOONAN RANGE**

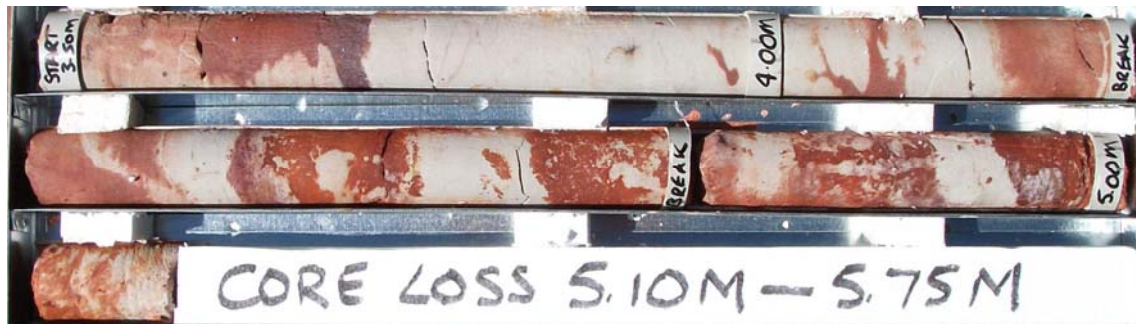
Borehole No: **BH 1**

Start Depth: 3.50m

Finish Depth: 5.75m

Project No: FG 5917

H No: 11000



SCALE 1:5

F:GEOT043/1