

## **COPYRIGHT NOTICE**

This geotechnical log and its associated data (the Document) is licensed by the Queensland Department of Transport and Main Roads under the [Creative Commons Attribution 4.0 Licence](#) (CC BY 4.0). When reusing the Document, in whole or in part, please attribute the Department and author as follows: "*(c) State of Queensland (Department of Transport and Main Roads) 2022, licensed under the CC BY 4.0 Licence, prepared by Insitu Geotech Services*". This licence does not apply to logos or trademarks.

## **LIMITATION OF LIABILITY**

The CC BY 4.0 Licence contains a comprehensive Disclaimer of Warranties and Limitation of Liability. In addition, please note that this Document was prepared for Departmental use only. Reuse of the Document by anyone for any other purpose could result in error and/or loss. You should obtain professional advice before making decisions based on the contents of the Document.

When reproducing any part of this Document, you must also reproduce this limitation of liability notice in addition to the italicised attribution statement above.

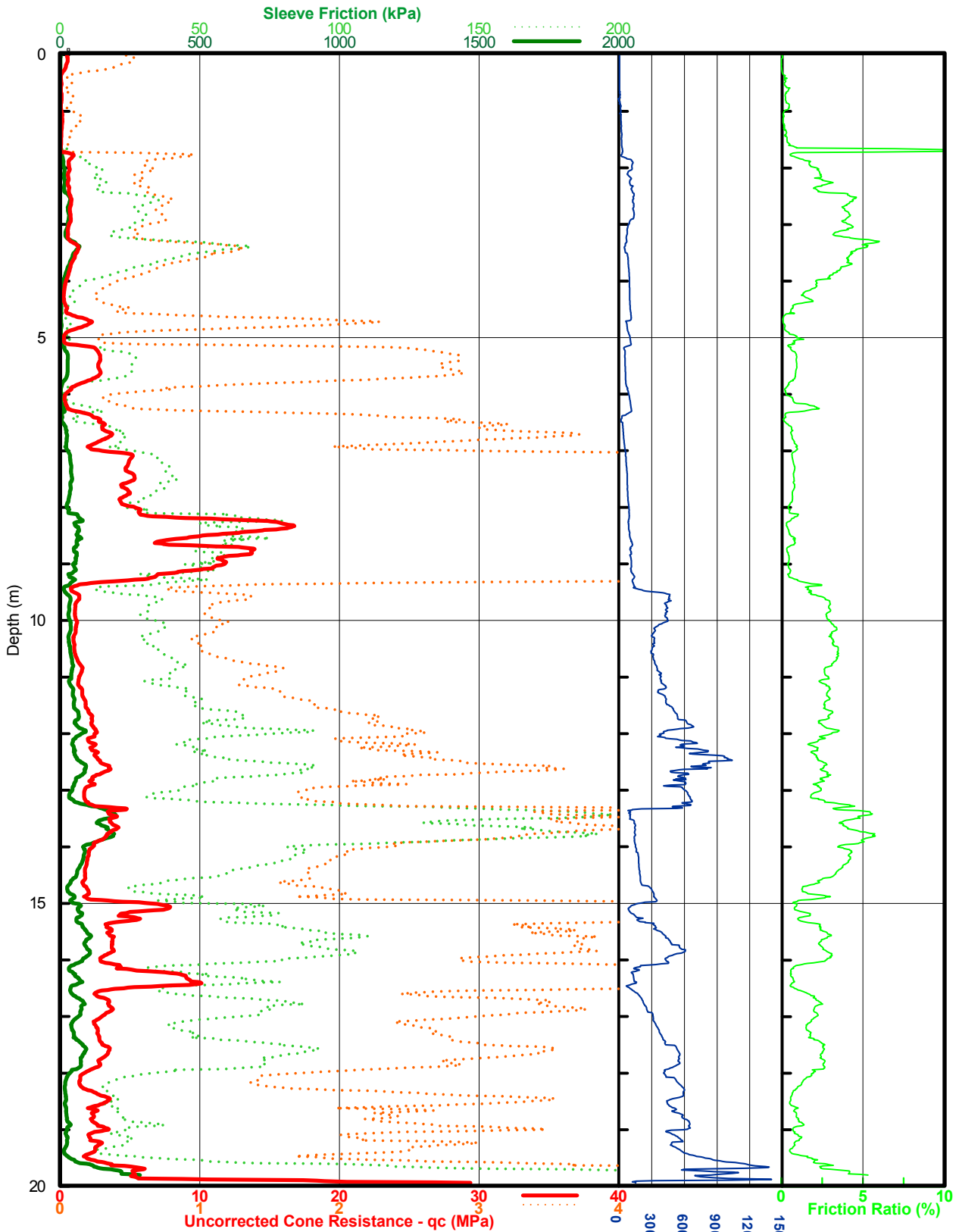
Retrieved from the Queensland Geotechnical Database <http://qgd.org.au/>

This log has been contributed to the Queensland Geotechnical Database with the permission of Insitu Geotech Services.

# CONE PENETROMETER TEST RESULT

**TMR - BHUP**  
**Caloundra Interchange to Sunshine Motorway**  
**Sunshine Coast QLD**

# CPT105



Job Number : G16-01-03  
 Test Date : 19/01/2016  
 DGPS Position : 56 J 0504635, 7043611  
 DGPS Format : WGS 84  
 Rig : Eileen  
 Cone Number : C10CFIIP.C14268  
 Predrill Depth : 0.00m  
 Dissipation Tests @ : N/A  
 Terminated Due To : Lifted Rig

Tested By : Ryan Currell  
 Test Category : IGS-1C  
 Checked By : Mitchell Ebrington

Note : Pushed through backfill in predrilled hole to approx 1.8m

Pore Pressure (kPa)

Insitu  
 Geotech  
 Services  
 Pty Ltd

