

COPYRIGHT NOTICE

This geotechnical log and its associated data (the Document) is licensed by the Queensland Department of Transport and Main Roads under the [Creative Commons Attribution 4.0 Licence](#) (CC BY 4.0). When reusing the Document, in whole or in part, please attribute the Department and author as follows: "*(c) State of Queensland (Department of Transport and Main Roads) 2023, licensed under the CC BY 4.0 Licence, prepared by ENGEO*". This licence does not apply to logos or trademarks.

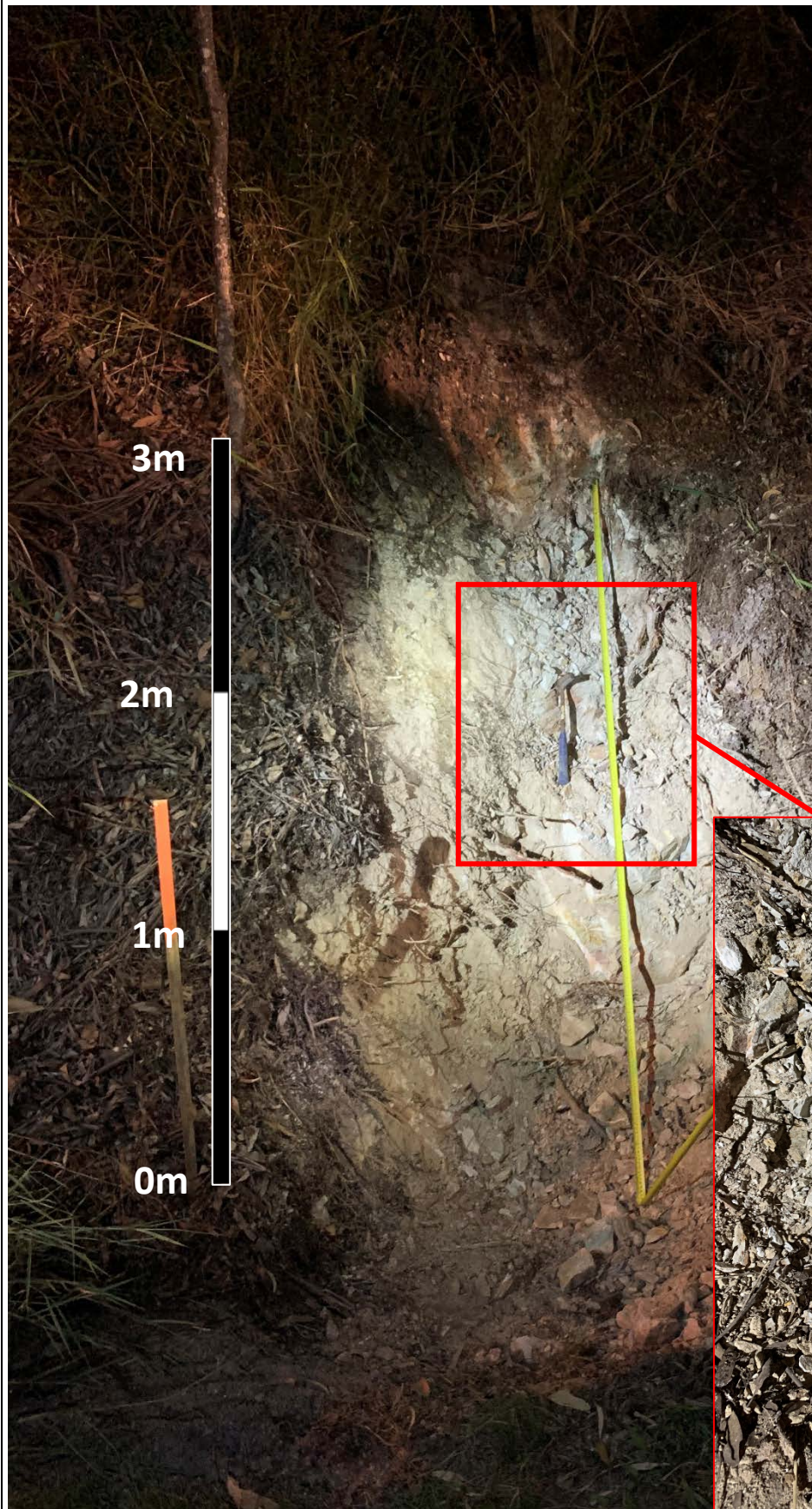
LIMITATION OF LIABILITY

The CC BY 4.0 Licence contains a comprehensive Disclaimer of Warranties and Limitation of Liability. In addition, please note that this Document was prepared for Departmental use only. Reuse of the Document by anyone for any other purpose could result in error and/or loss. You should obtain professional advice before making decisions based on the contents of the Document.

When reproducing any part of this Document, you must also reproduce this limitation of liability notice in addition to the italicised attribution statement above.

Retrieved from the Queensland Geotechnical Database <http://ggd.org.au/>


This log has been contributed to the Queensland Geotechnical Database with the permission of ENGEO.



0-3m ARGILLITE (Dcf) HW:

Pale grey mottled orange brown, fine grained, foliated, very low to low strength.

- GSI = 30
- Js: 76/002 Sm, TI or OP, Pln, Fe Stn or soil FL, close to medium spaced, 0.3m – 0.5m persistence
- Js: 48/152 Sm, TI or OP, Pln, Fe Stn or soil FL, close to medium spaced, 0.3m – 0.5m persistence
- Js: 48/283 Sm, TI or OP, Pln, Fe Stn or soil FL, close to medium spaced, 0.3m – 0.5m persistence
- Fp: 48/062 Sm, TI or OP, Pln, Fe Stn or soil FL, laminated.

	<p>Title: S-TP03 Cutting Observation and log</p>	Client: Aussie Hydrovac Services	
		Date: 17/06/2021	
		Project: Beaudesert-Beenleigh road upgrade 18840.000.001	
		Drawn: RC	
		Checked: JA	
Easting: 519095.78		Northing: 6933243.04	