

COPYRIGHT NOTICE

This geotechnical log and its associated data (the Document) is licensed by Queensland Hydro Pty Ltd under the [Creative Commons Attribution 4.0 Licence](#) (CC BY 4.0). When reusing the Document, in whole or in part, please attribute as follows: "(c) *Queensland Hydro Pty Ltd 2025, licensed under the CC BY 4.0 Licence, prepared by WSP*". This licence does not apply to logos or trademarks.

LIMITATION OF LIABILITY

The CC BY 4.0 Licence contains a comprehensive Disclaimer of Warranties and Limitation of Liability. In addition, please note that this Document was prepared for Queensland Hydro Pty Ltd use only. Reuse of the Document by anyone for any other purpose could result in error and/or loss. You should obtain professional advice before making decisions based on the contents of the Document.

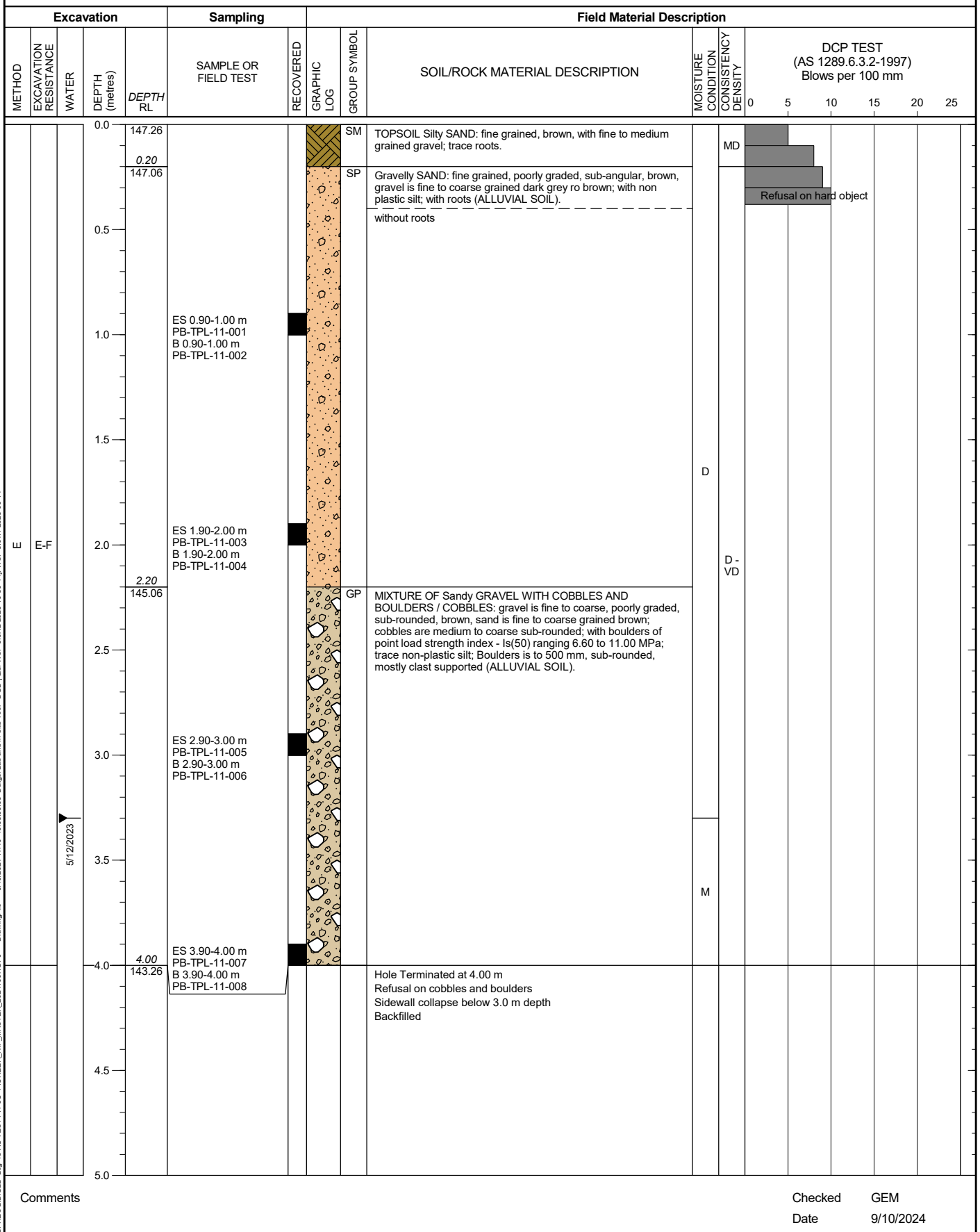
When reproducing any part of this Document, you must also reproduce this limitation of liability notice in addition to the italicised attribution statement above.

Retrieved from the Queensland Geotechnical Database <http://qgd.org.au/>



Sheet 1 of 1

Date: 5/12/2023
Logged: AV





TPL-11-1 Test pit excavation - sidewall collapse occurring below 3.0 m below ground level



TPL-11-2 Test pit excavated spoil



TITLE

Queensland Hydro
Netherdale
Pioneer-Burdekin Pumped Hydro Energy
Storage
TPL-11

DRAWN

TH

DATE

6/06/2024

CHECKED

GEM

DATE

6/06/2024

SCALE

Not To Scale

A4

PROJECT No

PS138693

FIGURE No

1/1