

## **COPYRIGHT NOTICE**

This geotechnical log and its associated data (the Document) is licensed by Insitu Geotech Services under the [Creative Commons Attribution 4.0 Licence](#) (CC BY 4.0). When reusing the Document, in whole or in part, please attribute Insitu Geotech Services as follows: "*(c) Insitu Geotech Services 2020, licensed under the CC BY 4.0 Licence*". This licence does not apply to logos or trademarks.

## **LIMITATION OF LIABILITY**

The CC BY 4.0 Licence contains a comprehensive Disclaimer of Warranties and Limitation of Liability. In addition, please note that this Document was prepared for Insitu Geotech Services use only. Reuse of the Document by anyone for any other purpose could result in error and/or loss. You should obtain professional advice before making decisions based on the contents of the Document.

When reproducing any part of this Document, you must also reproduce this limitation of liability notice in addition to the italicised attribution statement above.

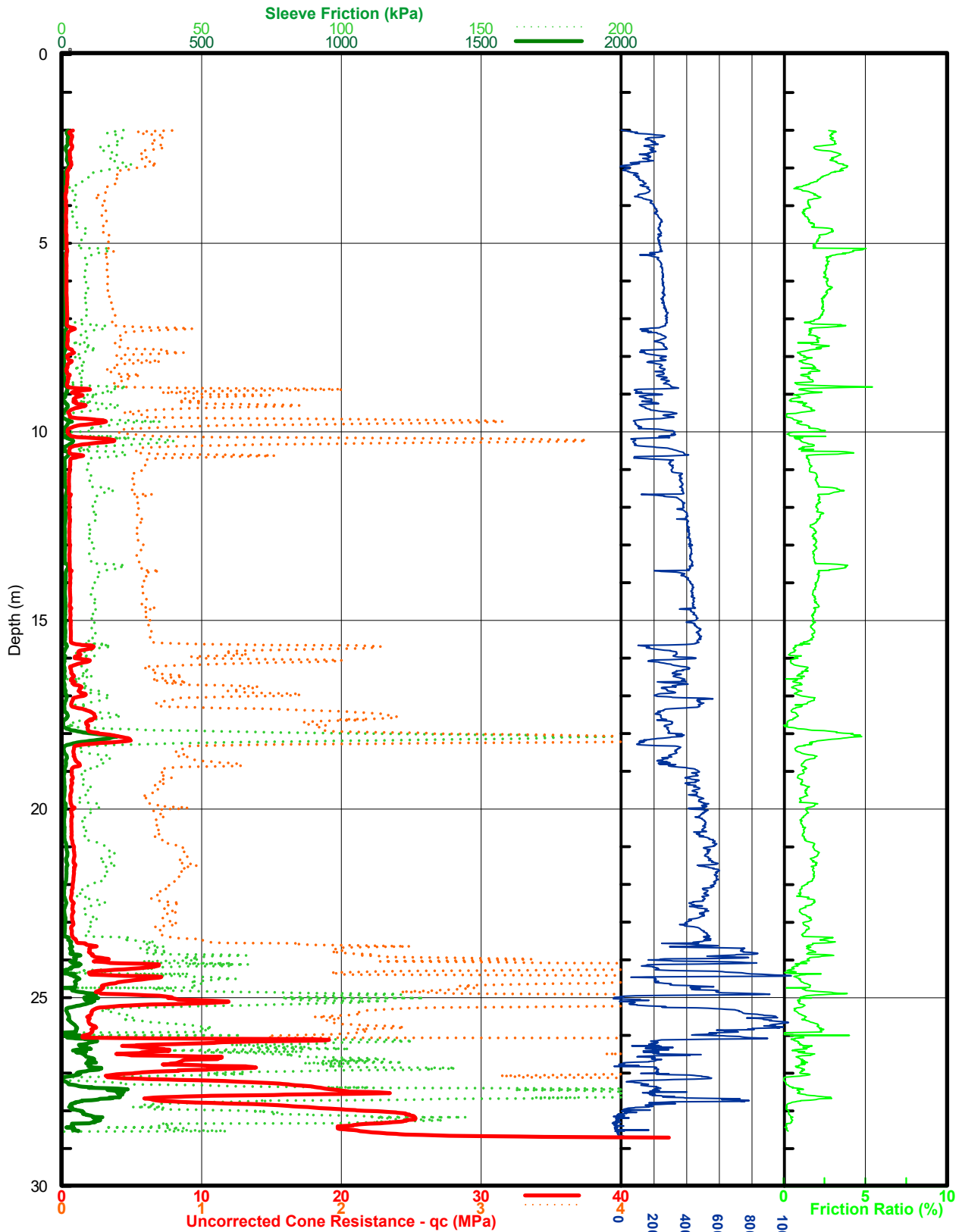
Retrieved from the Queensland Geotechnical Database <http://qgd.org.au/>

This log has been contributed to the Queensland Geotechnical Database with the permission of Insitu Geotech Services.

# CONE PENETROMETER TEST RESULT

QLD AGS  
 AGS Exhibition  
 New Farm QLD

# AGS2020-01



Job Number : G20-02-04  
 Test Date : 10/12/2020  
 GPS Position : 56J 504929.4, 6961129.8  
 GPS Format : GDA94  
 Rig : Lizzy  
 Test Category : IGS-3C  
 Predrill Depth : 2.00m  
 Cone Stabilisation @ : 4.77m  
 Dissipation Tests @ : 13.67m & 24.53m  
 Terminated Due To : Tip Refusal

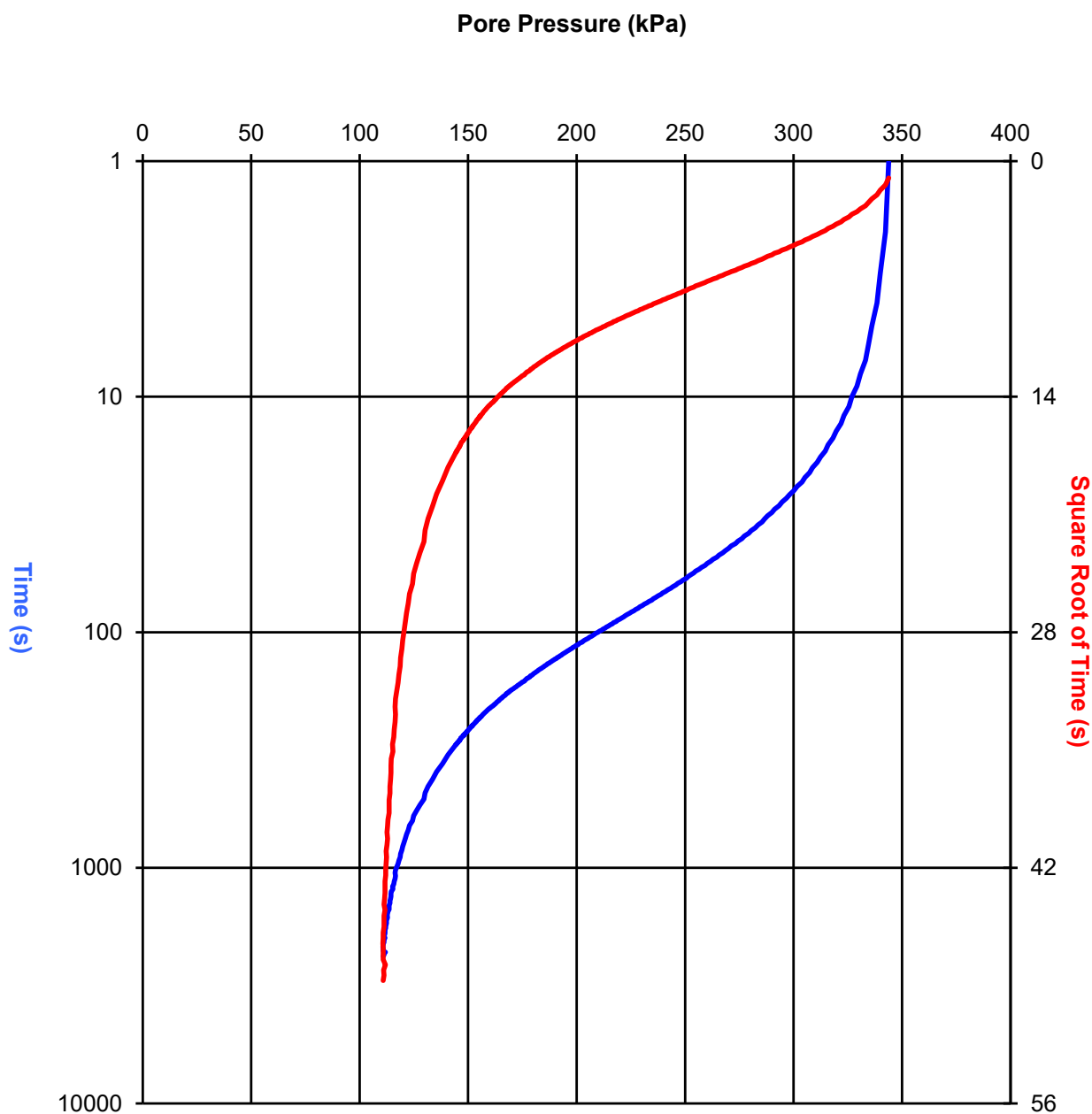
Cone Number : S15CFIIP.S19288  
 Calibration Date : 30/11/2020  
 Cone Capacity : 100MPa  
 Cone Diameter : 43.33mm  
 Cone NAR : 0.820  
 Tested By : Dean Treloar  
 Checked By : Mark Chapman



# PORE PRESSURE DISSIPATION TEST RESULT

QLD AGS  
AGS Exhibition  
New Farm QLD

AGS2020-01  
Depth: 13.67m



Tested By: Dean Treloar  
Test Duration: 0 Hours, 39 Minutes  
Test Date: 10/12/2020  
Job No: G20-02-04  
Cone: S15CFIIP.S19288

