

COPYRIGHT NOTICE

This geotechnical log and its associated data (the Document) is licensed by the Queensland Department of Transport and Main Roads under the [Creative Commons Attribution 4.0 Licence](#) (CC BY 4.0). When reusing the Document, in whole or in part, please attribute the Department as follows: "*(c) State of Queensland (Department of Transport and Main Roads) 2020, licensed under the CC BY 4.0 Licence*". This licence does not apply to the Queensland Government logo or trademarks.

LIMITATION OF LIABILITY

The CC BY 4.0 Licence contains a comprehensive Disclaimer of Warranties and Limitation of Liability. In addition, please note that this Document was prepared for Departmental use only. Reuse of the Document by anyone for any other purpose could result in error and/or loss. You should obtain professional advice before making decisions based on the contents of the Document.

When reproducing any part of this Document, you must also reproduce this limitation of liability notice in addition to the italicised attribution statement above.

Retrieved from the Queensland Geotechnical Database <http://qgd.org.au/>



**Queensland
Government**

Department of
Main Roads

ENGINEERING BOREHOLE

FOR GEOTECHNICAL TERMS AND
SYMBOLS REFER FORM F:GEOT 017/3-2005

BOREHOLE No BH2

SHEET 1 of 2

REFERENCE No H9662

PROJECT IPSWICH MOTORWAY / LOGAN MOTORWAY GEOTECHNICAL INVESTIGATION

LOCATION Between Pier 1 and Pier 2, Approximate Chainage 70m, about 1.5m right of control MCK1-C. COORDINATES 29719.2 E; 147233.2 N

PROJECT No FG5404 SURFACE R.L. 30.40 DATE STARTED 25/07/05 DATUM Ipswich Motorway

JOB No 148/17A/57 DATUM AHD DATE COMPLETED 25/07/05 DRILLER Drillsure

DEPTH (m)	R.L. (m)	AUGER CASING WASH BORING CORE DRILLING	RQD (%)	CORE REC %	SAMPLE	MATERIAL DESCRIPTION	USC WEATHERING	INTACT STRENGTH						DEFECT SPACING (mm)	GRAPHIC LOG	ADDITIONAL DATA AND TEST RESULTS	SAMPLES TESTS
								EH	EH	EH	EH	EH	EH				
0	30.40					Topsoil (Driller's log only)											
1	29.90					SANDSTONE Pale orange grey, fine grained, dry. Exhibits engineering properties of very dense Clayey Silty Sand.	XW								10/40mm HB N>50	SPT	
2	28.90		(0)			Pale grey with orange brown iron stained bands in parts. Fine grained with occasional siltstone interbeds. Generally massive with faint bedding 0-10°.	HW										
3	27.40		33 (95)			Defects mostly dip 0°, 10°, 50°, 60°, 80-90°. Defect surfaces are mostly PL, SM-SR, C, CN. Some 80-90° surfaces are PL, SR-R with iron stained grey clay infill 2mm thick. Numerous drilling induced partings, parallel to bedding. Below 4.5m, pale grey, some yellow brown iron staining. Becoming fine to medium grained.									Is(50)=0.65 MPa Is(50)=0.47 MPa	x o	
4													XW band		Is(50)=0.11 MPa Jt, 60°, PL, SM, C CNs(50)=0.10 MPa	x o	
5													HW-XW band, dense clayey sand		Is(50)=0.08 MPa Is(50)=0.11 MPa	x o	
6			100 (100)										CL seam, 0°, St				
7							MW										
8													Jt, 80°-90°, PL SM-SR, C-T, CL infill up to 2mm thick				
9			100 (100)										Jt, 60°, PL, T		Is(50)=0.22 MPa Is(50)=0.40 MPa	x o	
9													MW shale band, 20mm thick, 0°				
9													Jt, 80°-90°, PL-Un, SR-R, C orange grey clay infill 2mm thick		Is(50)=0.29 MPa Is(50)=0.35 MPa	x o	
9													Jt, 10°, PL, SM, C clay infill 1mm Jt, 20°, PL, SM, C thin CL film				
10	20.95					Pale grey, trace iron staining. Occasionally medium to coarse grained, massive bands.	SW								Is(50)=0.30 MPa	x	

REMARKS No groundwater reported during drilling. See Additional Descriptive Coding sheet for abbreviations.

LOGGED BY
JML



**Queensland
Government**

Department of
Main Roads

ENGINEERING BOREHOLE

FOR GEOTECHNICAL TERMS AND
SYMBOLS REFER FORM F:GEOT 017/3-2005

BOREHOLE No BH2

SHEET 2 of 2

REFERENCE No H9662

PROJECT IPSWICH MOTORWAY / LOGAN MOTORWAY GEOTECHNICAL INVESTIGATION

LOCATION Between Pier 1 and Pier 2, Approximate Chainage 70m, about 1.5m right of control MCK1-C. COORDINATES 29719.2 E; 147233.2 N

PROJECT No FG5404 SURFACE R.L. 30.40 DATE STARTED 25/07/05 DATUM Ipswich Motorway

JOB No 148/17A/57 DATUM AHD DATE COMPLETED 25/07/05 DRILLER Drillsure

DEPTH (m)	R.L. (m)	ALUGER CASING WASH BORING CORE DRILLING	RQD (%)	CORE REC %	SAMPLE	MATERIAL DESCRIPTION	USC WEATHERING	INTACT STRENGTH					DEFECT SPACING (mm)	GRAPHIC LOG	ADDITIONAL DATA AND TEST RESULTS	SAMPLES TESTS
								EH	VH	HM	JL	EL				
10	20.40					Sandstone Cont'd. As above. Generally massive with occasional defects mostly parallel bedding or at 40°. Surfaces are mostly PL, SM-SR, C, CN with occasional thin clay infills.								Is(50)=0.27 MPa	o	
11			100 (100)			Pale grey, trace iron staining, fine to medium grained, medium to coarse grained bands in parts.								Is(50)=0.92 MPa	x	
12														Is(50)=0.08 MPa	x	
13														Jt, 20°, PL, SR, C, thin CL coat, trace FeSt Is(50)=0.50 MPa Is(50)=0.39 MPa	x o	
14						Between 13.75 and 14.75m: Few Mudstone interbands up to 60mm thick.	SW							Jt, 10°, PL, SM, C thin CL coat CL seam, 10°, 5mm thick Jts, 10° PL, C, thin CL (0.5mm) infill Is(50)=0.46 MPa Is(50)=0.36 MPa	x o	
15			100 (97)											Jt, PL, SR, grey CL infill 2mm thick Jt, 10°, PL, SR, thin CL film, O Is(50)=0.44 MPa Is(50)=0.62 MPa	x o	
16														Jt, 10°, R, C, thin CL film Is(50)=0.82 MPa Is(50)=0.85 MPa	x o	
17	13.18		100											Mudstone band 20° Jt, 10°, PL, SM, thin carb bands. Is(50)=1.09 MPa Is(50)=1.65 MPa Jts, 10°, PL, C, thin CL film HW shale band, like very stiff clay Jt/Bd, 10°, Un, SR, CL film. Carb. Is(50)=0.64 MPa Is(50)=0.76 MPa	x o	
18						Borehole terminated at 17.22m										
19																
20																

REMARKS No groundwater reported during drilling. See Additional Descriptive Coding sheet for abbreviations.

LOGGED BY
JML

Project: **Ipswich Motorway / Logan Motorway Interchange**

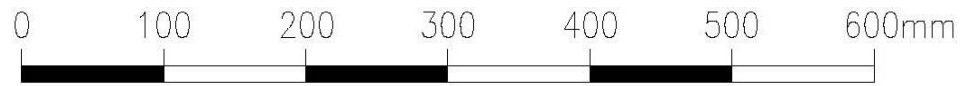
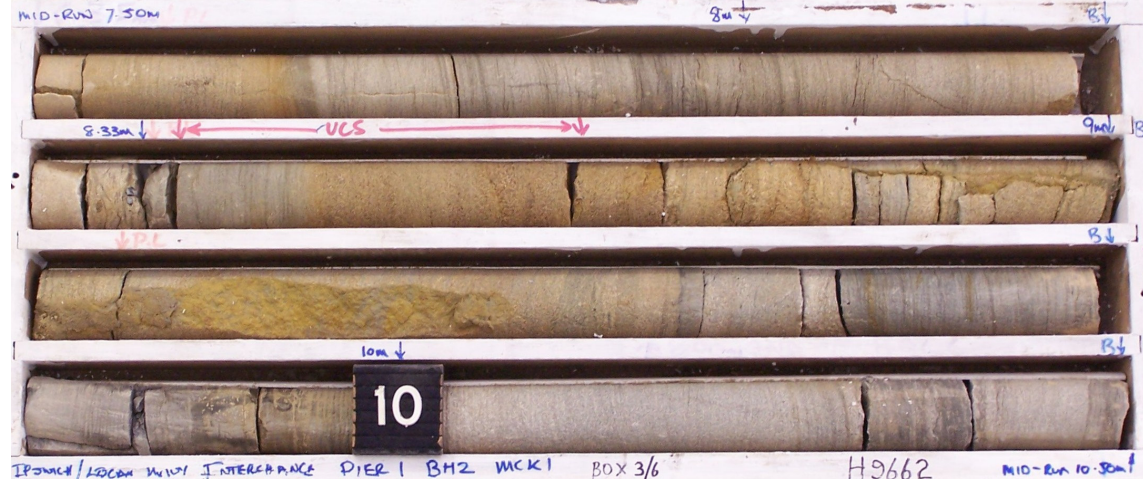
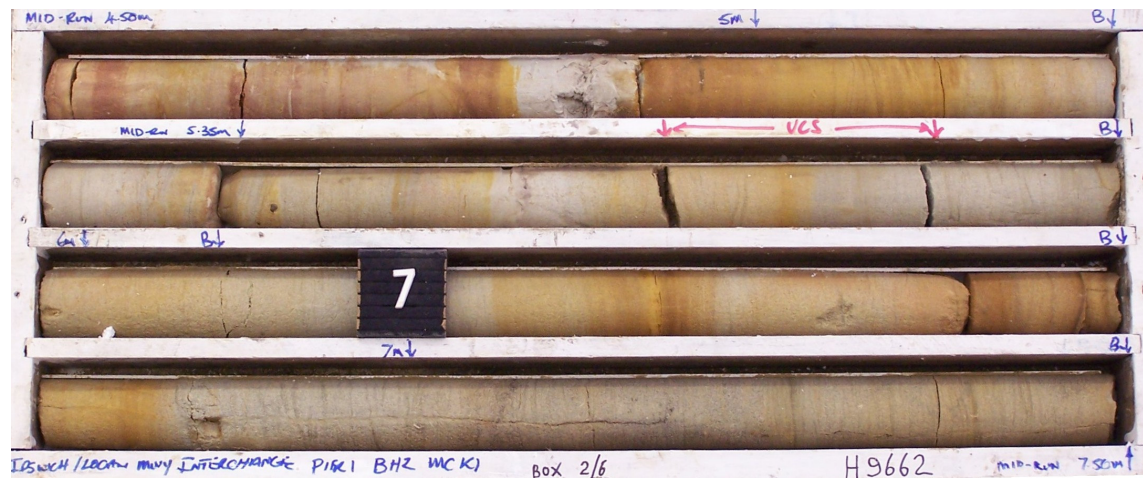
Borehole No: **BH2**

Start Depth: 1.50m

Finish Depth: 17.22m

Project No: FG5404

H No: 9662



SCALE 1:5

Project: **Ipswich Motorway / Logan Motorway Interchange**

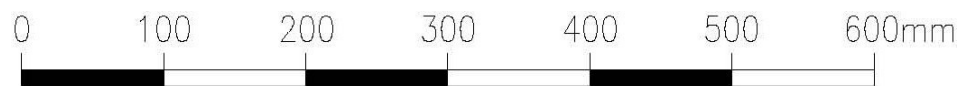
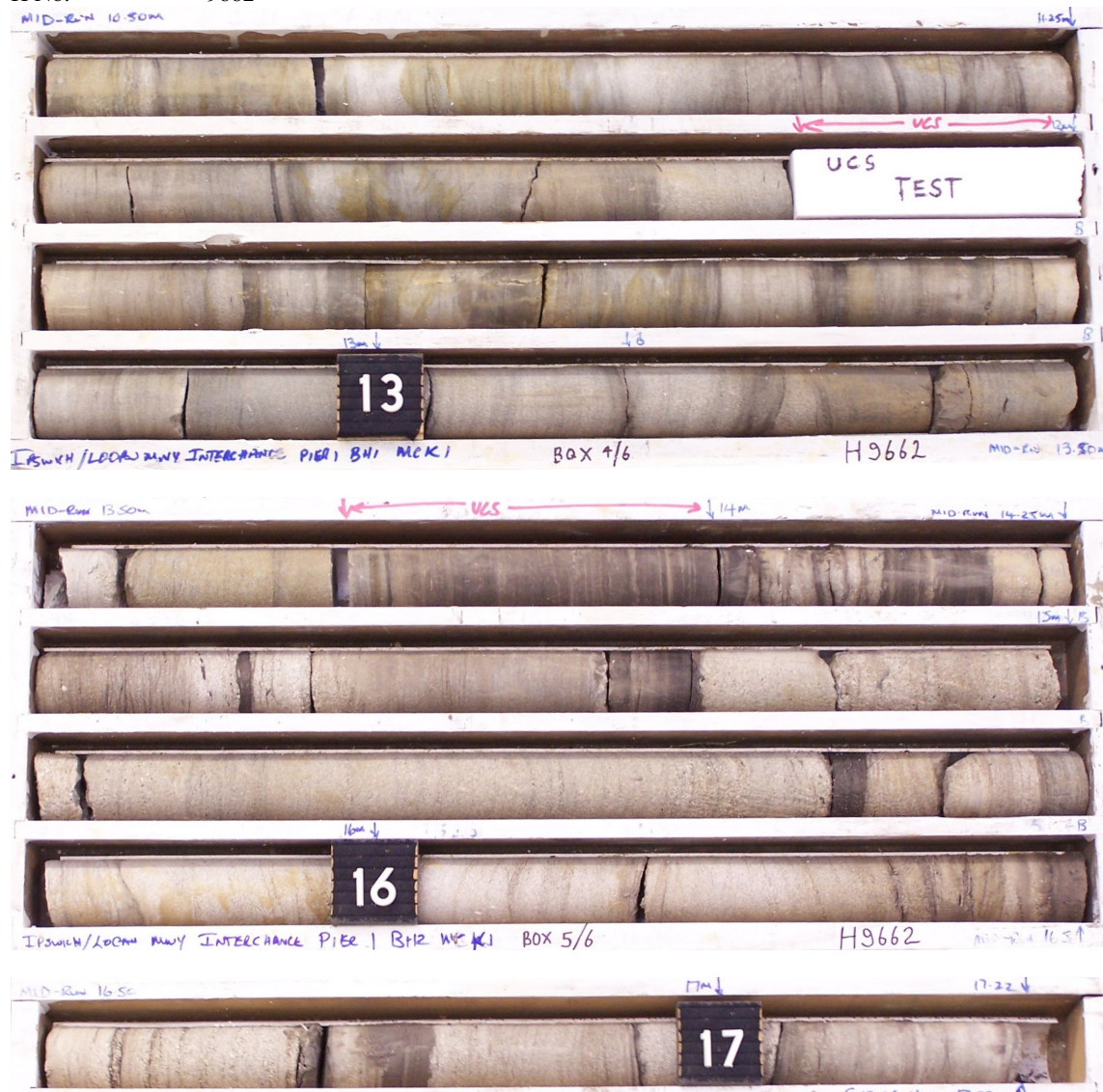
Borehole No: **BH2**

Start Depth: 1.50m

Finish Depth: 17.22m

Project No: FG5404

H No: 9662



SCALE 1:5