

## **COPYRIGHT NOTICE**

This geotechnical log and its associated data (the Document) is licensed by South Bank Corporation under the [Creative Commons Attribution 4.0 Licence](#) (CC BY 4.0). When reusing the Document, in whole or in part, please attribute as follows: "*(c) South Bank Corporation 2020, licensed under the CC BY 4.0 Licence, prepared by Arup*". This licence does not apply to logos or trademarks.

## **LIMITATION OF LIABILITY**

The CC BY 4.0 Licence contains a comprehensive Disclaimer of Warranties and Limitation of Liability. In addition, please note that this Document was prepared for South Bank Corporation use only. Reuse of the Document by anyone for any other purpose could result in error and/or loss. You should obtain professional advice before making decisions based on the contents of the Document.

When reproducing any part of this Document, you must also reproduce this limitation of liability notice in addition to the italicised attribution statement above.

Retrieved from the Queensland Geotechnical Database <http://qgd.org.au/>

This log has been contributed to the Queensland Geotechnical Database with the permission of Arup.

PROJECT Southbank Parklands Redevelopment

LOGGED BY PBF  
DATES 22/3/99

CONTRACTOR Daly Bros  
DRILL MODEL DB1000  
MOUNTING Tandem Drive Truck

ANGLE Vertical  
BEARING  
DIAMETER

GROUND LEVEL RL 4.9m  
EASTING 1147.97  
NORTHING 1040.67

DRILLING	STRATA		MATERIAL DESCRIPTION		CONDITION		OBSERVATION						
SAMPLE, TEST, BIT, SUPPORT, ETC.	R.L.	DEPTH	GROUP SYMBOL	LEGEND	SOIL TYPE Colour, Plasticity, Grain Size, Minor Components	CONSISTENCY		SOIL ORIGIN, STRUCTURE, ETC.					
	AHD	m				WATER / MOISTURE	COHESIVE		NON COHESIVE				
						VS	SL	ST	VL	JM	DM		
			CL		30mm Asphalt Roadway CLAY: Light grey mottled orange brown, low to medium plasticity								RESIDUAL
SPT @ 1.0 5/7/8 N=15		1.0											
		1.85			Sandy CLAY: Pale grey mottled orange brown, fine grained sand								
SPT @ 2.5 11/22/30 N=52		2.5			PHYLLITE: Pale grey and white, extremely weathered								XW PHYLLITE
		3.6			Material becoming harder								
SPT @ 4.0 30/90mm n=R		4.0			Start Coring at 4.1m								
		5											
		6											
		7											
		8											
		9											
		10											

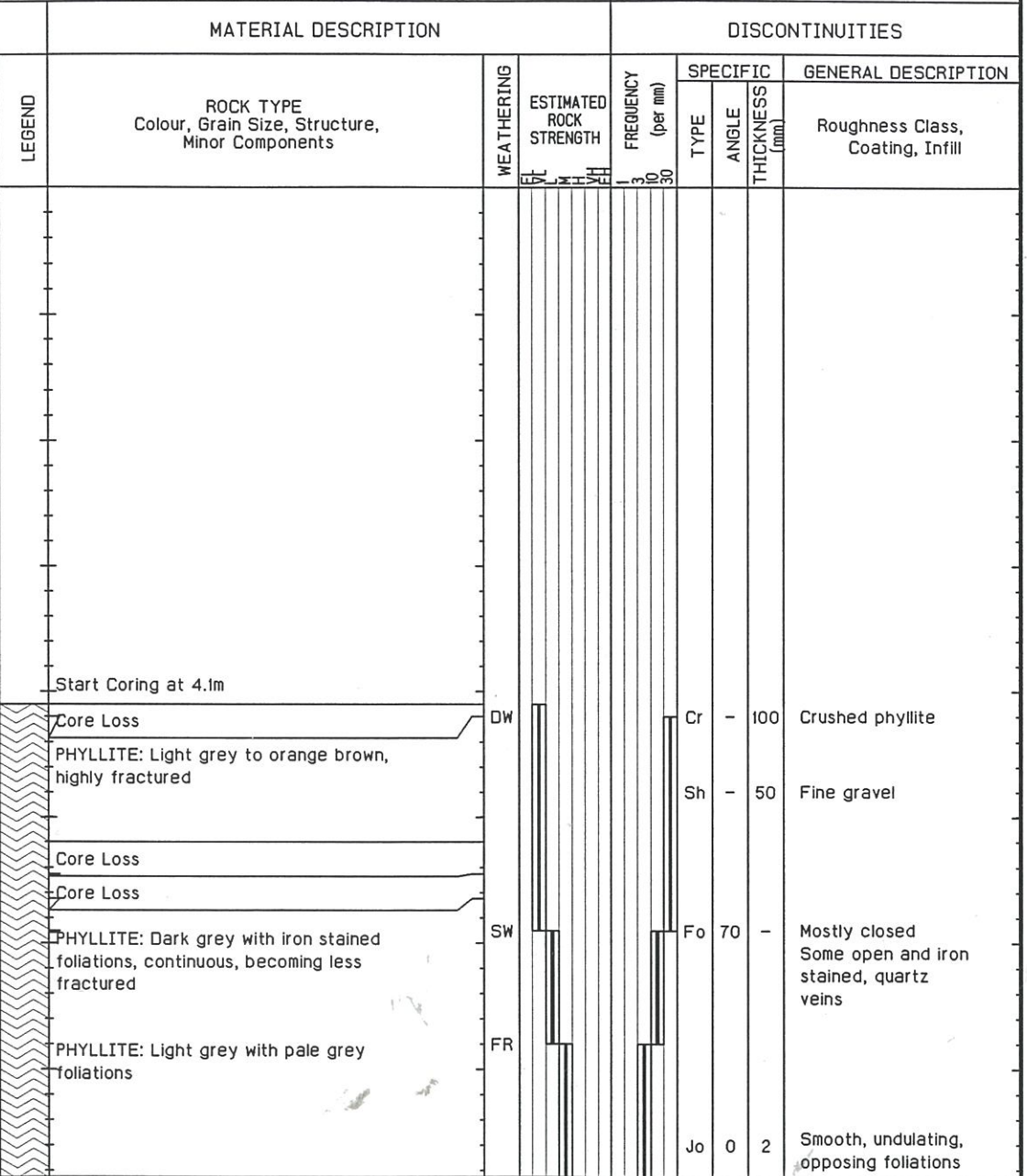
NOTES

JOB

**11257**

PROJECT	Southbank Parklands Redevelopment		LOGGED BY	PBF	
CONTRACTOR	Daly Bros	ANGLE	Vertical	GROUND LEVEL	RL 4.9m
DRILL MODEL	DB1000	BEARING		NORTHING	1040.67
MOUNTING	Tandem Drive Truck	DIAMETER	NMLC	EASTING	1147.97

DRILLING	STRATA		MATERIAL DESCRIPTION			DISCONTINUITIES						
RUN REC. (%)	WATER	SAMPLE TEST	R.L.	DEPTH	LEGEND	WEATHERING	ESTIMATED ROCK STRENGTH	FREQUENCY (per mm)	SPECIFIC	GENERAL DESCRIPTION		
			AHD	m					TYPE	ANGLE	THICKNESS (mm)	



Is (50) = 0.06  
 Is (50) = 0.28  
 Is (50) = 0.40  
 Is (50) = 1.60  
 Is (50) = 1.42  
 Is (50) = 1.03

NOTES	TYPE OF DISCONTINUITY	JOB
	Jo JOINT Be BEDDING PLANE PARTING Fo FOLIATION PARTING Cl CLAY SEAM We WEATHERED SEAM Cr CRUSHED SEAM Sh SHEARED ZONE	11257