

COPYRIGHT NOTICE

This geotechnical log and its associated data (the Document) is licensed by Insitu Geotech Services under the [Creative Commons Attribution 4.0 Licence](#) (CC BY 4.0). When reusing the Document, in whole or in part, please attribute Insitu Geotech Services as follows: "*(c) Insitu Geotech Services 2022, licensed under the CC BY 4.0 Licence*". This licence does not apply to logos or trademarks.

LIMITATION OF LIABILITY

The CC BY 4.0 Licence contains a comprehensive Disclaimer of Warranties and Limitation of Liability. In addition, please note that this Document was prepared for Insitu Geotech Services use only. Reuse of the Document by anyone for any other purpose could result in error and/or loss. You should obtain professional advice before making decisions based on the contents of the Document.

When reproducing any part of this Document, you must also reproduce this limitation of liability notice in addition to the italicised attribution statement above.

Retrieved from the Queensland Geotechnical Database <http://qgd.org.au/>

This log has been contributed to the Queensland Geotechnical Database with the permission of Insitu Geotech Services.

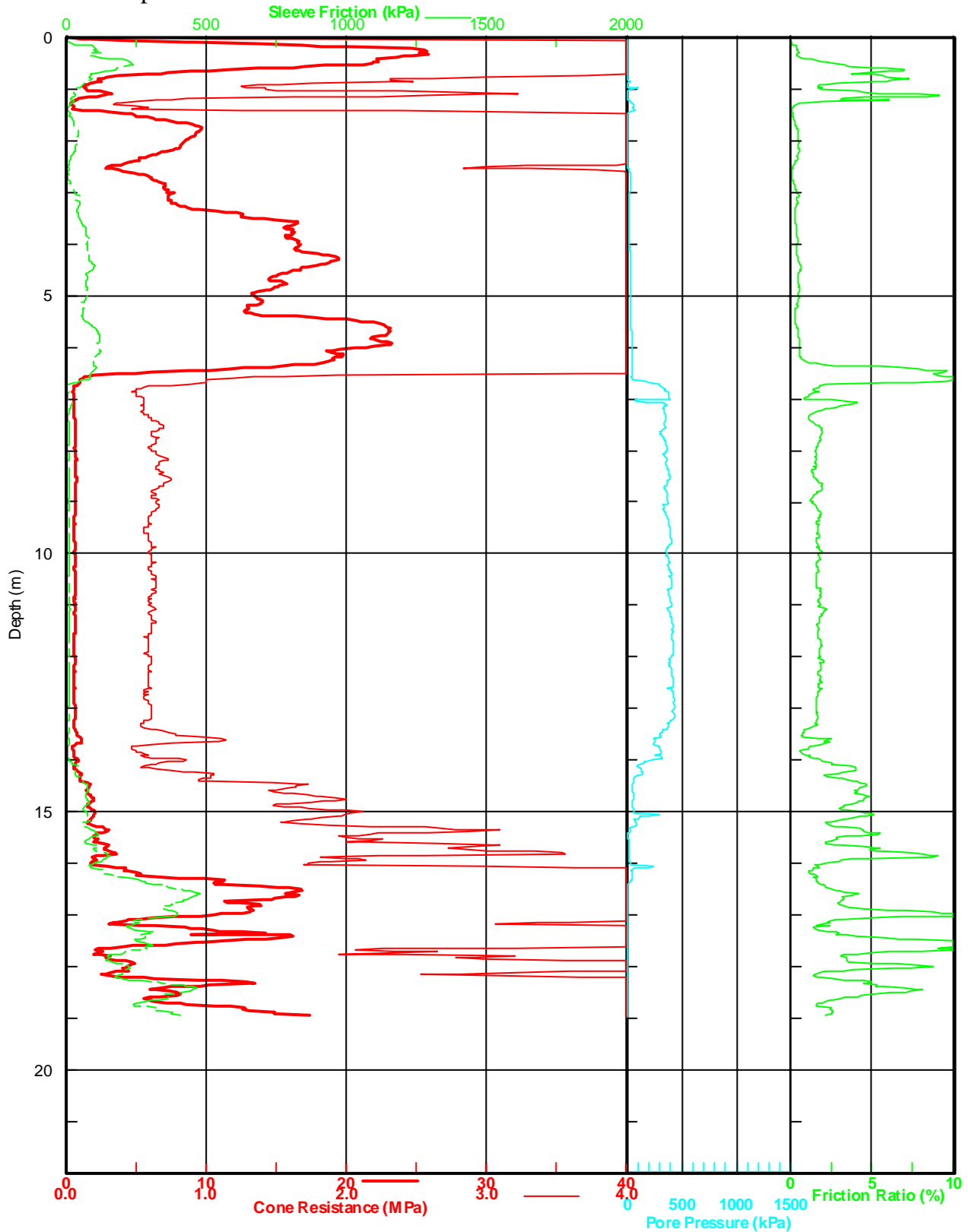
CONE PENETROMETER TEST RESULT

Client : McConnell Consulting
Project : Stockland Residential
Location : Bermuda St, Robina

Test No : **MC-R09-B**

DGPS Position : 56J 0541310, 6894504
Predrill Depth : 0.00m

R.L. : -
W.L. : -
S.P. : -



Tested By : SW Test Date : 18/06/2004
IGS No : 1638 Job No : 0406-16
Tested in accordance with AS 1289.6.5.1-1999.
Page No : 1 of 1

Insitu Geotech Services Pty. Ltd.

PO Box 2163 Fortitude Valley BC. QLD. 4008.

Approved Signatory : *William* Date : 18/06/2004

Ph: 0407 467 488 E-mail: igs@insitu.com.au
Fax: 0409 467 488 Website: www.insitu.com.au