

COPYRIGHT NOTICE

This geotechnical log and its associated data (the Document) is licensed by Arup under the [Creative Commons Attribution 4.0 Licence](#) (CC BY 4.0). When reusing the Document, in whole or in part, please attribute Arup and the author as follows: "*(c) Arup 2022, licensed under the CC BY 4.0 Licence, prepared by Insitu Geotech Services*". This licence does not apply to logos or trademarks.

LIMITATION OF LIABILITY

The CC BY 4.0 Licence contains a comprehensive Disclaimer of Warranties and Limitation of Liability. In addition, please note that this Document was prepared for Arup use only. Reuse of the Document by anyone for any other purpose could result in error and/or loss. You should obtain professional advice before making decisions based on the contents of the Document.

When reproducing any part of this Document, you must also reproduce this limitation of liability notice in addition to the italicised attribution statement above.

Retrieved from the Queensland Geotechnical Database <http://qgd.org.au/>

This log has been contributed to the Queensland Geotechnical Database with the permission of Insitu Geotech Services.

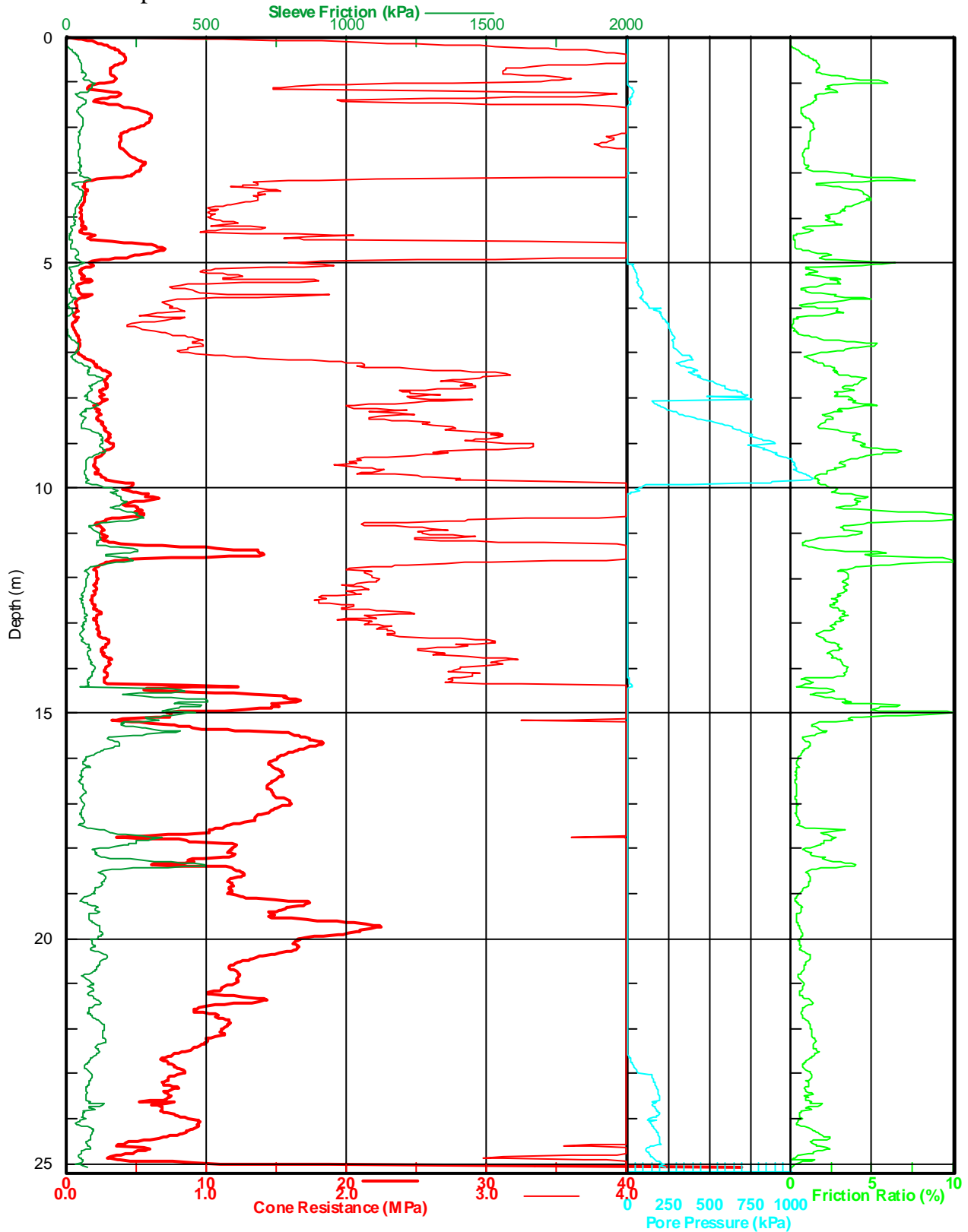
CONE PENETROMETER TEST RESULT

Client : ARUP
Project : Millenium Arts Project
Location : South Brisbane, Qld

Test No : CPTA4

DGPS Position : 56J 0501639, 6961222
 Predrill Depth : 0.00m

R.L. : +3 approx, as advised
 W.L. : -
 S.P. : -



Tested By : SW & TH **Test Date : 19/11/2004**
IGS No : 1958 **Job No : 0411-19**

Insitu Geotech Services Pty. Ltd.

Tested in accordance with AS 1289.6.5.1-1999.

PO Box 2163 Fortitude Valley BC. QLD. 4008.

Page No: 1 of 1

Ph: 0407 467 488
 Fax: 07 3254 4530

E-mail: igs@insitu.com.au
 Website: www.insitu.com.au

Approved Signatory : *William* Date : 19/11/2004