

COPYRIGHT NOTICE

This geotechnical log and its associated data (the Document) is licensed by the Queensland Department of Transport and Main Roads under the [Creative Commons Attribution 4.0 Licence](#) (CC BY 4.0). When reusing the Document, in whole or in part, please attribute the Department as follows: "*(c) State of Queensland (Department of Transport and Main Roads) 2020, licensed under the CC BY 4.0 Licence*". This licence does not apply to the Queensland Government logo or trademarks.

LIMITATION OF LIABILITY

The CC BY 4.0 Licence contains a comprehensive Disclaimer of Warranties and Limitation of Liability. In addition, please note that this Document was prepared for Departmental use only. Reuse of the Document by anyone for any other purpose could result in error and/or loss. You should obtain professional advice before making decisions based on the contents of the Document.

When reproducing any part of this Document, you must also reproduce this limitation of liability notice in addition to the italicised attribution statement above.

Retrieved from the Queensland Geotechnical Database <http://qgd.org.au/>



**Queensland
Government**

Department of
Main Roads

TEST PIT LOG

FOR GEOTECHNICAL TERMS AND
SYMBOLS REFER FORM F:GEOT 017/5-2009

FEATURE No TP057

SHEET 1 of 1

DATE EXCAVATED 04/08/07

PROJECT Bruce Highway Cooroy to Curra Section A Geotechnical Investigation

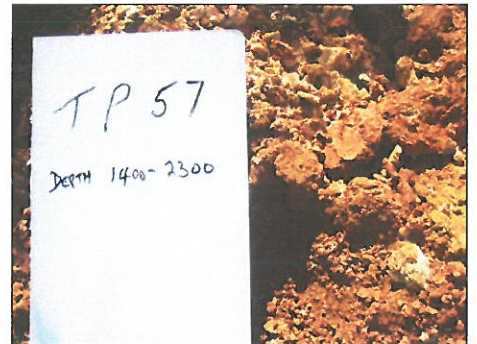
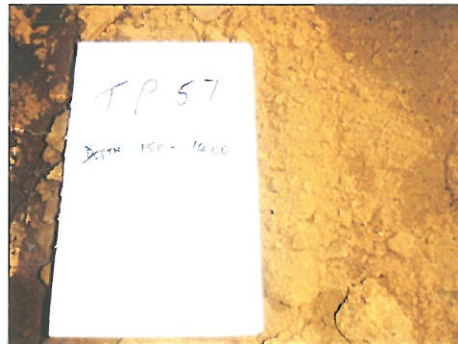
LOCATION Embankment 16 COORDINATES 483083.1 E; 7081046.2 N

PROJECT No FG5825 SURFACE R.L. 105.95 DATUM AHD SYSTEM MGA94

JOB No 128/10A/901 EQUIPMENT TYPE AND MODEL JCB BACKHOE BUCKET SIZE 450mm

DEPTH (m)	R.L. (m)	METHOD	USC WEATHERING	SOIL DESCRIPTION	VDCP LOG (Cone Resistance)	ADDITIONAL DATA AND TEST RESULTS	SAMPLE NUMBER	TEST REPORT
				ROCK DESCRIPTION	VDCP 35 (MPa)			
0	105.95	BUCKET		SOIL TYPE : Colour, grain size, plasticity or particle characteristics, moisture, consistency, density, secondary components	0 4 8 12 16>20			
0	105.95			Topsoil; Silty CLAY , brown, with small rock to 9.5mm. Dry, hard.				
0	105.80			SILT with some sand Yellowish brown, high plasticity. Sand - coarse, angular quartz. Moist, hard.		Traces of Organics LL = 56; PI = 22; LS = 11.2; MC = 25%; WPI 1752	09G1258	22049
1			MH					
1	104.55			Gravelly SILT (Colluvial) Mottled red/yellow, high plasticity. Gravel - angular, low strength, Fe stained and cemented. Moist, very stiff to hard.		PP(UCS) >400kPa MC = 24.3%	09G1259	
2			(MH)					
2	103.65			Gravelly SILT (Residual soil) Mottled red/orange/light grey, high plasticity. Gravel - angular, medium to coarse grained, quartz with polished surfaces, and very low to medium strength. Fe stained and cemented particles. Moist, very stiff. rock fabric visible in parts at base of pit.		PP(UCS) 350kPa MC = 23.3%; Rock fabric visible at base of pit. PP(UCS) 330kPa	09G1260	
3	103.25		(MH)					
3				Excavation terminated at 2.7m				
4	101.95							

OLD_DMR_LIB_01_GLB_Log_A_TEST PIT LOG FG5825 BRUCE HWY COOROY-CURRA SECTION A.TPS.GPJ_DWG64067.GDW_Datgel CPT Tool.gnl Add.in 24/06/2010 17:40



REMARKS Parantheses indicate visual classification only. PP = Pocket penetrometer

LOGGED BY
RK/GB P.Simson