

## **COPYRIGHT NOTICE**

This geotechnical log and its associated data (the Document) is licensed by the Queensland Department of Transport and Main Roads under the [Creative Commons Attribution 4.0 Licence](#) (CC BY 4.0). When reusing the Document, in whole or in part, please attribute the Department and author as follows: "*(c) State of Queensland (Department of Transport and Main Roads) 2023, licensed under the CC BY 4.0 Licence, prepared by ENGEO*". This licence does not apply to logos or trademarks.

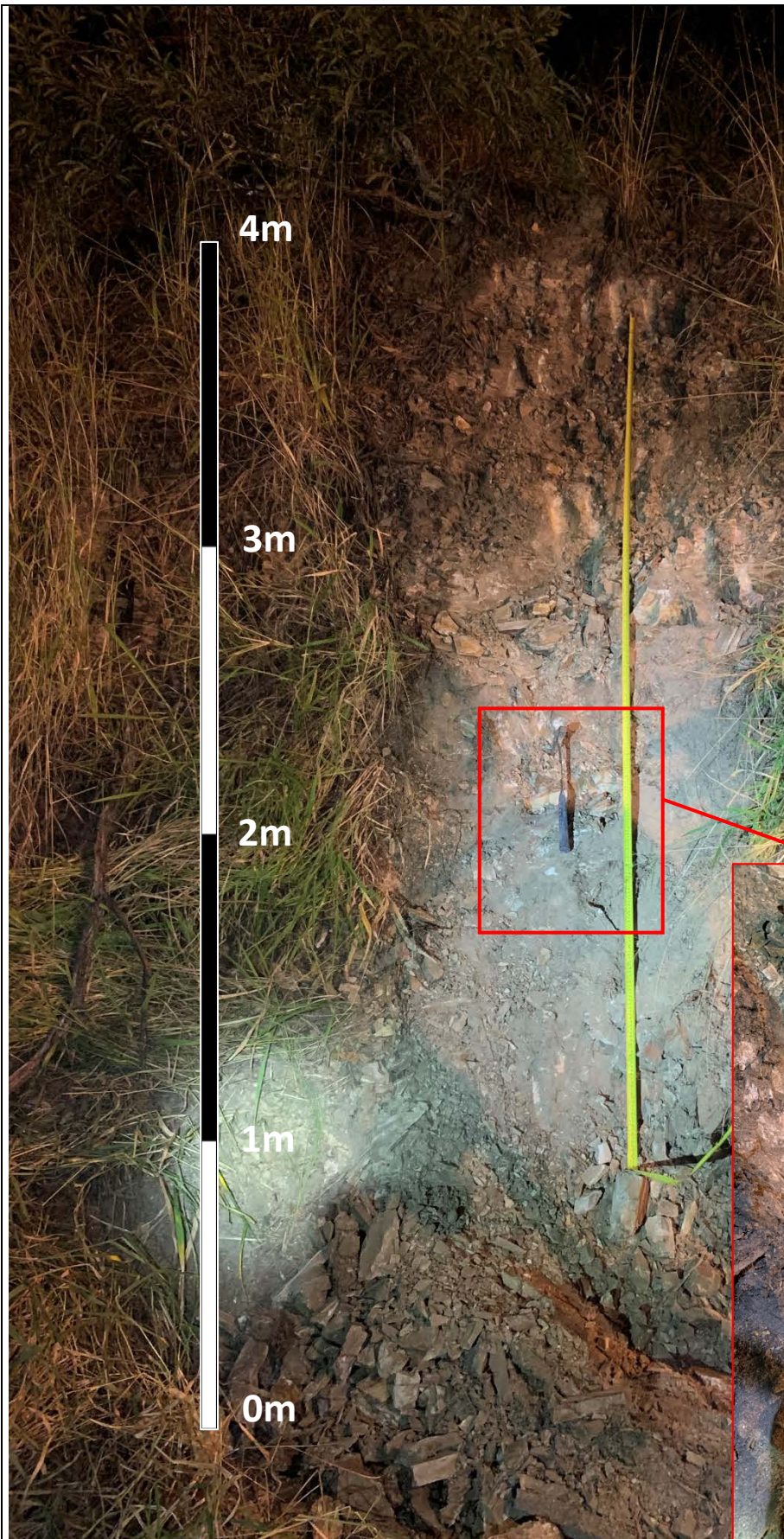
## **LIMITATION OF LIABILITY**

The CC BY 4.0 Licence contains a comprehensive Disclaimer of Warranties and Limitation of Liability. In addition, please note that this Document was prepared for Departmental use only. Reuse of the Document by anyone for any other purpose could result in error and/or loss. You should obtain professional advice before making decisions based on the contents of the Document.

When reproducing any part of this Document, you must also reproduce this limitation of liability notice in addition to the italicised attribution statement above.

Retrieved from the Queensland Geotechnical Database <http://ggd.org.au/>

This log has been contributed to the Queensland Geotechnical Database with the permission of ENGEO.



**3-4m ARGILLITE (Dcf) HW:**


Pale brown grey mottled orange, fine grained, foliated, very low to low strength. GSI = 40

**0-3m ARGILLITE (Dcf) DW:**

Pale brown grey mottled orange, fine grained, foliated, low to medium strength, GSI = 30

- Js: 45/236 Sm, TI or OP, Pln, Fe Stn or soil FL, close to medium spaced, 0.3m – 0.5m
- Js: 88/332 Sm, TI or OP, Pln, Fe Stn or soil FL, close to medium spaced, 0.3m – 0.5m
- Fp: 54/080 Sm, TI or OP, Pln, Fe Stn or soil, laminated



	<p>Title: S-TP04 Cutting Observation and log</p>	Client: Aussie Hydrovac Services	
		Project: Beaudesert-Beenleigh road upgrade 18840.000.001	Date: 17/06/2021 Drawn: RC Checked: JA Easting: 519107.86 Northing: 6933276.03