

COPYRIGHT NOTICE

This geotechnical log and its associated data (the Document) is licensed by the Queensland Department of Transport and Main Roads under the [Creative Commons Attribution 4.0 Licence](#) (CC BY 4.0). When reusing the Document, in whole or in part, please attribute the Department as follows: "*(c) State of Queensland (Department of Transport and Main Roads) 2020, licensed under the CC BY 4.0 Licence*". This licence does not apply to the Queensland Government logo or trademarks.

LIMITATION OF LIABILITY

The CC BY 4.0 Licence contains a comprehensive Disclaimer of Warranties and Limitation of Liability. In addition, please note that this Document was prepared for Departmental use only. Reuse of the Document by anyone for any other purpose could result in error and/or loss. You should obtain professional advice before making decisions based on the contents of the Document.

When reproducing any part of this Document, you must also reproduce this limitation of liability notice in addition to the italicised attribution statement above.

Retrieved from the Queensland Geotechnical Database <http://qgd.org.au/>

ENGINEERING BOREHOLE LOG

FOR GEOTECHNICAL TERMS AND
SYMBOLS REFER FORM F:GEOT 017/6-2010

BOREHOLE No BH C62
SHEET 2 of 2
REFERENCE No H11144

PROJECT Bruce Highway Upgrade (Cooroy to Curra) Section C
LOCATION Cut 16 COORDINATES 470474.6 E; 7097762.8 N
PROJECT No FG5799 SURFACE R.L. 76.70m PLUNGE _____ DATE STARTED 16/08/11 GRID DATUM MGA94
JOB No 232/10A/2 HEIGHT DATUM AHD BEARING _____ DATE COMPLETED 16/08/11 DRILLER Drillsure Pty Ltd

DEPTH (m)	R.L. (m)	AUGER WASH BORING CORE DRILLING	RQD (%)	SAMPLE	MATERIAL DESCRIPTION	LITHOLOGY	USC	WEATHERING	INTACT STRENGTH	DEFECT SPACING (mm)	GRAPHIC LOG	ADDITIONAL DATA AND TEST RESULTS	SAMPLES TESTS
10	66.70												
10	66.67		(0)		SANDSTONE (MW): Grey/brown, fine grained, massive, medium to high strength, indurated and/or slightly metamorphosed.							BZ, BP BZ, DI? J, 50°, Pl, T, S, FeSt	
11			100 (18)		Defects: -Broken Zones up to 300mm. -Joint at 40° (2-3/m) -Joint at 60° (2/m)							BZ, DI? J, 50°, Pl, T, S, FeSt J, 60°, Pl, T, CInf J, 70°, Pl, T, S, FeSt	x o
12					Defect spacing is close to medium. Defect surfaces are planar, tight, smooth, thinly clay infilled, iron stained. Prominent siltstone interbeds.	MW						Is(50) = 1.64MPa Is(50) = 1.53MPa	
13			100 (31)									Is(50) = 2.56MPa	x
14	62.70		100 (60)									Is(50) = 0.61MPa	x
14			100 (94)		SANDSTONE (SW): Grey, medium to coarse grained, massive, high to very high strength, indurated and/or slightly metamorphosed.							BZ J, 40°, Pl, O, CInf, 2mm BZ, DI?	
15					Defects: -Joint at 40° (2-3/m) -Joint at 60° (1-2/m)							Is(50) = 1.13MPa Is(50) = 4.52MPa	x o
16			100 (87)		Defect spacing is mainly wide. Defect surfaces are planar, open, slightly rough to rough, iron stained. Particles up to 50mm throughout.	SW						J*2, 40°, Pl, O, SR, FeSt Is(50) = 2.14MPa Is(50) = 7.17MPa	x o
17												J, 40°, Pl, O, R, FeSt Is(50) = 3.69MPa Is(50) = 2.69MPa	x o
17	59.00		100									DD = 2.62t/m ³ ; MC = 0.6%; J, 70°, Pl, O, R, FeSt UCS=21.49MPa	UCS
18					Borehole terminated at 17.7m								
19													
20													

REMARKS _____

LOGGED BY
JA/DC

CORE PHOTO LOG - BH C62

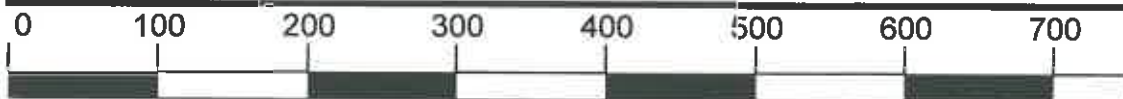
Project Name:	BRUCE HIGHWAY UPGRADE - SECTION C		
Project No.:	FG5799	Date:	08/09/2011
Details:	Cut 16	Start Depth (m):	3.00
Reference No.:	H11144	Finish Depth (m):	17.70



SCALE 1:5

CORE PHOTO LOG - BH C62

Project Name:	BRUCE HIGHWAY UPGRADE - SECTION C		
Project No.:	FG5799	Date:	08/09/2011
Details:	Cut 16	Start Depth (m):	3.00
Reference No.:	H11144	Finish Depth (m):	17.70



SCALE 1:5

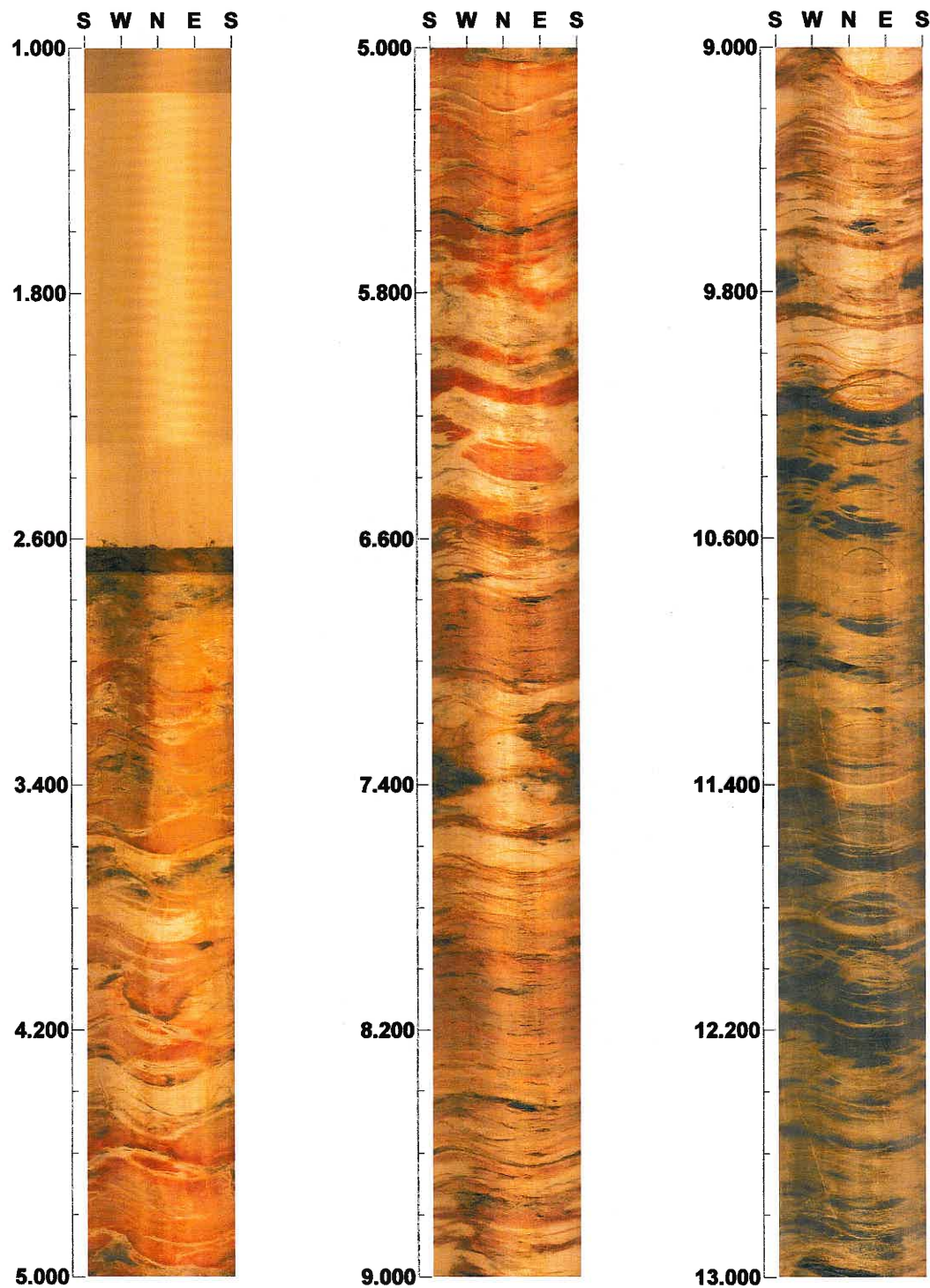
Project name: BRUCE HIGHWAY UPGRADE SECTION C

Bore hole No.: C-62

Azimuth: 0

Inclination: -90

Depth range: 1.000 - 13.000 m



Scale: 1/20

Aspect ratio: 200 %

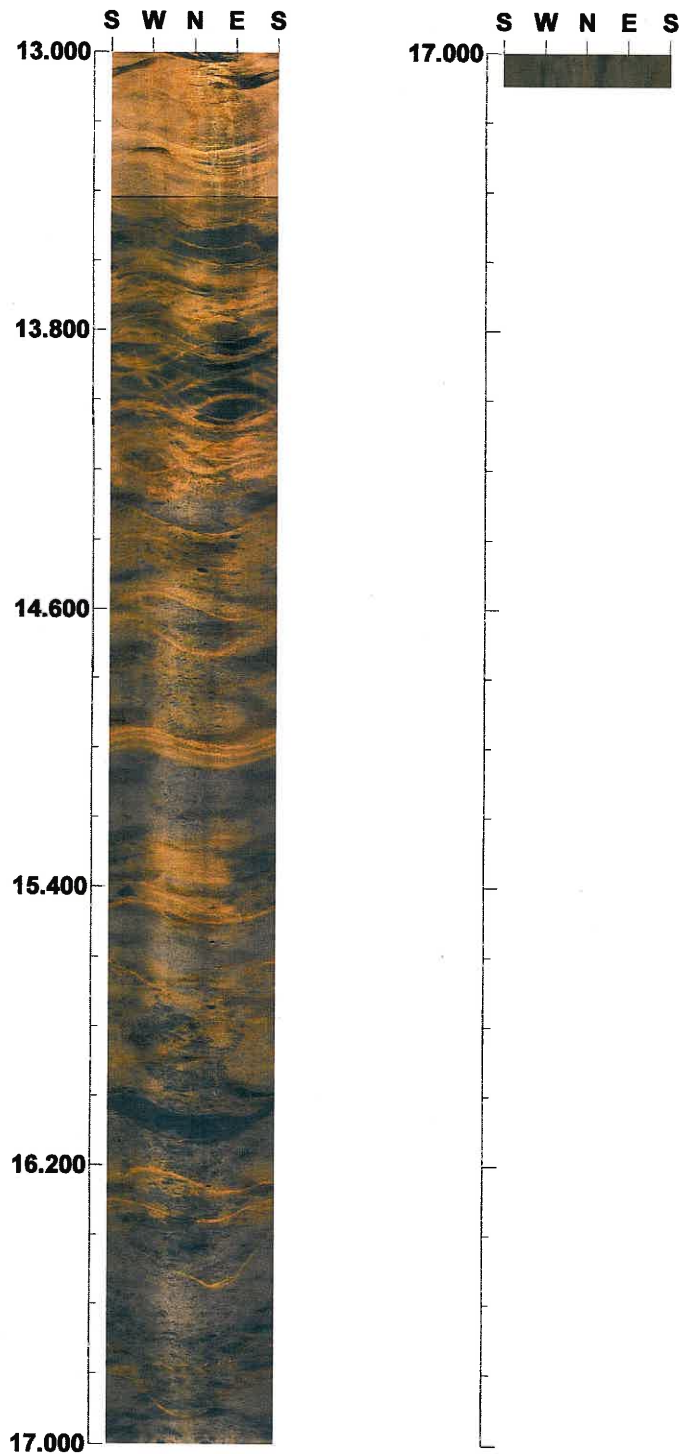
Project name: BRUCE HIGHWAY UPGRADE SECTION C

Bore hole No.: C-62

Azimuth: 0

Inclination: -90

Depth range: 13.000 - 17.093 m



Scale: 1/20 Aspect ratio: 200 %

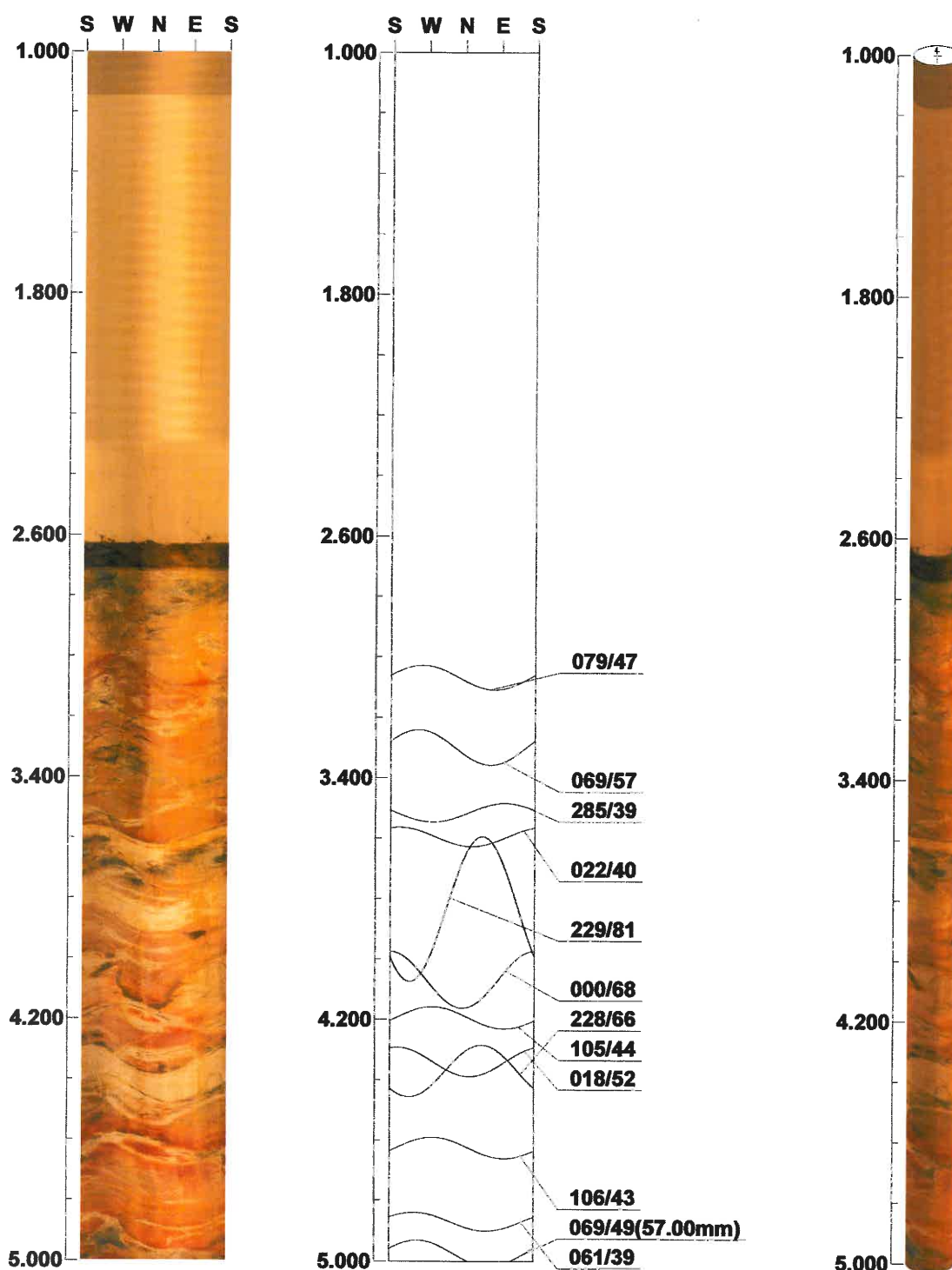
Project name: BRUCE HIGHWAY UPGRADE SECTION C

Bore hole No.: C-62

Azimuth: 0

Inclination: -90

Depth range: 1.000 - 5.000 m



Scale: 1/20

Aspect ratio: 200 %

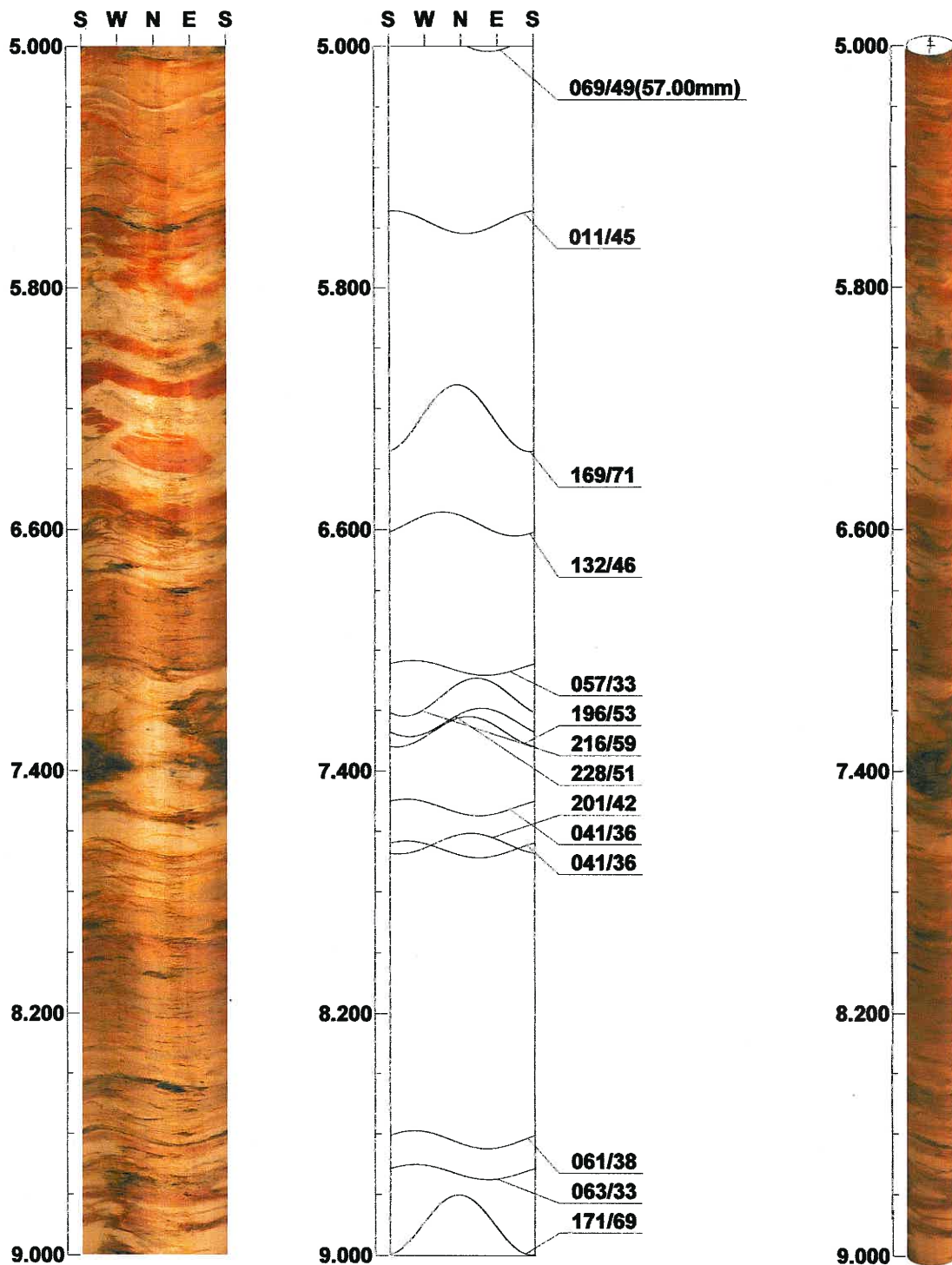
Project name: BRUCE HIGHWAY UPGRADE SECTION C

Bore hole No.: C-62

Azimuth: 0

Inclination: -90

Depth range: 5.000 - 9.000 m



Scale: 1/20

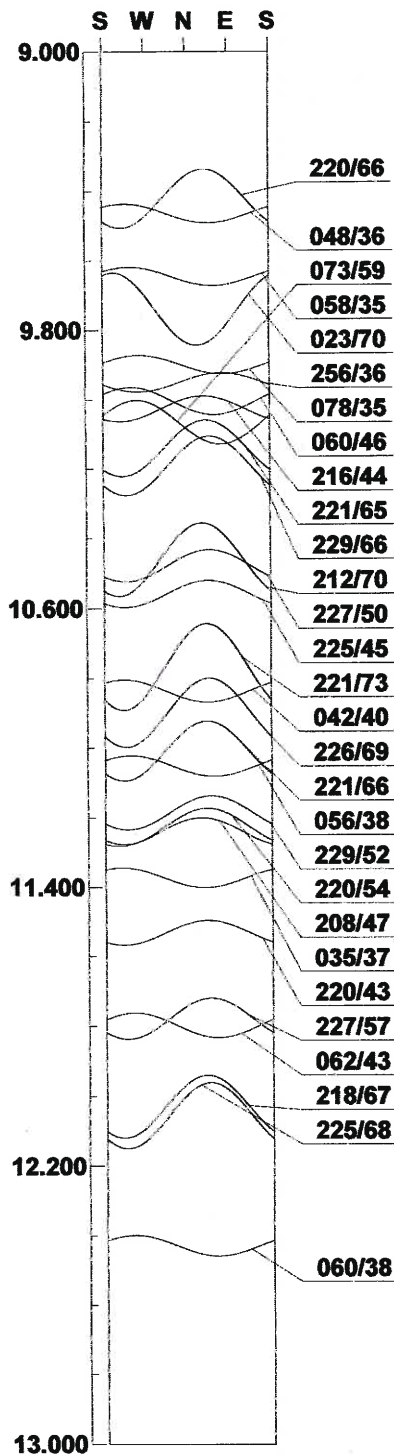
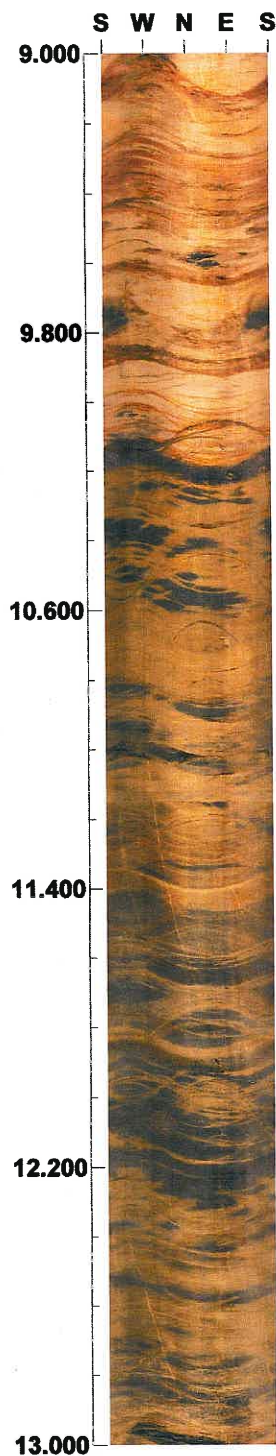
Aspect ratio: 200 %

Project name: BRUCE HIGHWAY UPGRADE SECTION C
Bore hole No.: C-62

Azimuth: 0

Inclination: -90

Depth range: 9.000 - 13.000 m



Scale: 1/20

Aspect ratio: 200 %

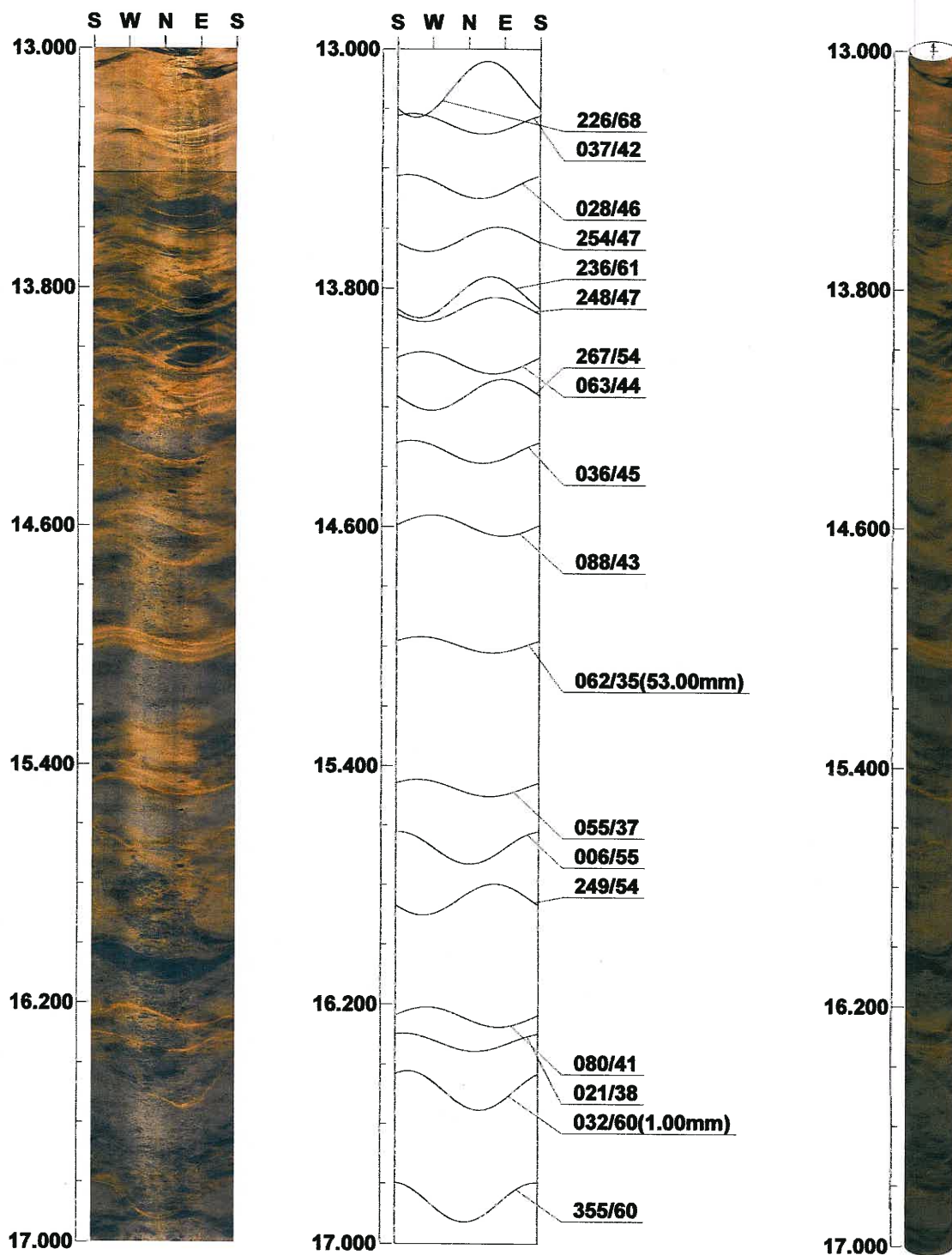
Project name: BRUCE HIGHWAY UPGRADE SECTION C

Bore hole No.: C-62

Azimuth: 0

Inclination: -90

Depth range: 13.000 - 17.000 m



Scale: 1/20

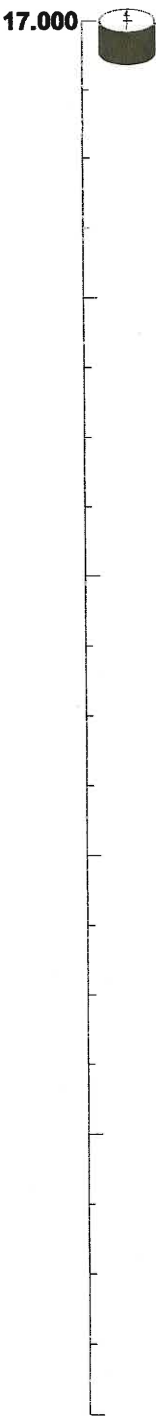
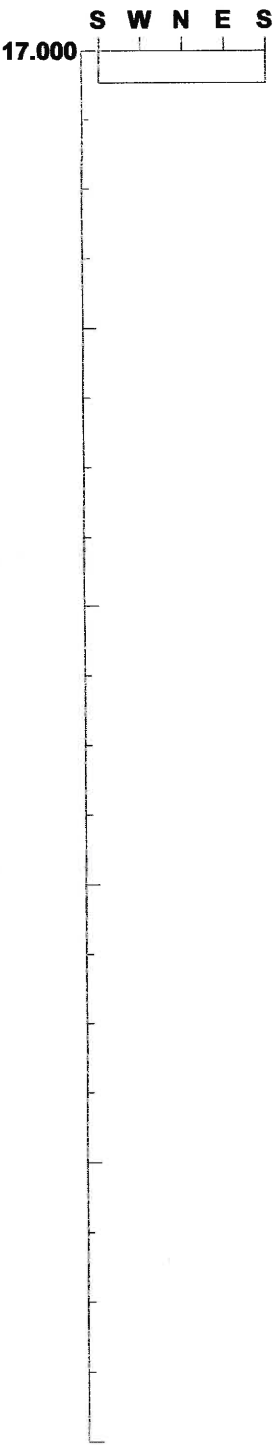
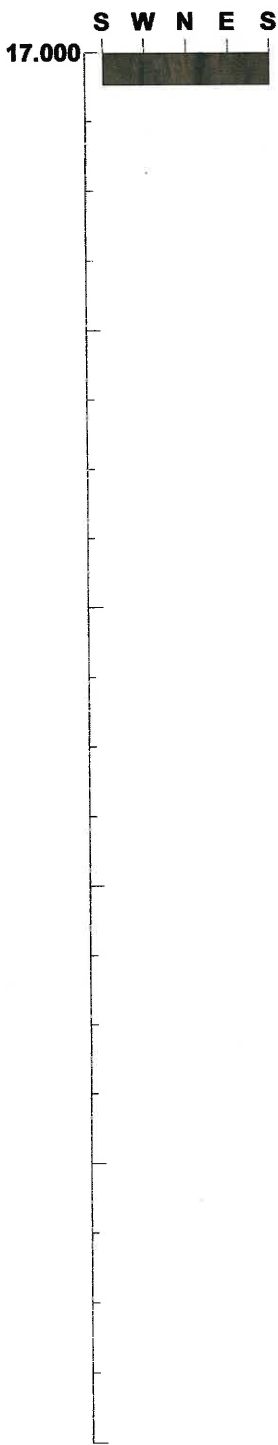
Aspect ratio: 200 %

Project name: BRUCE HIGHWAY UPGRADE SECTION C
Bore hole No.: C-62

Azimuth: 0

Inclination: -90

Depth range: 17.000 - 17.093 m



Scale: 1/20 Aspect ratio: 200 %

Tab. Table of Discontinuity (1 / 2)

File name: C-62.STR
[]

No.	Depth (m)	Dir/Dip	Sort	Aperture (mm)	Form	Condition	Remark
1	3.068	079/47	Parting	0.3	Planar	Smooth	Open
2	3.299	069/57	Parting	0.5	Planar	Smooth	Open
3	3.515	285/39	Joint	0.5	Planar	Rough	Open
4	3.595	022/40	Foliation	0.0	Planar	Smooth	Tight
5	3.834	229/81	Joint	0.5	Undulating	Rough	Open
6	4.068	000/68	Fault	0.5	Undulating	Rough	Open
7	4.194	105/44	ShearZone	13.0	Planar	Brec/crus'd	Open
8	4.340	018/52	Foliation	0.0	Planar	Smooth	Tight
9	4.370	228/66	Joint	0.3	Planar	Smooth	Tight
10	4.625	106/43	ShearZone	15.0	Planar	Brec/crus'd	Open
11	4.869	061/39	ShearZone	11.0	Planar	Brec/crus'd	Open
12	4.974	069/49	ShearZone	57.0	Planar	Brec/crus'd	Open
13	5.581	011/45	ShearZone	12.0	Planar	Brec/crus'd	Open
14	6.232	169/71	Joint	0.3	Planar	Rough	Tight
15	6.581	132/46	Joint	0.3	Undulating	Smooth	Open
16	7.058	057/33	ShearZone	17.0	Planar	Brec/crus'd	Open/loose
17	7.155	216/59	Joint	0.3	Planar	Smooth	Open
18	7.239	228/51	Joint	0.3	Planar	Smooth	Open
19	7.270	196/53	Joint	0.3	Planar	Smooth	Open
20	7.520	041/36	Parting	0.5	Planar	Smooth	Open
21	7.640	201/42	Joint	0.3	Planar	Smooth	Open
22	7.659	041/36	Parting	0.5	Planar	Smooth	Open
23	8.619	061/38	ShearZone	8.0	Planar	Brec/crus'd	Open
24	8.725	063/33	ShearZone	15.0	Planar	Brec/crus'd	Open
25	8.899	171/69	Joint	0.3	Planar	Rough	Tight
26	9.421	220/66	Joint	0.3	Planar	Rough	Tight
27	9.464	048/36	Parting	0.3	Planar	Smooth	Open
28	9.645	058/35	Foliation	0.0	Planar	Smooth	Tight
29	9.739	023/70	Joint	0.3	Undulating	Rough	Open
30	9.899	078/35	Foliation	0.0	Planar	Smooth	Tight
31	9.950	256/36	Joint	0.3	Planar	Smooth	Tight
32	10.004	080/46	Parting	0.5	Planar	Smooth	Open
33	10.026	216/44	Joint	0.3	Planar	Smooth	Tight
34	10.065	073/59	Joint	0.3	Planar	Smooth	Open
35	10.140	221/65	Joint	0.3	Planar	Smooth	Tight
36	10.191	229/66	Joint	0.3	Planar	Smooth	Tight
37	10.460	212/70	Joint	0.5	Planar	Smooth	Open
38	10.478	227/50	Joint	0.5	Planar	Smooth	Open
39	10.558	225/45	Joint	0.3	Planar	Smooth	Tight
40	10.767	221/73	Joint	0.5	Undulating	Smooth	Open
41	10.836	042/40	ShearZone	17.0	Planar	Brec/crus'd	Open
42	10.898	226/69	Joint	0.3	Planar	Smooth	Tight
43	11.008	221/66	Joint	0.3	Planar	Smooth	Tight
44	11.051	056/38	Parting	0.5	Planar	Smooth	Open
45	11.185	229/52	Joint	0.3	Planar	Smooth	Open
46	11.224	220/54	Joint	0.3	Planar	Smooth	Open
47	11.240	208/47	Joint	0.3	Planar	Smooth	Open
48	11.372	035/37	Foliation	0.0	Planar	Smooth	Tight
49	11.531	220/43	Joint	0.3	Planar	Smooth	Tight
50	11.778	227/57	Joint	0.3	Planar	Smooth	Open

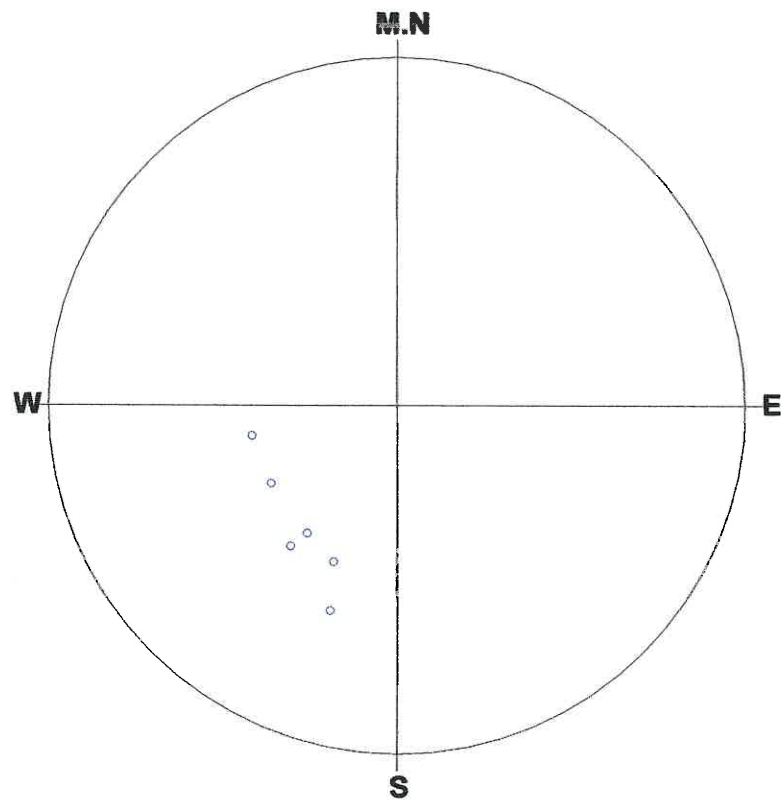
Tab. Table of Discontinuity (2 / 2)

File name: C-62.STR
[]

No.	Depth (m)	Dir/Dip	Sort	Aperture (mm)	Form	Condition	Remark
51	11.797	062/43	Joint	0.3	Planar	Smooth	Open
52	12.029	218/67	Joint	0.3	Planar	Smooth	Tight
53	12.055	225/68	Joint	0.3	Planar	Smooth	Tight
54	12.428	060/38	Parting	0.5	Planar	Smooth	Open
55	13.135	226/68	Joint	0.3	Planar	Smooth	Tight
56	13.251	037/42	Foliation	0.0	Planar	Smooth	Tight
57	13.462	028/46	Parting	0.3	Planar	Smooth	Tight
58	13.637	254/47	Joint	0.3	Planar	Smooth	Tight
59	13.830	236/61	Joint	0.3	Planar	Smooth	Tight
60	13.871	248/47	Joint	1.0	Planar	Smooth	Tight/fil'd
61	14.050	063/44	ShearZone	18.0	Planar	Brec/crus'd	Open
62	14.158	267/54	Joint	0.5	Planar	Smooth	Open
63	14.349	036/45	Parting	0.5	Planar	Smooth	Open
64	14.596	088/43	Parting	5.0	Planar	Smooth	Open
65	14.994	062/35	Parting	53.0	Planar	Brec/crus'd	Open
66	15.474	055/37	Parting	5.0	Planar	Smooth	Open
67	15.676	006/55	Joint	0.3	Planar	Rough	Open
68	15.849	249/54	Joint	1.0	Planar	Smooth	Tight/fil'd
69	16.242	080/41	Joint	4.0	Planar	Rough	Open
70	16.326	021/38	Joint	4.0	Planar	Smooth	Open
71	16.487	032/60	Joint	1.0	Planar	Rough	Open
72	16.862	355/60	Joint	1.0	Planar	Rough	Open

C-62.STR

<<FOLIATION>>



Number of Data : 6/72

<Legend>

○:Foliation	--	6	+ :Mineralban-	0
◇:Joint	--	0		
□:Parting	--	0		
△:Fault	--	0		
▽:ShearZone-	--	0		
×:Vein	--	0		

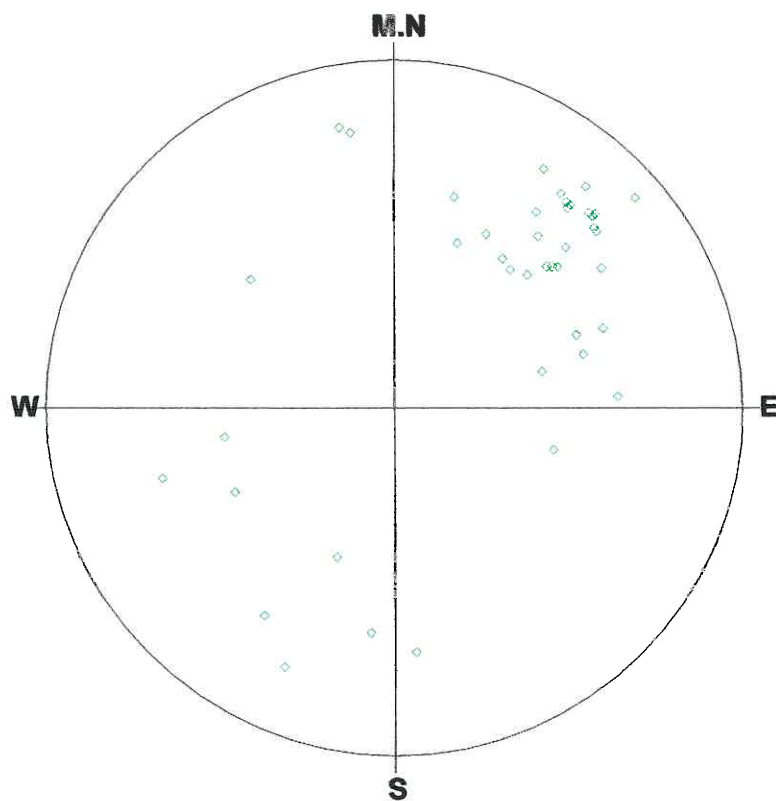
Schmidt (L.H)

Depth : 3.068 - 16.862 m

Aperture : 0.0 - 57.0 mm

C-62.STR

<<JOINT>>



Number of Data : 42/72

<Legend>

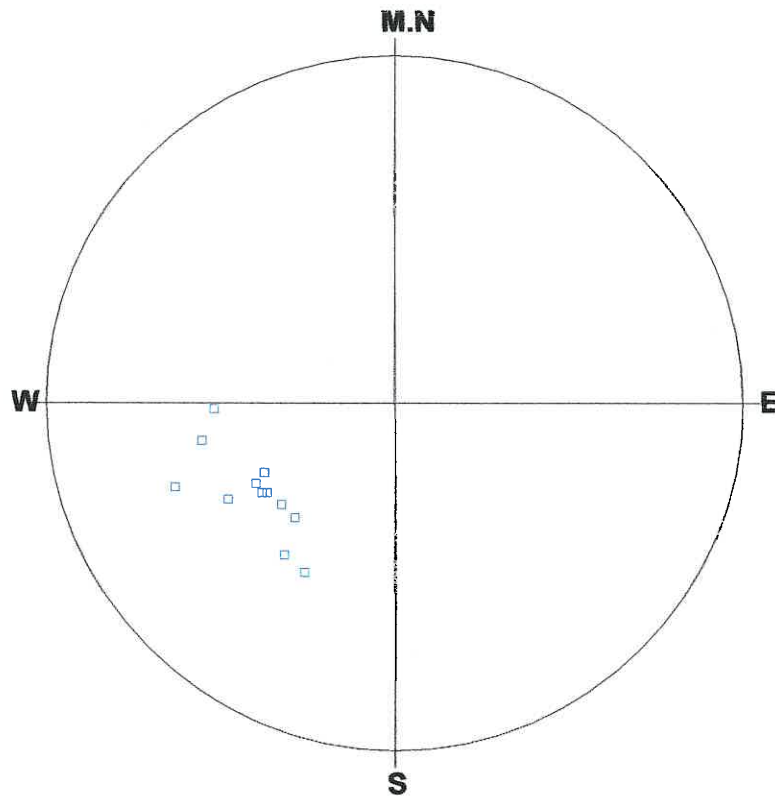
○:Foliation	--	0	+:Mineralban-	0
◇:Joint	--	42		
□:Parting	--	0		
△:Fault	--	0		
▽:ShearZone	--	0		
×:Vein	--	0		

Schmidt (L.H)

Depth : 3.068 - 16.862 m

Aperture : 0.0 - 57.0 mm

C-62.STR
<<PARTING>>



Number of Data : 13/72

<Legend>

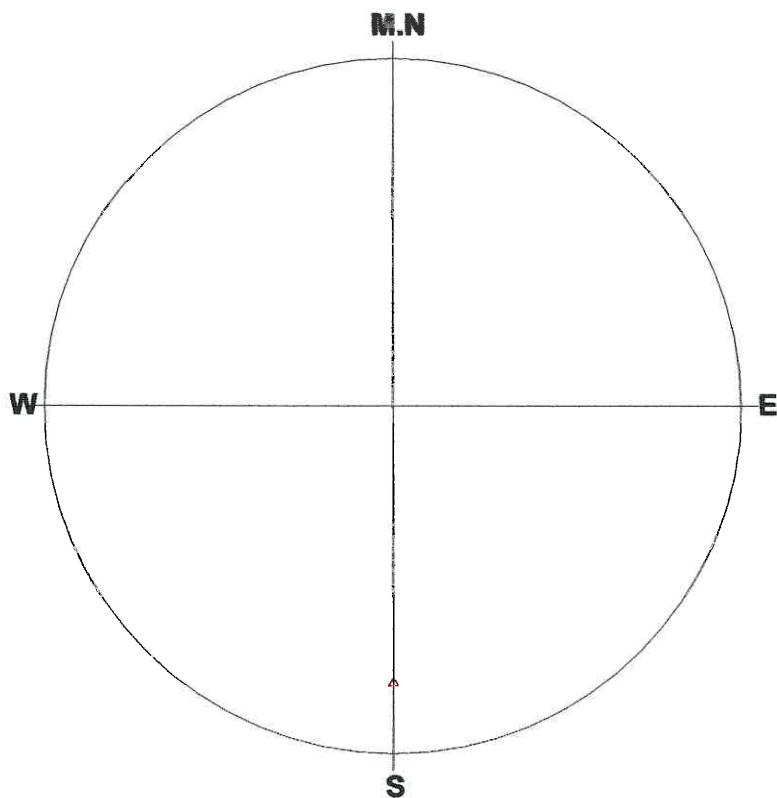
○:Foliation	--	0	+ :Mineralban-	0
◇:Joint	--	0		
□:Parting	--	13		
△:Fault	--	0		
▽:ShearZone	--	0		
×:Vein	--	0		

Schmidt (L.H)

Depth : 3.068 - 16.862 m

Aperture : 0.0 - 57.0 mm

C-62.STR
<<FAULT>>



Number of Data : 1/72

<Legend>

○:Foliation	--	0	+ :Mineralban-	0
◇:Joint	--	0		
□:Parting	--	0		
△:Fault	--	1		
▽:ShearZone	--	0		
×:Vein	--	0		

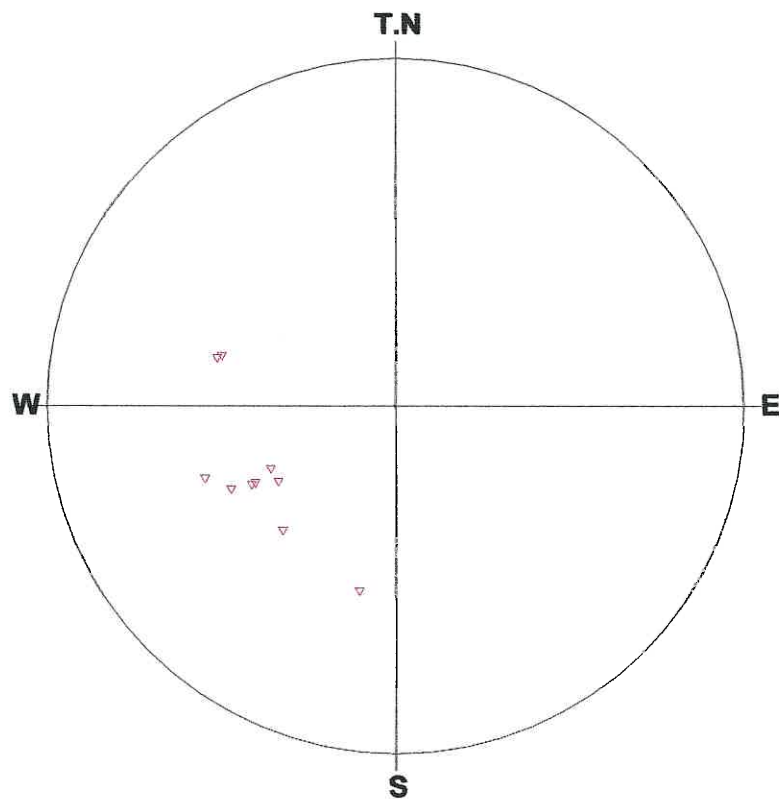
Schmidt (L.H)

Depth : 3.068 - 16.862 m

Aperture : 0.0 - 57.0 mm

C-62.STR

<<SHEAR ZONE>>



Number of Data : 10/72

<Legend>

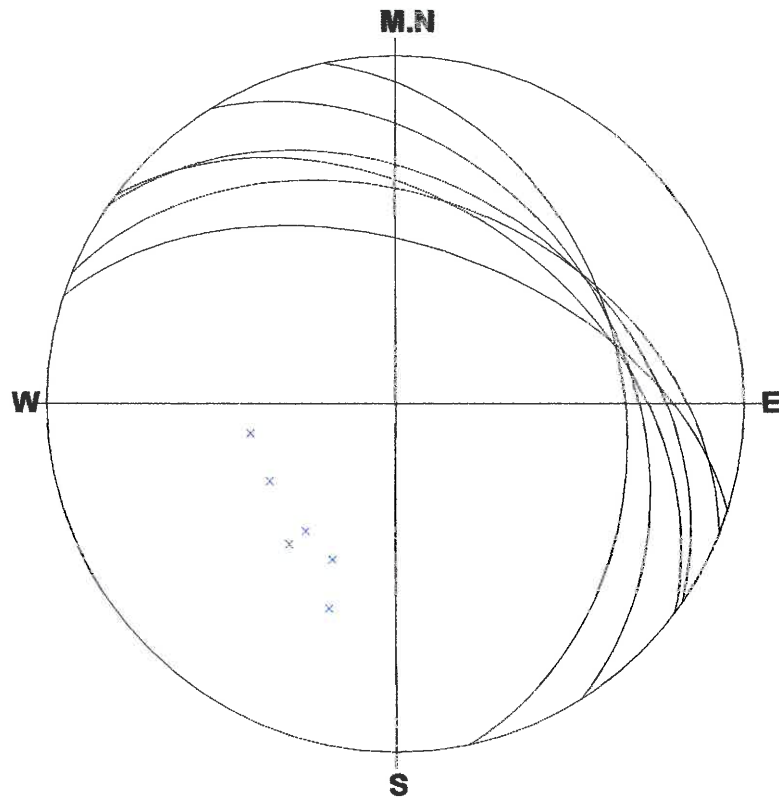
○:Foliation	--	0	+ :Mineralban-	0
◇:Joint	--	0		
□:Parting	--	0		
△:Fault	--	0		
▽:ShearZone-		10		
×:Vein	--	0		

Schmidt (L.H)

Depth : 3.068 - 16.862 m

Aperture : 0.0 - 57.0 mm

C-62.STR
<<FOLIATION>>



Number of Data:6/72

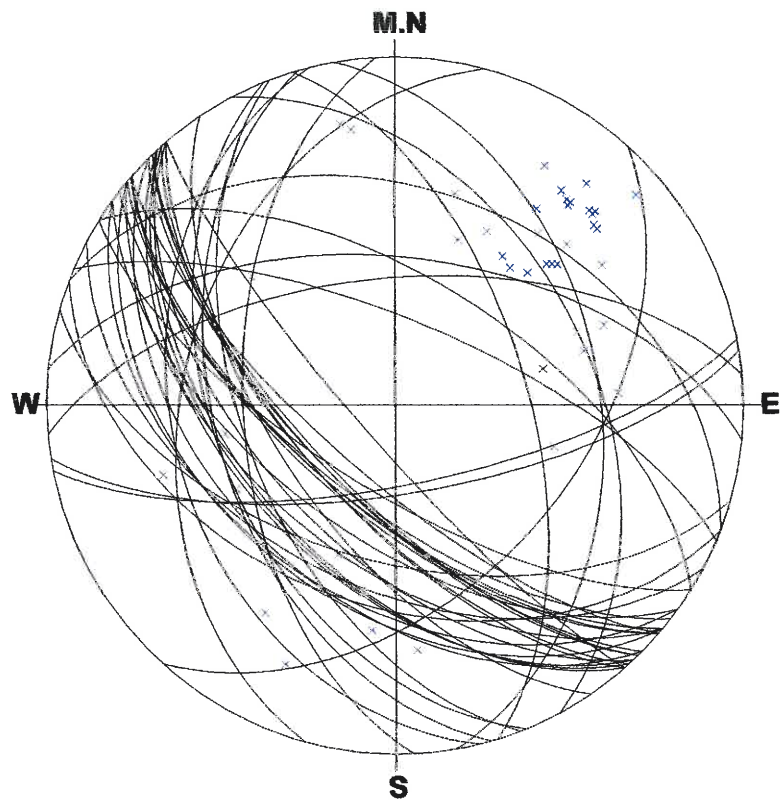
1 : 022/40(4)	6 : 037/42(56)
2 : 018/52(8)	
3 : 058/35(28)	
4 : 078/35(30)	
5 : 035/37(48)	

Schmidt (L.H)

Depth : 3.068 - 16.862 m

Aperture : 0.0 - 57.0 mm

C-62.STR
<<JOINT>>



Number of Data:42/72

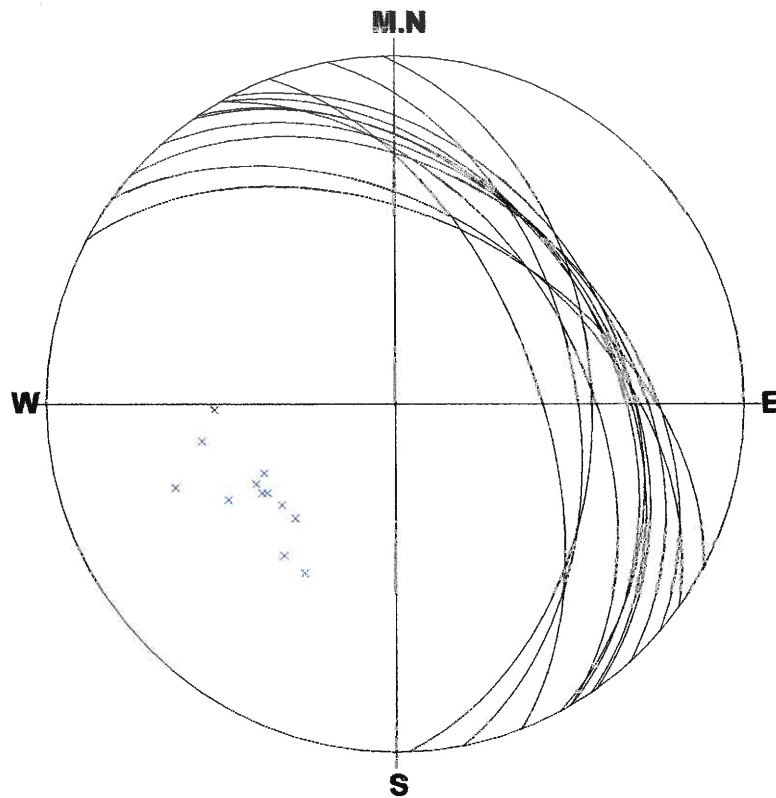
1 : 285/39(3)	6 : 216/59(17)
2 : 229/81(5)	7 : 228/51(18)
3 : 228/66(9)	8 : 196/53(19)
4 : 169/71(14)	9 : 201/42(21)
5 : 132/46(15)	10 : 171/69(25)

Schmidt (L.H)

Depth : 3.068 - 16.862 m

Aperture : 0.0 - 57.0 mm

C-62.STR
<<PARTING>>



Number of Data:13/72

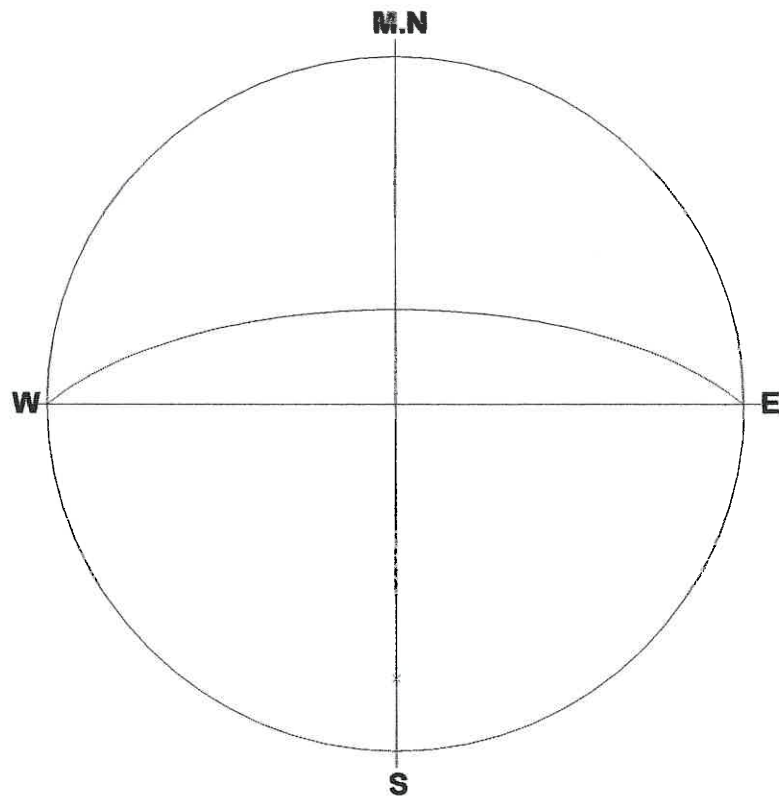
1 : 079/47(1)	6 : 060/46(32)
2 : 069/57(2)	7 : 056/38(44)
3 : 041/36(20)	8 : 060/38(54)
4 : 041/36(22)	9 : 028/46(57)
5 : 048/36(27)	10 : 036/45(63)

Schmidt (L.H)

Depth : 3.068 - 16.862 m

Aperture : 0.0 - 57.0 mm

C-62.STR
<<FAULT>>



Number of Data:1/72

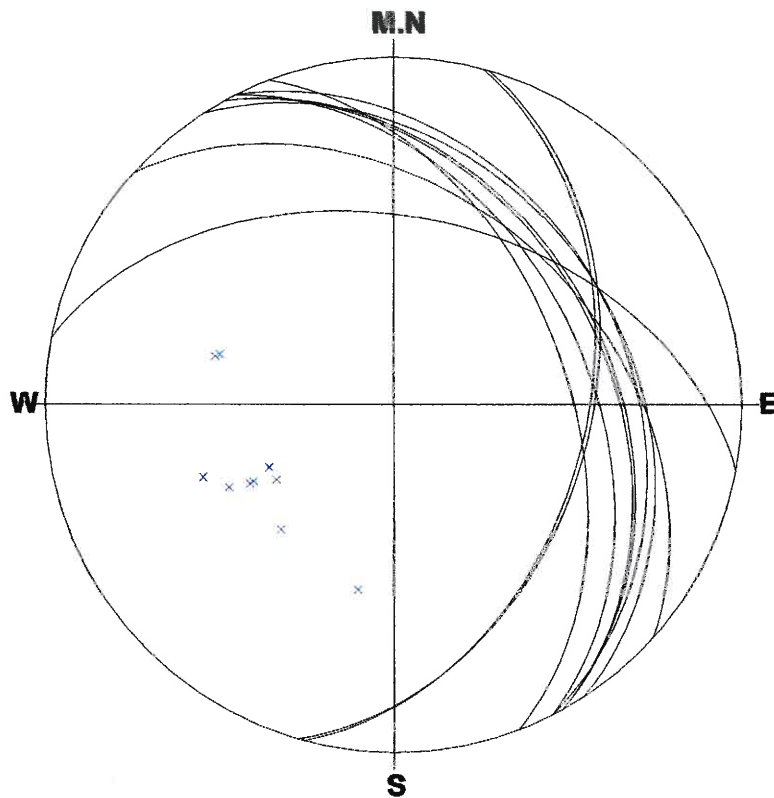
1 : 000/68(6)

Schmidt (L.H)

Depth : 3.068 - 16.862 m

Aperture : 0.0 - 57.0 mm

C-62.STR
<<SHEAR ZONE>>



Number of Data:10/72

1 : 105/44(7)	6 : 057/33(16)
2 : 106/43(10)	7 : 061/38(23)
3 : 061/39(11)	8 : 063/33(24)
4 : 069/49(12)	9 : 042/40(41)
5 : 011/45(13)	10 : 063/44(61)

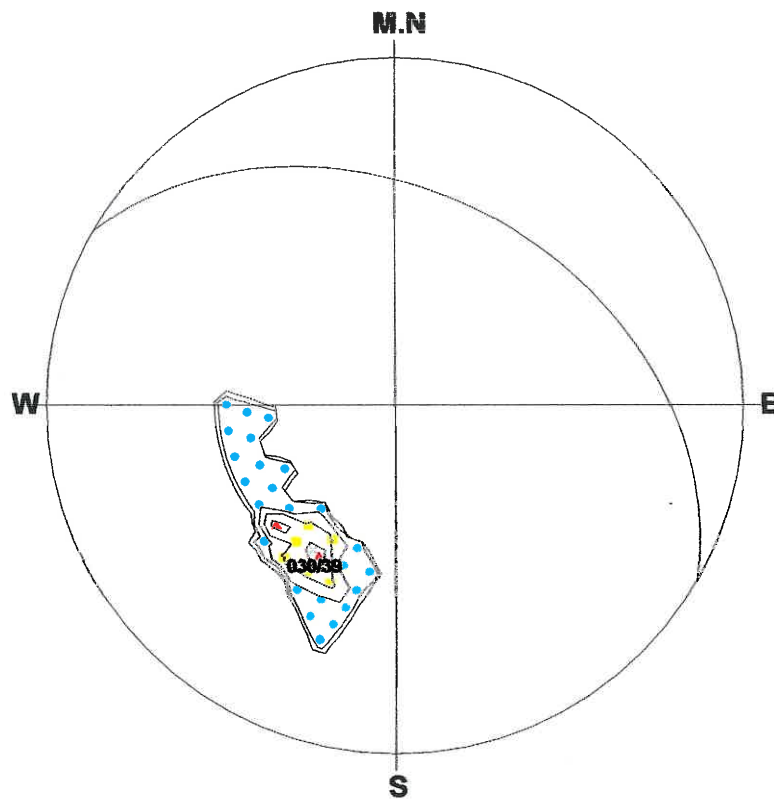
Schmidt (L.H)

Depth : 3.068 - 16.862 m

Aperture : 0.0 - 57.0 mm

C-62.STR
<<FOLIATION>>

******* % Diagram *******



Number of Data : 6

<Legend> Sym. (%)

- ▲ : 50
- ▼ : 40 - 50
- : 30 - 40
- ◆ : 20 - 30
- : 10 - 20
- + : 0 - 10

Contour Value (%)

- Contour 1 : 0 ☐
- Contour 2 : 10 ☐
- Contour 3 : 20 ☐
- Contour 4 : 30 ☐
- Contour 5 : 40 ☐
- Contour 6 : 50 ☐

Schmidt (L.H)

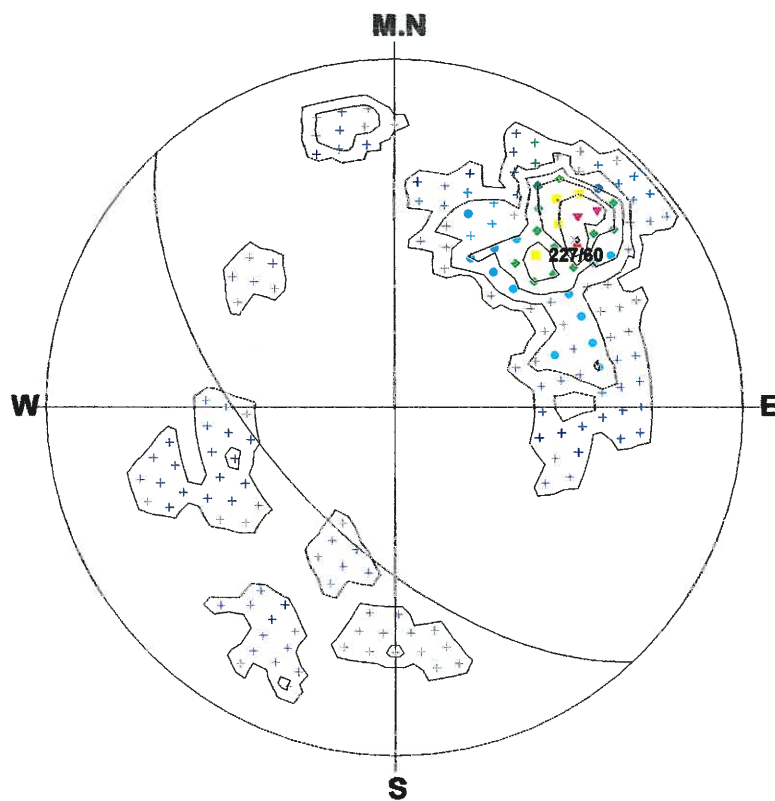
Depth : 3.068 - 16.862 m

Aperture : 0.0 - 57.0 mm

C-62.STR

<<JOINT>>

***** % Diagram *****



Number of Data : 42

<Legend> Sym. (%)

- ▲ : 26
- ▼ : 20 - 26
- : 15 - 20
- ◆ : 10 - 15
- : 5 - 10
- ⊕ : 0 - 5

Contour Value (%)

- Contour 1 : 0
- Contour 2 : 5
- Contour 3 : 10
- Contour 4 : 15
- Contour 5 : 20
- Contour 6 : 26



Schmidt (L.H)

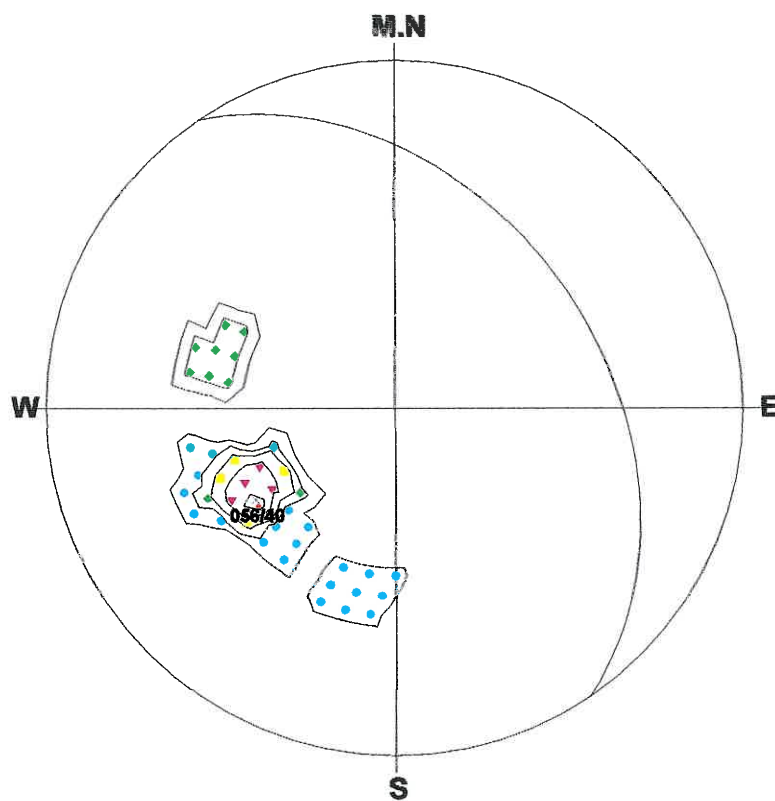
Depth : 3.068 - 16.862 m

Aperture : 0.0 - 57.0 mm

C-62.STR

<<SHEAR ZONE>>

******* % Diagram *******



Number of Data : 10

<Legend> Sym. (%)

- ▲ : 50**
- ▼ : 40 - 50**
- : 30 - 40**
- ◆ : 20 - 30**
- : 10 - 20**
- ⊕ : 0 - 10**

Contour Value (%)

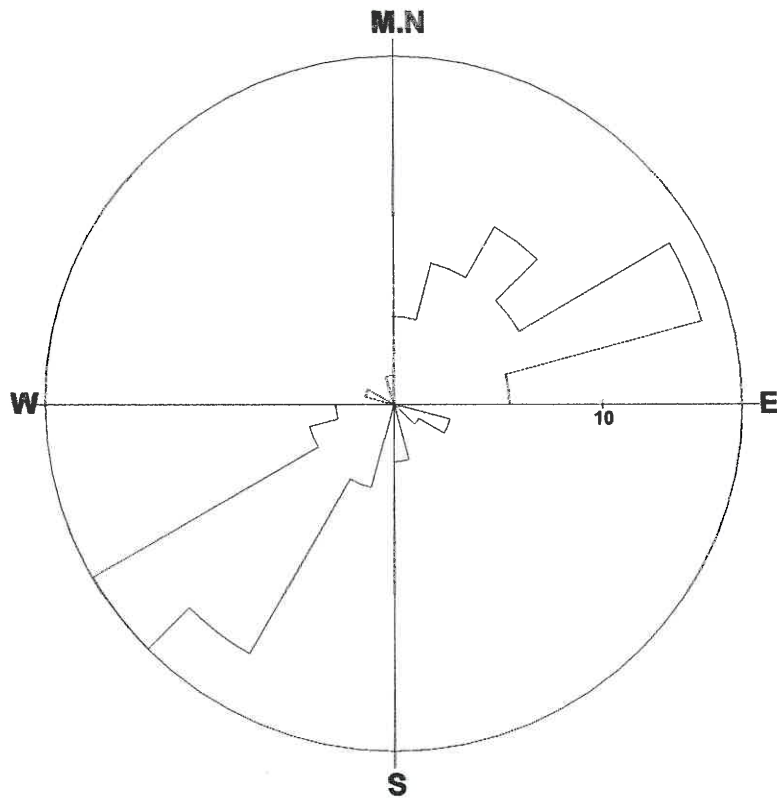
- Contour 1 : 0**
- Contour 2 : 10**
- Contour 3 : 20**
- Contour 4 : 30**
- Contour 5 : 40**
- Contour 6 : 50**

Schmidt (L.H)

Depth : 3.068 - 16.862 m

Aperture : 0.0 - 57.0 mm

C-62.STR
<<FOLIATION>>



Number of Data : 72/72

Max : 16.7%

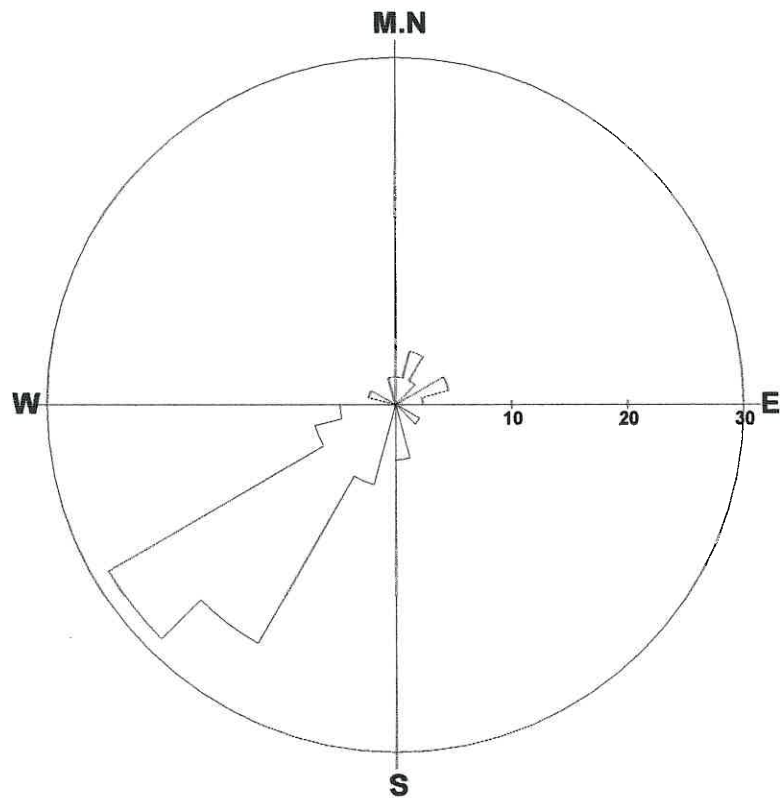
Grouping Angle : 15 deg

Dir	%	Dir	%	Dir	%
0-	4	135-	0	270-	0
15-	7	150-	0	285-	1
30-	10	165-	3	300-	0
45-	7	180-	0	315-	0
60-	15	195-	4	330-	0
75-	6	210-	14	345-	1
90-	0	225-	17		
105-	3	240-	4		
120-	1	255-	3		

Depth : 3.068 - 16.862 m

Aperture : 0.0 - 57.0 mm

C-62.STR
<<JOINT>>



Number of Data : 42/72

Max : 28.6%

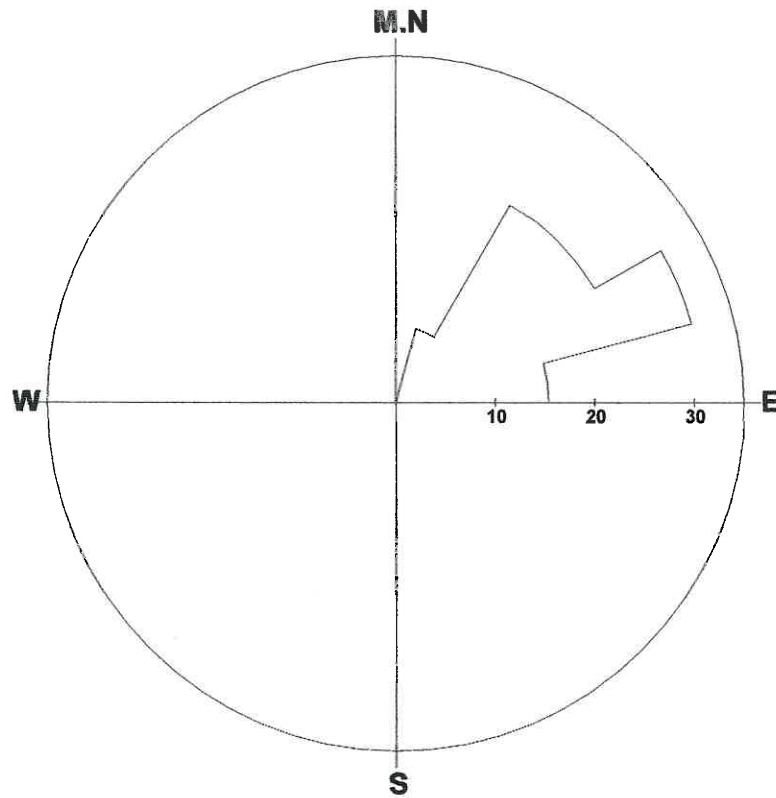
Grouping Angle : 15 deg

Dir	%	Dir	%	Dir	%
0-	2	135-	0	270-	0
15-	5	150-	0	285-	2
30-	2	165-	5	300-	0
45-	0	180-	0	315-	0
60-	5	195-	7	330-	0
75-	2	210-	24	345-	2
90-	0	225-	29		
105-	0	240-	7		
120-	2	255-	5		

Depth : 3.058 - 16.862 m

Aperture : 0.0 - 57.0 mm

C-62.STR
<<PARTING>>



Number of Data : 13/72

Max : 30.8%

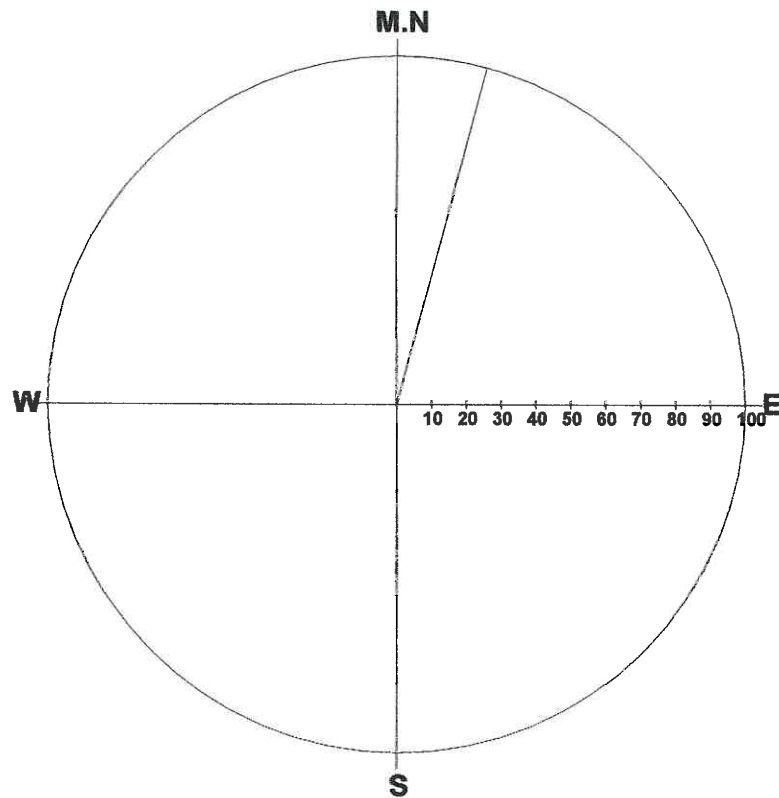
Grouping Angle : 15 deg

Dir	%	Dir	%	Dir	%
0-	0	135-	0	270-	0
15-	8	150-	0	285-	0
30-	23	165-	0	300-	0
45-	23	180-	0	315-	0
60-	31	195-	0	330-	0
75-	15	210-	0	345-	0
90-	0	225-	0		
105-	0	240-	0		
120-	0	255-	0		

Depth : 3.068 - 16.862 m

Aperture : 0.0 - 57.0 mm

C-62.STR
<<FAULT>>



Number of Data : 1/72

Max : 100.0%

Grouping Angle : 15 deg

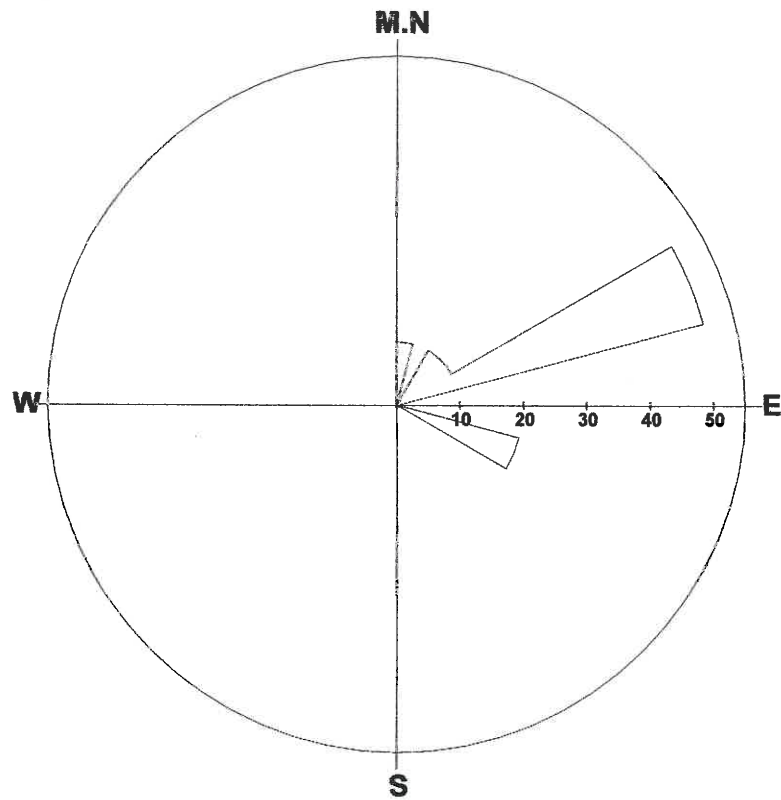
Dir	%	Dir	%	Dir	%
0-	100	135-	0	270-	0
15-	0	150-	0	285-	0
30-	0	165-	0	300-	0
45-	0	180-	0	315-	0
60-	0	195-	0	330-	0
75-	0	210-	0	345-	0
90-	0	225-	0		
105-	0	240-	0		
120-	0	255-	0		

Depth : 3.068 - 16.862 m

Aperture : 0.0 - 57.0 mm

C-62.STR

<<SHEAR ZONE>>



Number of Data : 10/72

Max : 50.0%

Grouping Angle : 15 deg

Dir	%	Dir	%	Dir	%
0-	10	135-	0	270-	0
15-	0	150-	0	285-	0
30-	10	165-	0	300-	0
45-	10	180-	0	315-	0
60-	50	195-	0	330-	0
75-	0	210-	0	345-	0
90-	0	225-	0		
105-	20	240-	0		
120-	0	255-	0		

Depth : 3.068 - 16.862 m

Aperture : 0.0 - 57.0 mm

Title: C-62.STR
 Comment: JOINT
 Depth: 3.068 - 16.862 m
 Aperture: 0.0 - 57.0 mm

Sort: 1/ 7
 Form: 5/ 5
 Condition: 11/11
 Remark: 9/ 9

2011/ 8/ 30
 Elevation: 0.000m
 Water Level: 13.413m

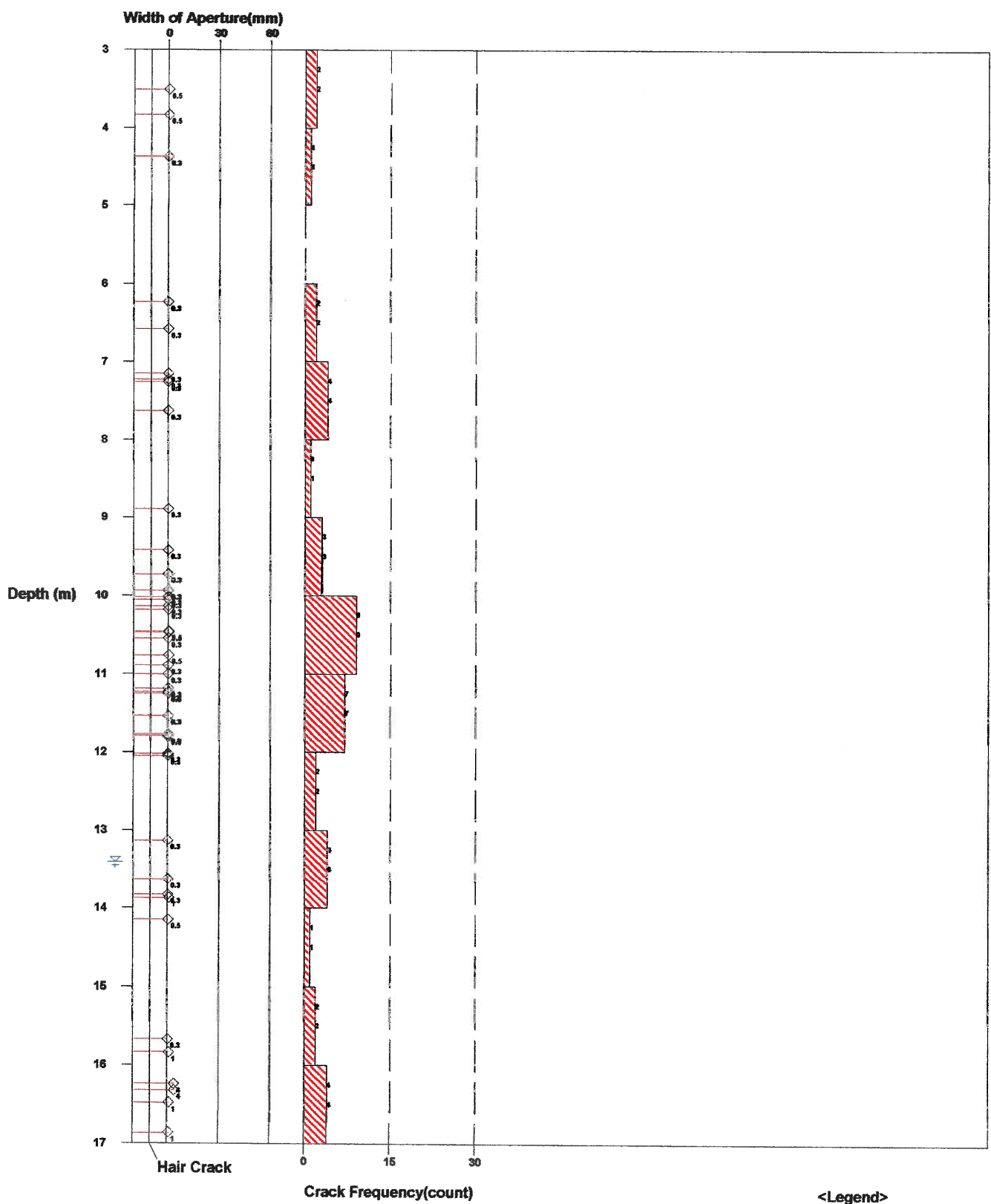


Fig. Rock Mass Condition Graph

☐ All Crack Frequency
☐ Open Crack Frequency
 Water Level

2011/ 8/ 30
Elevation: 0.000m
Water Level: 13.413m



Fig. Rock Mass Condition Graph

Title: C-62.STR
 Comment: FAULT
 Depth: 3.068 - 16.862 m
 Aperture: 0.0 - 57.0 mm

Sort: 1/ 7
 Form: 5/ 5
 Condition: 11/11
 Remark: 9/ 9

2011/ 8/ 30
 Elevation: 0.000m
 Water Level: 13.413m

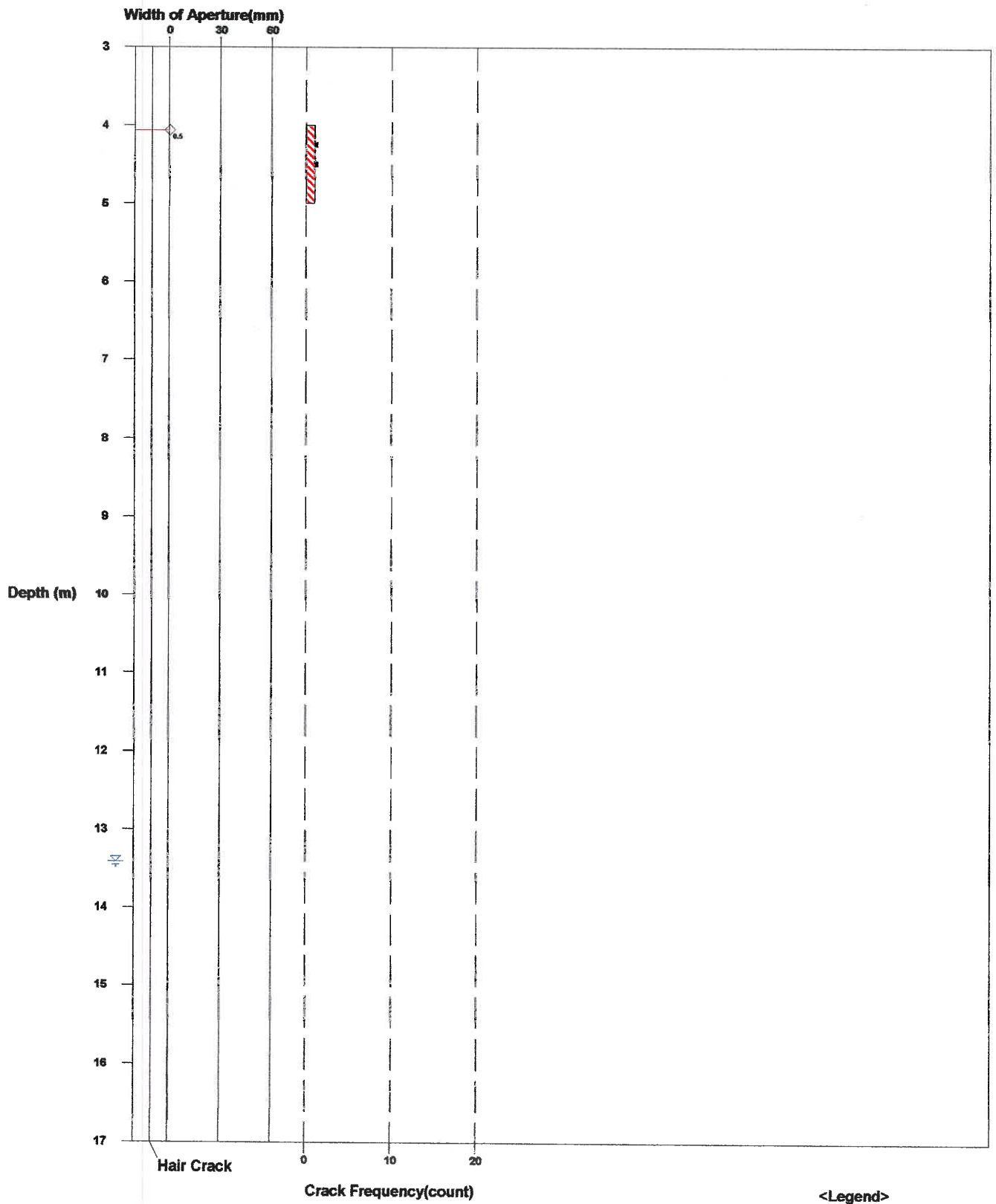


Fig. Rock Mass Condition Graph

Title: C-62.STR
 Comment: SHEAR ZONE
 Depth: 3.068 - 16.862 m
 Aperture: 0.0 - 57.0 mm

Sort: 1/ 7
 Form: 5/ 5
 Condition: 11/11
 Remark: 9/ 9

2011/ 8/ 30
 Elevation: 0.000m
 Water Level: 13.413m

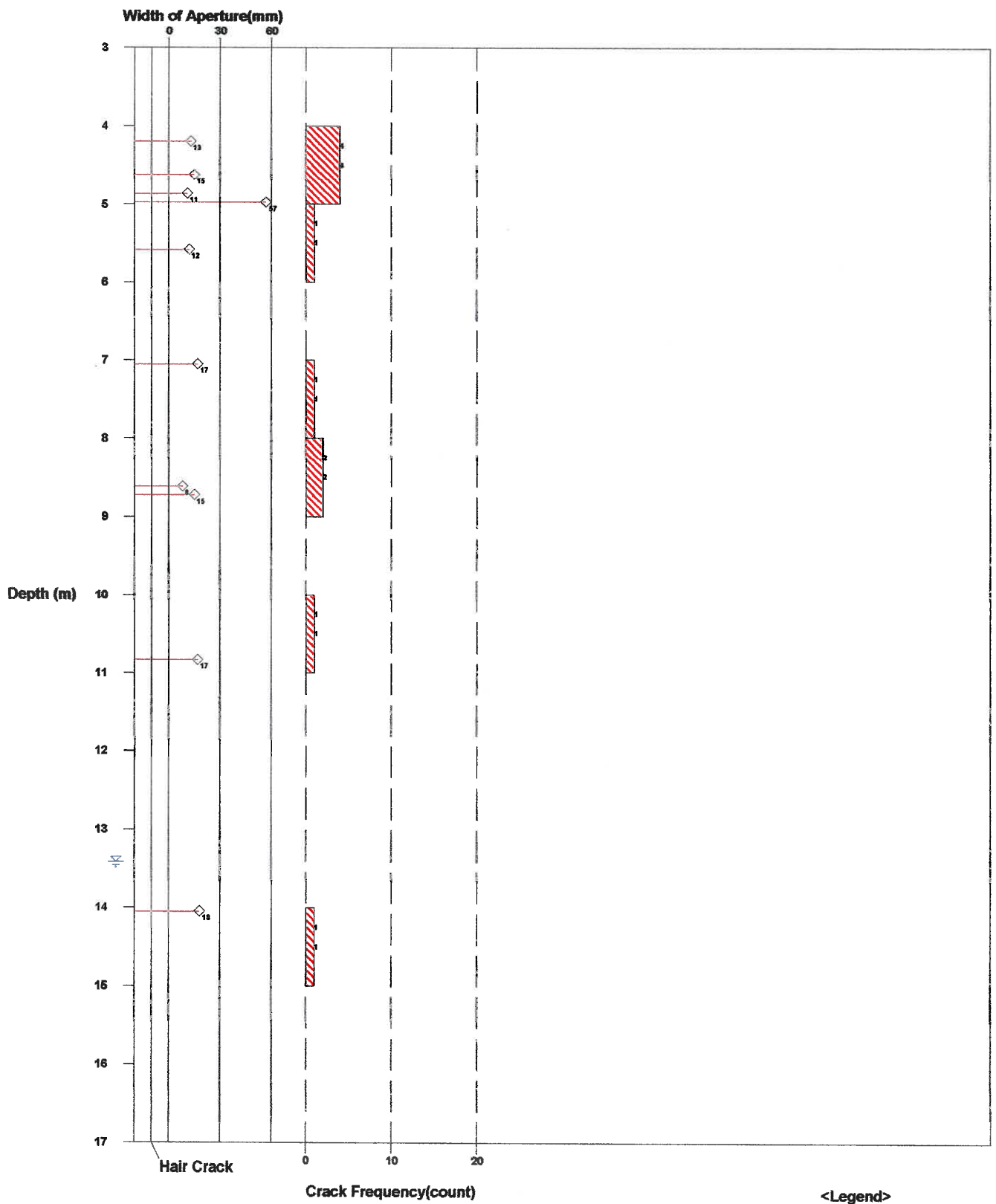
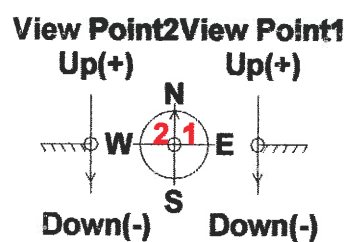
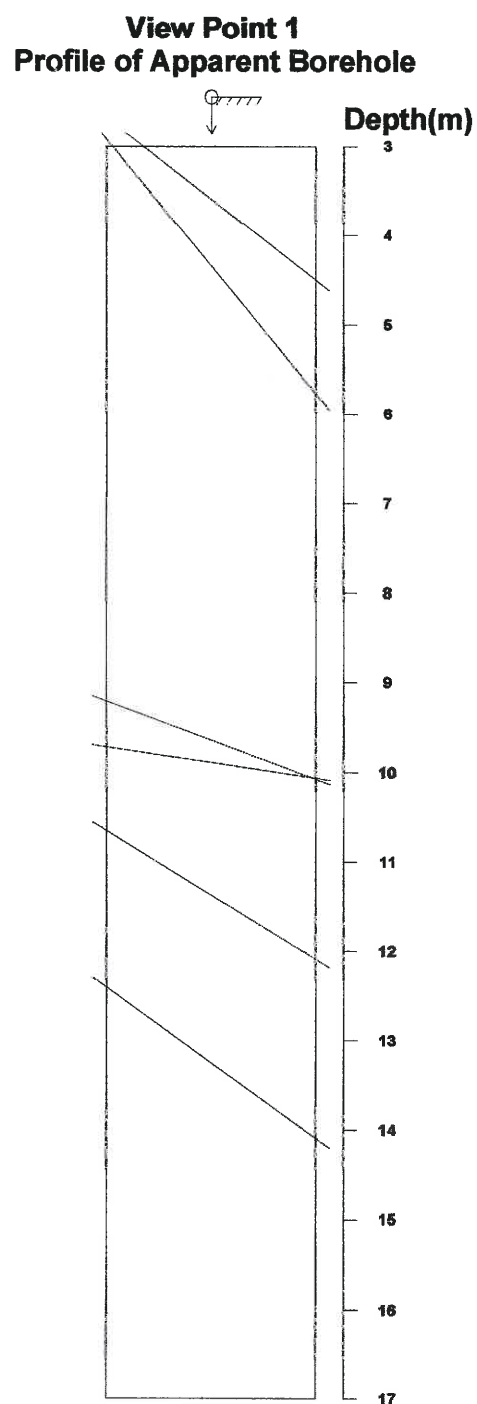
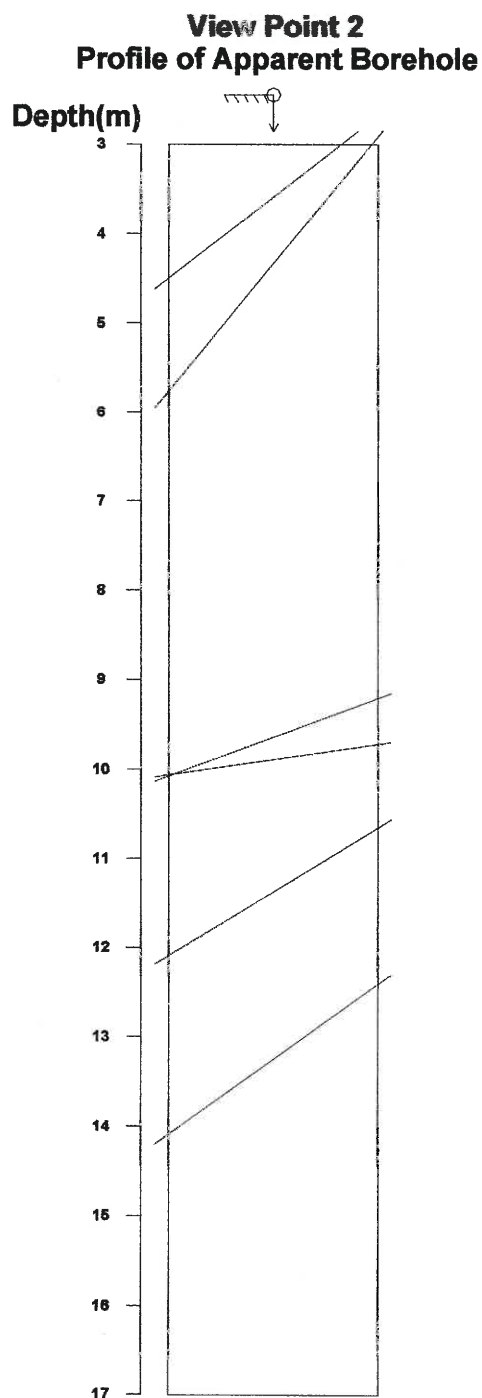


Fig. Rock Mass Condition Graph

☐ All Crack Frequency
☐ Open Crack Frequency
 Water Level

Title: C-62.STR
 Comment: FOLIATION
 Depth: 3.068 - 16.862 m
 Aperture: 0.0 - 57.0 mm

Sort: 1/ 7
 Form: 5/ 5
 Condition: 11/11
 Remark: 9/ 9



Direction: 0 deg
 Inclination: Vertical(Down)

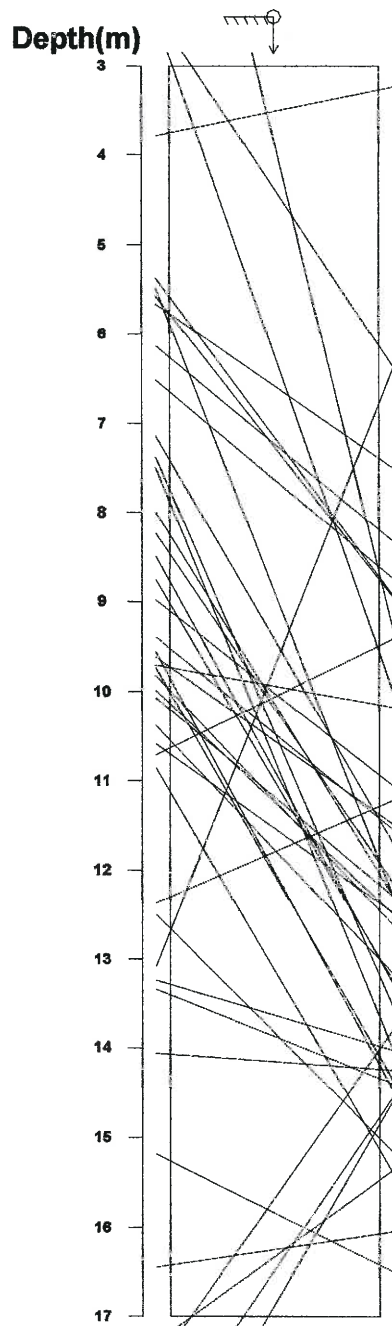
<Legend>
 Entrance G.L.
 Bottom

Fig. Apparent Dip

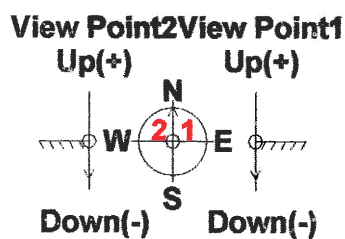
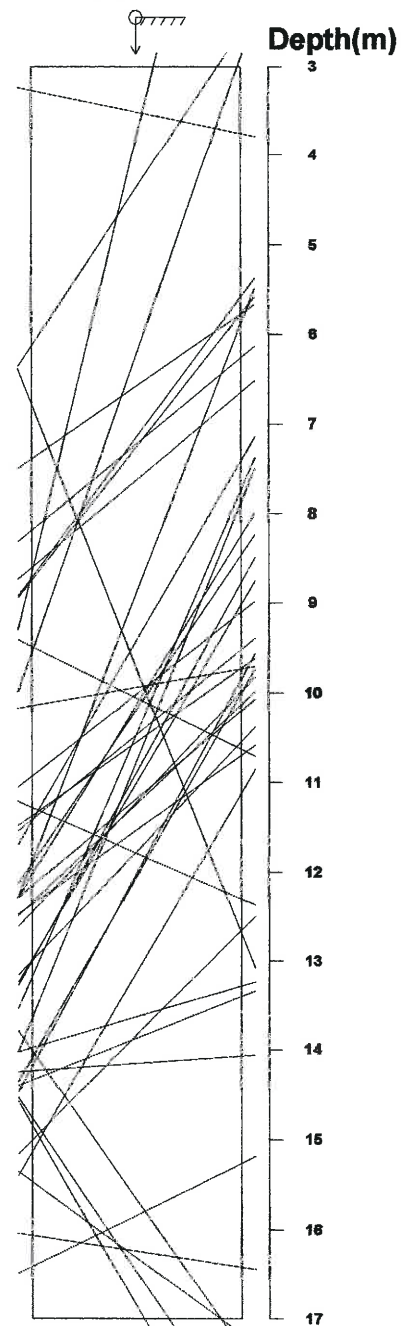
Title: C-62.STR
 Comment: JOINT
 Depth: 3.068 - 16.862 m
 Aperture: 0.0 - 57.0 mm

Sort: 1/ 7
 Form: 5/ 5
 Condition: 11/11
 Remark: 9/ 9

View Point 2
Profile of Apparent Borehole



View Point 1
Profile of Apparent Borehole



Direction: 0 deg
 Inclination: Vertical(Down)

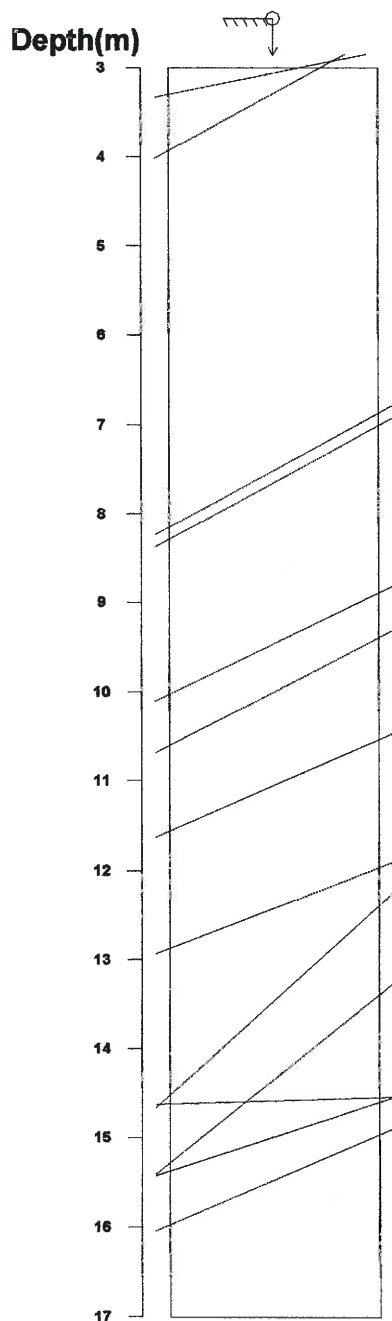
<Legend>
 Entrance G.L.
 Bottom

Fig. Apparent Dip

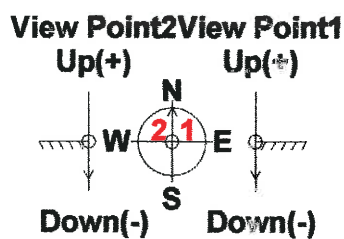
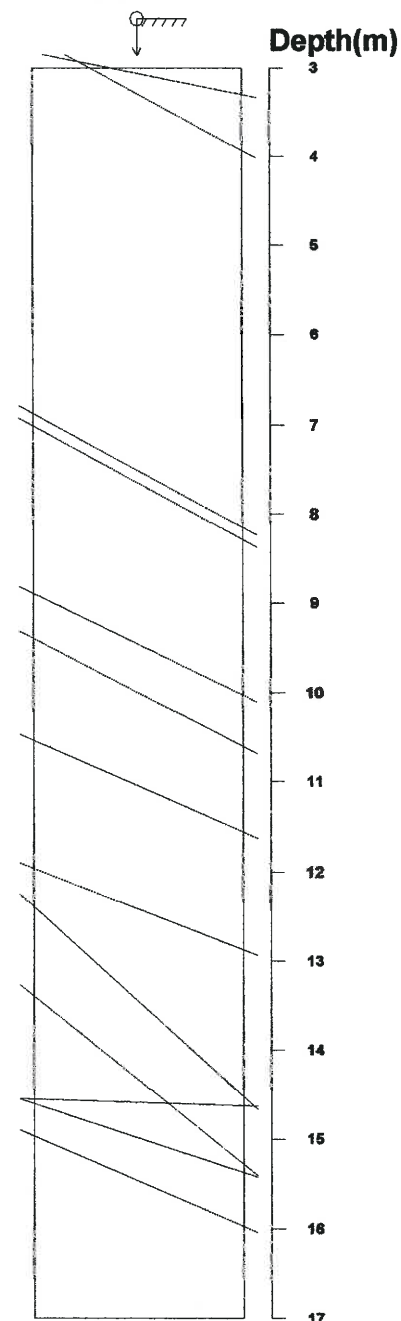
Title: C-62.STR
 Comment: PARTING
 Depth: 3.068 - 16.862 m
 Aperture: 0.0 - 57.0 mm

Sort: 1/ 7
 Form: 5/ 5
 Condition: 11/11
 Remark: 9/ 9

View Point 2
 Profile of Apparent Borehole



View Point 1
 Profile of Apparent Borehole



Direction: 0 deg
 Inclination: Vertical(Down)

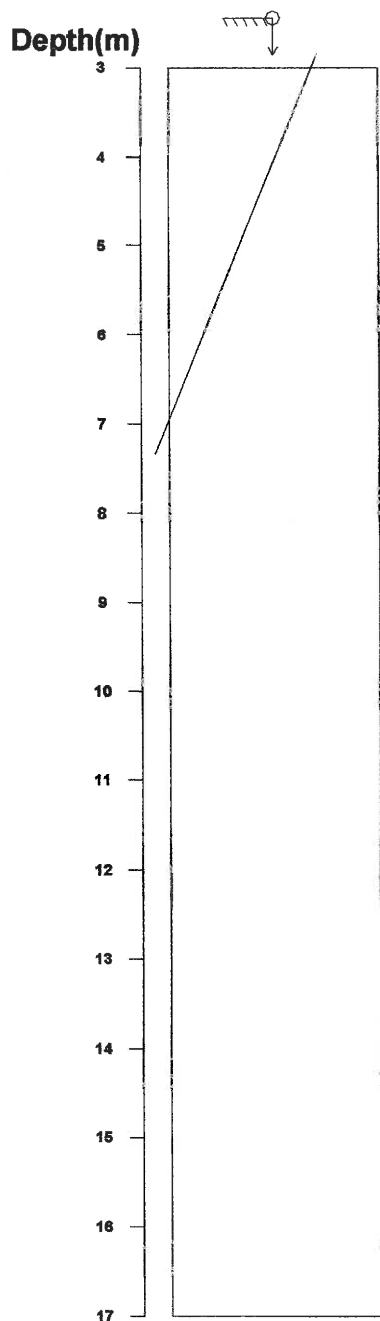
<Legend>
 Entrance G.L.
 Bottom

Fig. Apparent Dip

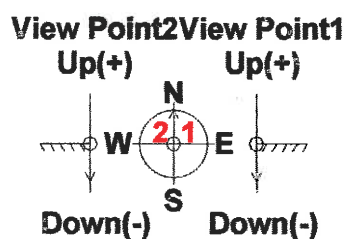
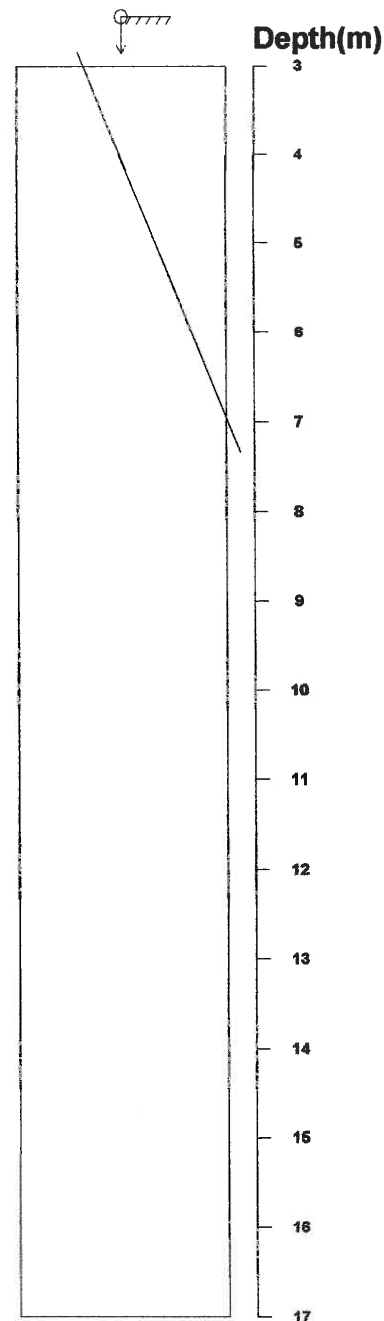
Title: C-62.STR
 Comment: FAULT
 Depth: 3.068 - 16.862 m
 Aperture: 0.0 - 57.0 mm

Sort: 1/ 7
 Form: 5/ 5
 Condition: 11/11
 Remark: 9/ 9

View Point 2
 Profile of Apparent Borehole



View Point 1
 Profile of Apparent Borehole



Direction: 0 deg
 Inclination: Vertical(Down)

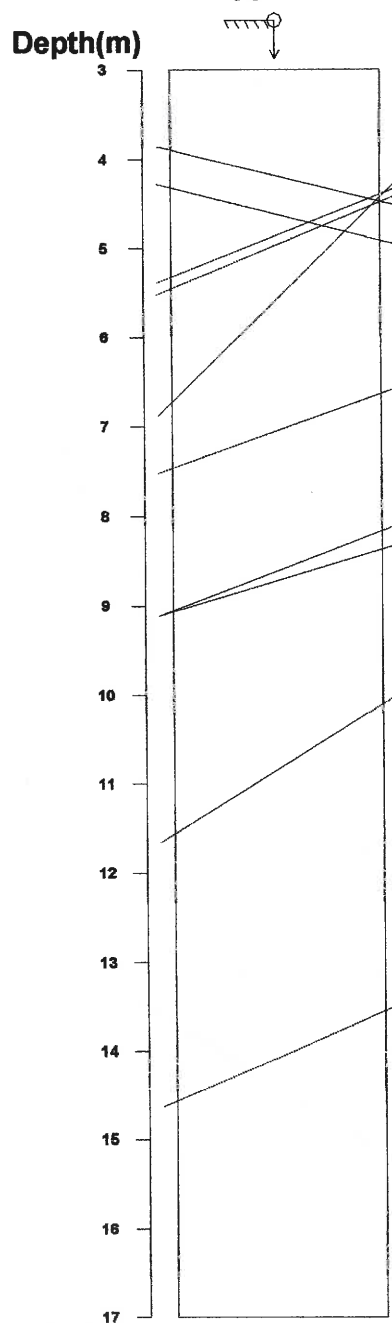
<Legend>
 Entrance G.L.
 Bottom Bottom

Fig. Apparent Dip

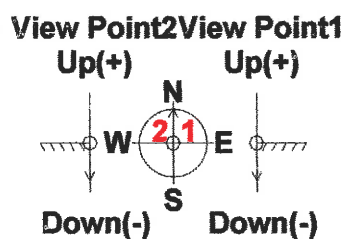
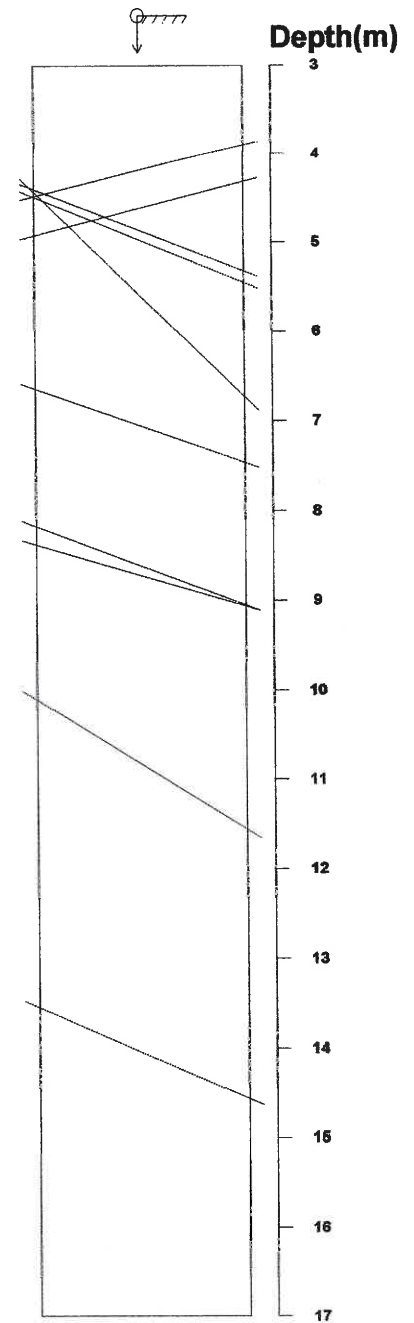
Title: C-62.STR
 Comment: SHEAR ZONE
 Depth: 3.068 - 16.862 m
 Aperture: 0.0 - 57.0 mm

Sort: 1/ 7
 Form: 5/ 5
 Condition: 11/11
 Remark: 9/ 9

View Point 2
Profile of Apparent Borehole



View Point 1
Profile of Apparent Borehole



Direction: 0 deg
 Inclination: Vertical(Down)

<Legend>
 Entrance G.L.
 Bottom

Fig. Apparent Dip