

## **COPYRIGHT NOTICE**

This geotechnical log and its associated data (the Document) is licensed by the Queensland Department of Transport and Main Roads under the [Creative Commons Attribution 4.0 Licence](#) (CC BY 4.0). When reusing the Document, in whole or in part, please attribute the Department and author as follows: "*(c) State of Queensland (Department of Transport and Main Roads) 2020, licensed under the CC BY 4.0 Licence, prepared by Arup*". This licence does not apply to logos or trademarks.

## **LIMITATION OF LIABILITY**

The CC BY 4.0 Licence contains a comprehensive Disclaimer of Warranties and Limitation of Liability. In addition, please note that this Document was prepared for Departmental use only. Reuse of the Document by anyone for any other purpose could result in error and/or loss. You should obtain professional advice before making decisions based on the contents of the Document.

When reproducing any part of this Document, you must also reproduce this limitation of liability notice in addition to the italicised attribution statement above.

Retrieved from the Queensland Geotechnical Database <http://ggd.org.au/>

This log has been contributed to the Queensland Geotechnical Database with the permission of Arup.

## BOREHOLE RECORD

SHEET 1

HOLE BH114

OF 1

PROJECT South West Arterial

LOGGED BY PBF

DATES 28/7/99

CONTRACTOR SP & KF Christensen Pty Ltd

ANGLE Vertical

GROUND LEVEL RL 57.1

DRILL MODEL Jacro 350

BEARING

EASTING 491 523.0

MOUNTING 4WD Truck

DIAMETER

NORTHING 939 364.1

DRILLING	STRATA			MATERIAL DESCRIPTION	CONDITION						OBSERVATION		
	SAMPLE, TEST, BIT, SUPPORT, ETC.	R.L.	DEPTH		GROUP SYMBOL	LEGEND	SOIL TYPE Colour, Plasticity, Grain Size, Minor Components	WATER / MOISTURE	CONSISTENCY				SOIL ORIGIN, STRUCTURE, ETC.
AHD		m	VS	CH					ST	VH	VL	JM	
Augering			0.6	CL	Sandy CLAY: Red brown								RESIDUAL
Wash Boring			1.2		SANDSTONE: Orange brown, very low strength, extremely weathered Auger refusal clay content increasing								XW SANDSTONE/ XW SILTSTONE
			1.6		SANDSTONE: Light orange brown to grey, fine grained, silt content increasing								
SPT @ 1.6m 30/135mm N=R			2.2		SILTSTONE: Grey, extremely weathered increasing in strength								
			3.0		Roller bit refusal								
			3.0		Start Coring at 3.0m								
			4.0										
			5.0										
			6.0										
			7.0										
			8.0										
			9.0										
			10.0										

NOTES

JOB

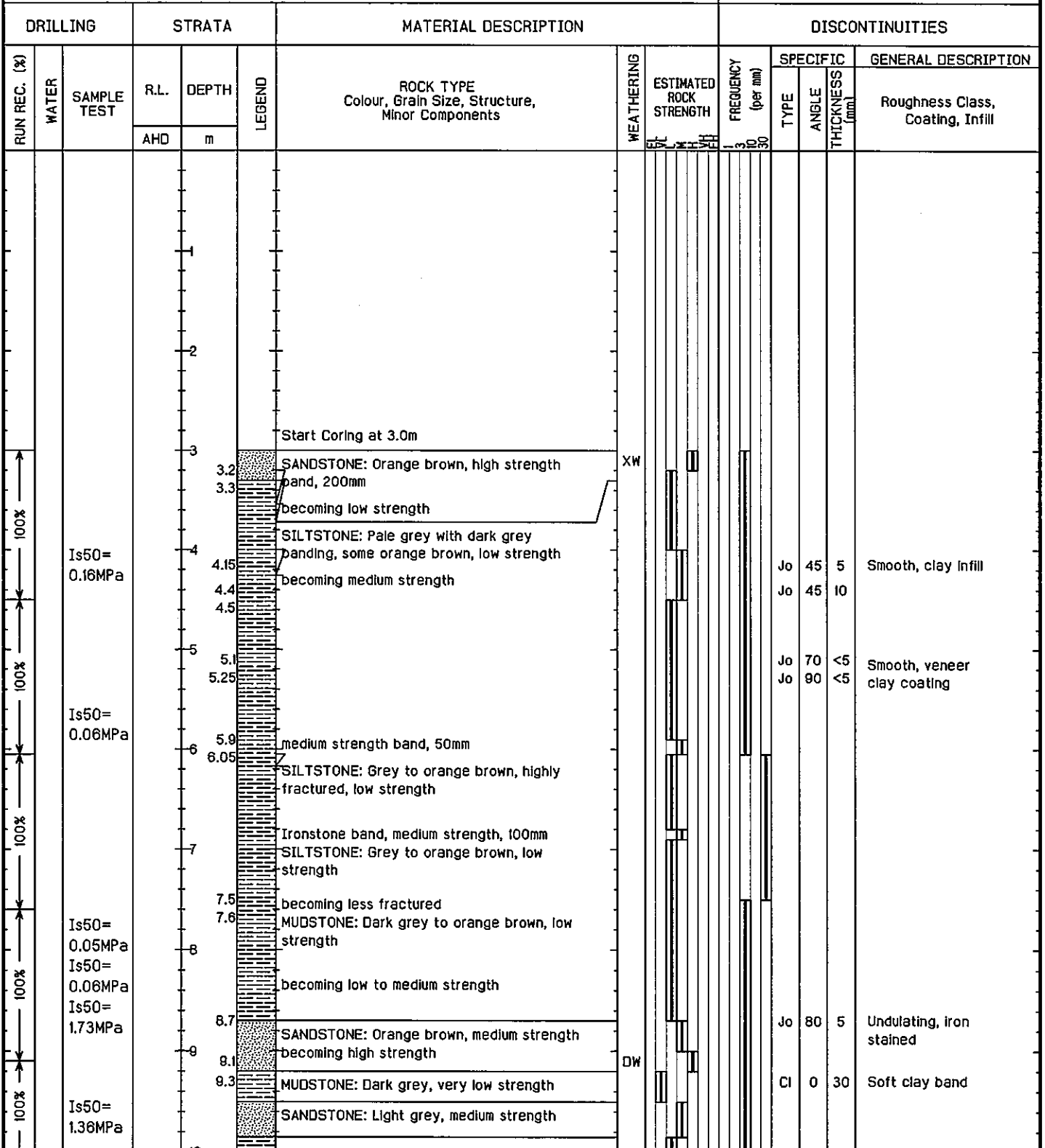
11613

PROJECT South West Arterial

LOGGED BY PBF  
DATE/S 28/7/99

CONTRACTOR SP & KF Christensen Pty Ltd      ANGLE Vertical  
DRILL MODEL Jacro 350                                      BEARING  
MOUNTING 4WD Truck                                      DIAMETER NMLC

GROUND LEVEL RL 57.1  
NORTHING 939 364.1  
EASTING 491 523.0



NOTES

TYPE OF DISCONTINUITY  
Jo JOINT  
Be BEDDING PLANE PARTING  
Fo FOLIATION PARTING  
Cl CLAY SEAM  
We WEATHERED SEAM  
Cr CRUSHED SEAM  
Sh SHEARED ZONE

JOB

11613

PROJECT South West Arterial

LOGGED BY PBF

DATE/S 28/7/99

CONTRACTOR SP & KF Christensen Pty Ltd

ANGLE Vertical

GROUND LEVEL RL 57.1

DRILL MODEL Jacro 350

BEARING

NORTHING 939 364.1

MOUNTING 4WD Truck

DIAMETER NMLC

EASTING 491 523.0

DRILLING			STRATA			MATERIAL DESCRIPTION	DISCONTINUITIES						
RUN REC. (%)	WATER	SAMPLE TEST	R.L. AHD	DEPTH m	LEGEND		WEATHERING	ESTIMATED ROCK STRENGTH	FREQUENCY (per m)	SPECIFIC		GENERAL DESCRIPTION	
									TYPE	ANGLE	THICKNESS (mm)		
100%		Is50= 0.72MPa		10.2	[Pattern]	SANDSTONE: Light grey with dark grey banding, medium strength			Cl	0	10	Clay seam Closed	
		Is50= 0.80MPa		10.6		SANDSTONE with interbedded MUDSTONE: Light grey with dark grey banding, medium strength				Jo	70	<5	
100%		Is50= 0.40MPa		11.6		becoming high strength				Jo	0	<5	Smooth, iron stained
				12		END BH114 at 12.1m							
				13									
				14									
				15									
				16									
				17									
				18									
				19									
				20									

NOTES

TYPE OF DISCONTINUITY

JOB

- Jo JOINT
- Be BEDDING PLANE PARTING
- Fo FOLIATION PARTING
- Cl CLAY SEAM
- We WEATHERED SEAM
- Cr CRUSHED SEAM
- Sh SHEARED ZONE

11613



**BOREHOLE 114**

**PLATE No. 13**