

## **COPYRIGHT NOTICE**

This geotechnical log and its associated data (the Document) is licensed by the Queensland Department of Transport and Main Roads under the [Creative Commons Attribution 4.0 Licence](#) (CC BY 4.0). When reusing the Document, in whole or in part, please attribute the Department and author as follows: "*(c) State of Queensland (Department of Transport and Main Roads) 2020, licensed under the CC BY 4.0 Licence, prepared by Insitu Geotech Services*". This licence does not apply to the Queensland Government logo or trademarks.

## **LIMITATION OF LIABILITY**

The CC BY 4.0 Licence contains a comprehensive Disclaimer of Warranties and Limitation of Liability. In addition, please note that this Document was prepared for Departmental use only. Reuse of the Document by anyone for any other purpose could result in error and/or loss. You should obtain professional advice before making decisions based on the contents of the Document.

When reproducing any part of this Document, you must also reproduce this limitation of liability notice in addition to the italicised attribution statement above.

Retrieved from the Queensland Geotechnical Database <http://ggd.org.au/>

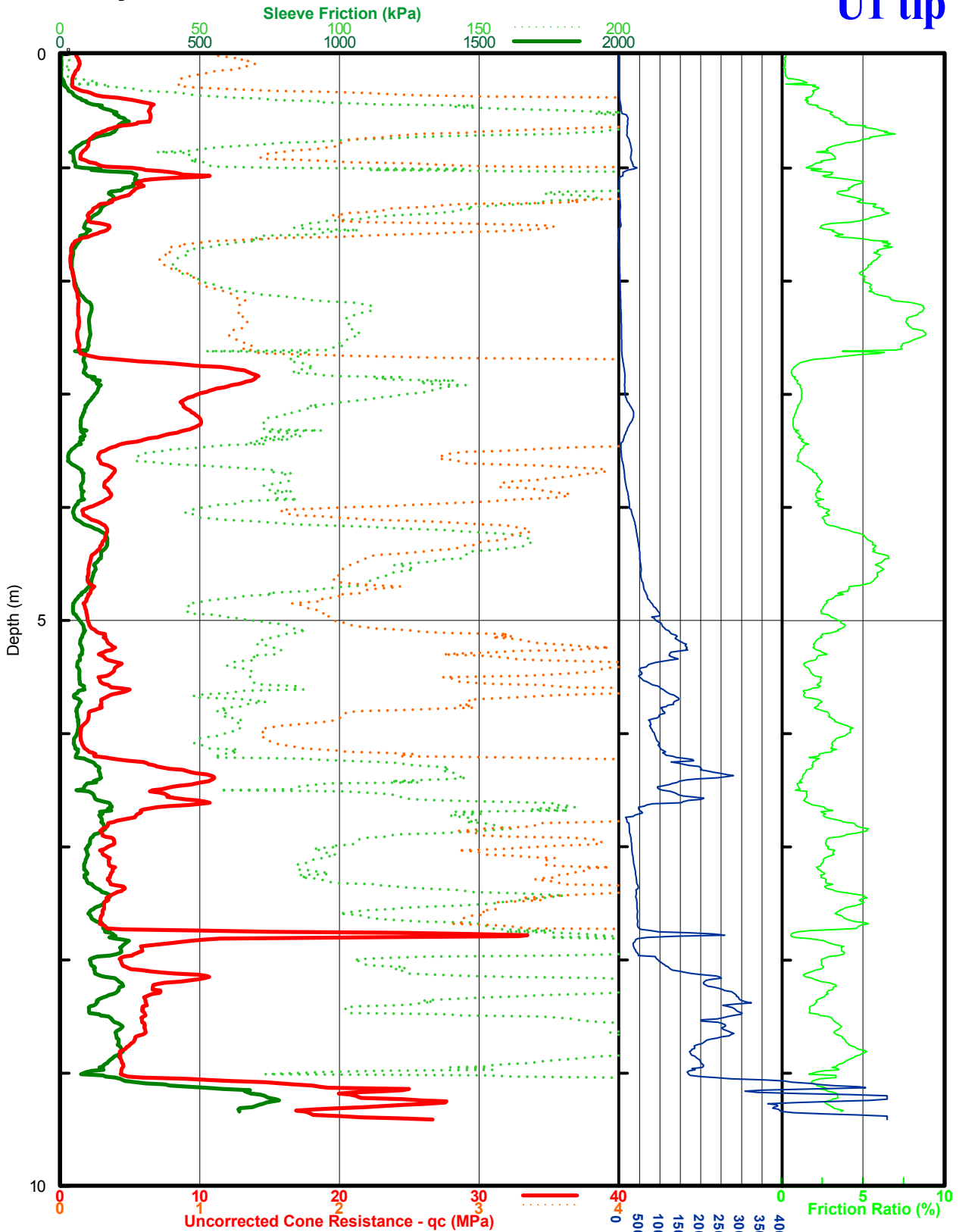
This log has been contributed to the Queensland Geotechnical Database with the permission of Insitu Geotech Services.

# CONE PENETROMETER TEST RESULT

TMR Geotechnical  
R2D  
Oxley Creek QLD

# CPTU112

## U1 tip



Job Number : G15-04-04  
 Test Date : 24/04/2015  
 DGPS Position : 56 J 0498563, 6950935  
 DGPS Format : GDA  
 Rig : Eileen  
 Cone Number : S15CFIIP.S11105  
 Predrill Depth : 0.00m  
 Dissipation Tests @ : N/A  
 Terminated Due To : Required Depth Reached

Tested By : Sergey Skrobotov  
 Test Category : IGS-1S  
 Checked By : Sergey Skrobotov

Pore Pressure (kPa)

Insitu  
Geotech  
Services  
Pty Ltd

