

COPYRIGHT NOTICE

This geotechnical log and its associated data (the Document) is licensed by the Queensland Department of Housing and Public Works under the [Creative Commons Attribution 4.0 Licence](#) (CC BY 4.0). When reusing the Document, in whole or in part, please attribute the Department and author as follows: "*(c) State of Queensland (Department of Housing and Public Works) 2020, licensed under the CC BY 4.0 Licence, prepared by Arup*". This licence does not apply to logos or trademarks.

LIMITATION OF LIABILITY

The CC BY 4.0 Licence contains a comprehensive Disclaimer of Warranties and Limitation of Liability. In addition, please note that this Document was prepared for Departmental use only. Reuse of the Document by anyone for any other purpose could result in error and/or loss. You should obtain professional advice before making decisions based on the contents of the Document.

When reproducing any part of this Document, you must also reproduce this limitation of liability notice in addition to the italicised attribution statement above.

Retrieved from the Queensland Geotechnical Database <http://qgd.org.au/>

This log has been contributed to the Queensland Geotechnical Database with the permission of Arup.

BOREHOLE RECORD

HOLE

BH23

SHEET 1

OF 2

PROJECT	LANG PARK REDEVELOPMENT			LOGGED BY	VL
CONTRACTOR	SP & KF Christensen	ANGLE	Vertical	DATE/S	16.11.00
DRILL MODEL	Jacro 350	BEARING	-	GROUND LEVEL	-RL 19.3m
MOUNTING	4WD Truck	DIAMETER	50/75/100mm	LOCATION	Refer Borehole Plan

DRILLING	STRATA				MATERIAL DESCRIPTION	CONDITION										OBSERVATION				
	SAMPLE, TEST, BIT, SUPPORT, ETC.	R.L.	DEPTH	GROUP SYMBOL		LEGEND	SOIL TYPE Colour, Plasticity, Grain Size, Minor Components	WATER / MOISTURE	CONSISTENCY										SOIL ORIGIN, STRUCTURE, ETC.	
		AHD	m						COHESIVE					NON COHESIVE						
					VS	SL			ST	SH	VL	LL	MD	DD	VD					
SPT @ 1.5m 30,75mm N = Refusal	19.20	0.10			TOPSOIL: brown dark brown Silty sandy GRAVEL/Gravelly SAND: dark brown, fine to coarse gravel													TOPSOIL ALLUVIAL		
	18.30	1.00			becoming lighter in colour XW ROCK: Pale brown cream													XWROCK		
	17.30	2.00			with some fine to medium gravel															
		3																		
		4																		
		5																		
		6																		
		7																		

NOTES	JOB
1) No groundwater encountered prior to washboring at 1.5m.	12215

BOREHOLE/TEST PIT LANGP2.GPJ ARUP_AUS.GDT 04/01/01

CORED BOREHOLE RECORD

HOLE
BH23

SHEET 2
OF 2

PROJECT LANG PARK REDEVELOPMENT

LOGGED BY VL
DATE/S 16.11.00

CONTRACTOR SP & KF Christensen
DRILL MODEL Jacro 350
MOUNTING 4WD Truck

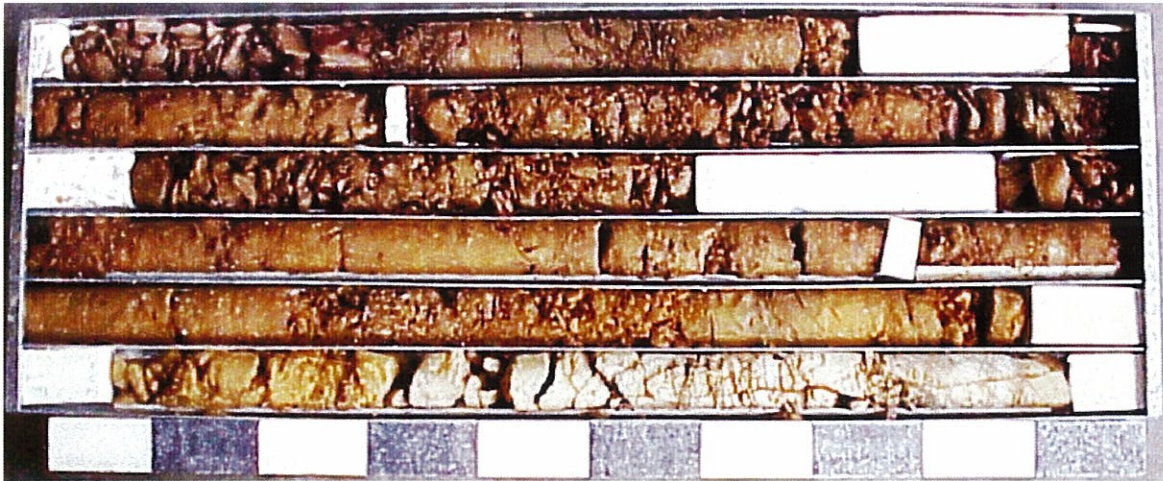
ANGLE Vertical
BEARING -
DIAMETER 50/75/100mm

GROUND LEVEL ~RL 19.3m
LOCATION Refer Borehole Plan

DRILLING		STRATA		MATERIAL DESCRIPTION						DISCONTINUITIES					
CASING RUN, REC. (%)	WATER	SAMPLE TEST	R.L.	DEPTH	LEGEND	ROCK TYPE Colour, Grain Size, Structure, Minor Components	WEATHERING	ESTIMATED ROCK STRENGTH			FREQUENCY (per m)	SPECIFIC		GENERAL DESCRIPTION Planarity, Roughness, Coating, Infill	
			AHD	m				EL	M	EH		TYPE	ANGLE		THICKNESS (mm)
				1											
				2		META-ARGILLITE: Brown to dark brown with much crushed rocks and clay, heavily fractured	XW								
				3		brown, orange brown, much crushed rocks to 4.6m									
				4											
				5		orange brown grey, dark grey									
				6											
				7											
						Mottled grey and cream brown	DW								
		Is(50)=0.58													
			11.30	8.00											

CORED BOREHOLE LANGP2.GPJ.ARUP_AUS.GDT 03/01/01

NOTES 1) No groundwater encountered prior to washboring at 1.5m.	TYPE OF DISCONTINUITY	JOB 12215
	<ul style="list-style-type: none"> Jo JOINT Be BEDDING PLANE PARTING Fo FOLIATION PARTING Cl CLAY SEAM We WEATHERED SEAM Cr CRUSHED SEAM Sh SHEARED ZONE Qr QUARTZ SEAM 	



Borehole BH23

2.00m - 8.00m

Box 1 of 1