

## **COPYRIGHT NOTICE**

This geotechnical log and its associated data (the Document) is licensed by the Queensland Department of Transport and Main Roads under the [Creative Commons Attribution 4.0 Licence](#) (CC BY 4.0). When reusing the Document, in whole or in part, please attribute the Department as follows: "*(c) State of Queensland (Department of Transport and Main Roads) 2020, licensed under the CC BY 4.0 Licence*". This licence does not apply to the Queensland Government logo or trademarks.

## **LIMITATION OF LIABILITY**

The CC BY 4.0 Licence contains a comprehensive Disclaimer of Warranties and Limitation of Liability. In addition, please note that this Document was prepared for Departmental use only. Reuse of the Document by anyone for any other purpose could result in error and/or loss. You should obtain professional advice before making decisions based on the contents of the Document.

When reproducing any part of this Document, you must also reproduce this limitation of liability notice in addition to the italicised attribution statement above.

Retrieved from the Queensland Geotechnical Database <http://qgd.org.au/>





**Queensland  
Government**

Department of  
Main Roads

# ENGINEERING BOREHOLE

FOR GEOTECHNICAL TERMS AND  
SYMBOLS REFER FORM F:GEOT 017/3-2005

BOREHOLE No     BH14    

SHEET     2     of     2    

REFERENCE No     H9791    

PROJECT     Caboolture River Bridge Foundation Investigation    

LOCATION     Pier 3 - 15.7m right (along skew) of existing southbound bridge C/L     COORDINATES     497603.6 E; 7003525.7 N    

PROJECT No     FG5439     SURFACE R.L.     3.08     DATE STARTED     16/11/05     DATUM     MGA94 Zone 56    

JOB No     25/10A/60C     DATUM     AHD     DATE COMPLETED     16/11/05     DRILLER     Drillsure Pty Ltd    

DEPTH (m)	R.L. (m)	AUGER CASING WASH BORING CORE DRILLING	RQD (%)	CORE REC %	SAMPLE	MATERIAL DESCRIPTION	USC WEATHERING	INTACT STRENGTH			DEFECT SPACING (mm)			GRAPHIC LOG	ADDITIONAL DATA AND TEST RESULTS	SAMPLES TESTS
								EH	VH	IM	JVL	20	60			
10	-6.92															
	-7.02					<b>SANDSTONE: HW: As above.</b> MW: Pale orange-brown, ironstained, medium to coarse grained, low to low-medium strength, occasional dark grey siltstone laminae and conglomerate bands containing grey siltstone rip-up clasts.  Defects: Numerous subhorizontal bedding partings. Rare 70-80° planar joints.	HW								<i>Pile Tip - 7.0</i> Is(50)=0.12 MPa Is(50)=0.28 MPa	x o
11															10.74-11.4m: Conglomerate band containing siltstone rip-up clasts and occasional thin black coal laminae.	
12				100 (81)											11.7-12.0m: 80° planar joint. 12.2-12.28m: 80° planar joint.	x o
13						Medium grained below 13.27m.	MW									
14						13.5-13.90m: Pale grey with no iron staining.									13.69m: 5m black coal laminae. 13.74-13.76m: Grey siltstone band. 13.8-14.95m: 70° planar joint.	
15	-12.07			100		Pale grey with only a trace of orange-brown iron staining below 14.5m.									Is(50)=0.13 MPa Is(50)=0.22 MPa	x o
16						Borehole terminated at 15.15m										
17																
18																
19																
20																

REMARKS

LOGGED BY  
A O'Rourke

Project: FOUNDATION INVESTIGATION FOR THE WIDENING OF THE CAPTAIN WHISH BRIDGES (NORTH AND SOUTHBOUND) – CABOOLTURE RIVER

Borehole No: BH14 Pier 3

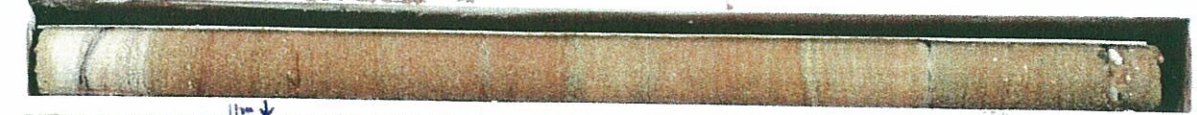
Start Depth: 10.10m

Finish Depth: 15.15m

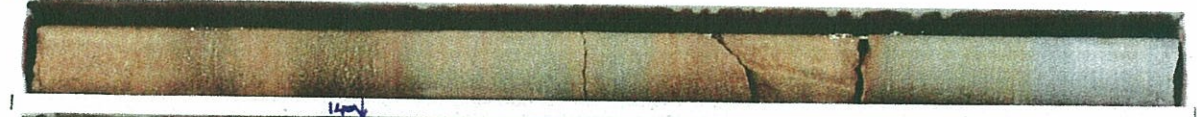
Project No: FG5439

H No: 9791

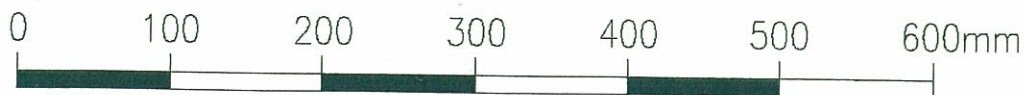
START 10.10m



FG 5439 CAPTAIN WHISH BRIDGE PIER 3 BH 14 H 9791 1/2 MID-ROW 13.03m



FG 5439 CAPTAIN WHISH BRIDGE PIER 3 BH 14 H 9791 1/2



SCALE 1:5

F:GEOT043/1



# Point Load Strength Index - Test Report

Project: CABOOLTURE RIVER BRIDGE

Project No: FG 5439

Date Sampled 16/11/05

Feature: PIER 3

Sample Type: NMLC ROCK CORE

Date Tested 14/12/05

Report No. FG 5439/13/GS05/822AS4133.4.1

Sample Number	Sample Location	Depth (m)	Test Type D,A,B,I*	Is (MPa)	Is50 (MPa)	Strength Descriptor**	Lithology
GS05/822-A	BH14	10.32	D	0.12	0.12	L	Sandstone
GS05/822-B	BH14	10.35	A	0.32	0.28	L	Sandstone
GS05/822-C	BH14	11.64	D	0.18	0.18	L	Sandstone
GS05/822-D	BH14	11.67	A	0.18	0.16	L	Sandstone
GS05/822-E	BH14	14.73	D	0.13	0.13	L	Sandstone
GS05/822-F	BH14	14.76	A	0.23	0.22	L	Sandstone

## Sample Remarks

\* D - Diametral; A - Axial; B - Block; I - Irregular;

\*\* EL - Extremely Low; VL - Very Low; L - Low; M - Medium; H - High; VH - Very High; EH - Extremely High ( taken from AS1726 Table 8A )

## Remarks / Variations to Test Procedures:

Test Method: AS4133.4.1

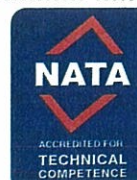
Software Version 2.03 April 2005

\*\*\*\*\*  
\*\*\*\*\*  
\*\*\*\*\*

Client Name: RS&E STRUCTURES DIVISION  
Client Address: PO BOX 1412 SPRING HILL 4001

Signatory

( P.REYNOLDS )



Accreditation Number: 2302  
Accredited for compliance with ISO/IEC 17025

This document is issued in accordance with NATA's accreditation requirements.