

COPYRIGHT NOTICE

This geotechnical log and its associated data (the Document) is licensed by the Cross River Rail Delivery Authority under the [Creative Commons Attribution 4.0 Licence](#) (CC BY 4.0). When reusing the Document, in whole or in part, please attribute as follows: "(c) *Cross River Rail Delivery Authority 2023, licensed under the CC BY 4.0 Licence, prepared by Golder Associates*". This licence does not apply to logos or trademarks.

LIMITATION OF LIABILITY

The CC BY 4.0 Licence contains a comprehensive Disclaimer of Warranties and Limitation of Liability. In addition, please note that this Document was prepared for the Cross River Rail Delivery Authority use only. Reuse of the Document by anyone for any other purpose could result in error and/or loss. You should obtain professional advice before making decisions based on the contents of the Document.

When reproducing any part of this Document, you must also reproduce this limitation of liability notice in addition to the italicised attribution statement above.

Retrieved from the Queensland Geotechnical Database <http://qgd.org.au/>



REPORT OF BOREHOLE: CRR 217

SHEET: 2 OF 4

CLIENT: Aecom Australia Pty Ltd

COORDS: 501525.31 m E 6955903.10 m N MGA94 56

DRILL RIG: FOX B40

PROJECT: Cross River Rail

SURFACE RL: 13.44 m DATUM: AHD

CONTRACTOR: Schneider Drilling Pty Ltd

LOCATION: School Rd

INCLINATION: -90°

LOGGED: RCD

DATE: 27/8/10

JOB NO: 107632034

HOLE DEPTH: 20.30 m

CHECKED: NK

DATE: 18/10/10

Drilling					Field Material Description				Defect Information			
METHOD	WATER	TCR	RQD (SCR)	DEPTH (metres)	DEPTH RL	GRAPHIC LOG	ROCK / SOIL MATERIAL DESCRIPTION	WEATHERING	INFERRED STRENGTH Is(50) MPa	DEFECT DESCRIPTION & Additional Observations		FRACTURE FREQUENCY (Defects per unit metre length)
				0								
				1								
				2								
				3	3.00 10.44		Continuation of Sheet 1					
				4			SANDSTONE medium to coarse grained, pale grey becoming orange brown, bedding @ 10°	DW				
			100	5								
			100	6	5.50 7.94		CORE LOSS				5.35: DS, 20°, Un, Ro, Ct, 15 mm, Clay & rock fragments	
				7	6.00 7.44		SANDSTONE medium to coarse grained, pale orange brown, occasional conglomerate band	DW			6.00: CZ, 10°, Un, Ro, Ct, 150 mm, Rock fragments 6.25: DS, 25°, Un, Ro, Ct, 8 mm, clay & rock fragments 6.30: DS, 5°, Un, Ro, Ct, 30 mm, clay & rock fragments	
			85	8							7.05: IS, 60°, Un, Ro, Ct, 5 mm, clay & rock fragments	
			65	9	7.70 5.74		CONGLOMERATE fine to coarse grained, pale orange brown	DW - SW			7.40: J, 37°, Un, Ro, Sn, limonite	
				10	8.12 5.32 8.32 5.17 4.97		SANDSTONE coarse to coarse grained, pale orange brown, some medium gravel band of conglomerate 80 mm band of conglomerate				8.87: CS, 30°, Un, Ro, Ct, 75 mm, Rock fragments	
			100	11	9.00 4.44		9.0 to 9.3 coarse gravel grains					
			90	12	9.30 4.14		becoming coarse grained					
				13	9.76 9.68 3.57		band of conglomerate					

This report of borehole must be read in conjunction with accompanying notes and abbreviations. It has been prepared for geotechnical purposes only, without attempt to assess possible contamination. Any references to potential contamination are for information only and do not necessarily indicate the presence or absence of soil or groundwater contamination.

GAP gINT FN. F02b
RL3



REPORT OF BOREHOLE: CRR 217

SHEET: 3 OF 4

DRILL RIG: FOX B40

CONTRACTOR: Schneider Drilling Pty Ltd

LOGGED: RCD DATE: 27/8/10

CHECKED: NK DATE: 18/10/10

CLIENT: Aecom Australia Pty Ltd

COORDS: 501525.31 m E 6955903.10 m N MGA94 56

PROJECT: Cross River Rail

SURFACE RL: 13.44 m DATUM: AHD

LOCATION: School Rd

INCLINATION: -90°

JOB NO: 107632034

HOLE DEPTH: 20.30 m

Drilling					Field Material Description				Defect Information			
METHOD	WATER	TCR	RQD (SCR)	DEPTH (metres)	DEPTH RL	GRAPHIC LOG	ROCK / SOIL MATERIAL DESCRIPTION	WEATHERING	INFERRED STRENGTH Is(50) MPa	DEFECT DESCRIPTION & Additional Observations		FRACTURE FREQUENCY (Defects per unit metre length)
				10			SANDSTONE coarse to coarse grained, pale orange brown, some medium gravel	DW - SW		9.96: B, 62°, Un, Sm, Ct, 1 mm, siltstone		
			100	90						10.46: B, 13°, Pl, Ro, Sn, limonite		
				10.90	2.54		CONGLOMERATE fine to medium grained, pale orange brown with grey					
				11.36	2.08		SANDSTONE medium to coarse grained, pale orange brown					
				11.80	1.64		becoming fine grained, some Siltstone bands			11.98: B, 8°, Un, Ro, Sn, limonite, siltstone		
			100	65						12.34: DS, 3°, Un, Sm, Ct, 30 mm, Clay & rock fragments		
				12.25	1.03		SILTSTONE fine grained, dark grey			12.61: DZ, 0°, Un, Ro, Ct, 288 mm		
				12.61	0.83		pale grey orange	RS				
							DECOMPOSED ZONE clay pale orange brown, high plasticity firm some bands of EW siltstone					
				13.27	0.17		SILTSTONE fine grained, dark grey, bedding @ 5°	FR		13.30: DS, 2°, Pl, Sm, Ct, 10 mm, clay		
			100	10						13.35: DS, 6°, Pl, Sm, Ct, 15 mm, clay & rock fragments		
										13.72: DS, 12°, Pl, Ro, Ct, 40 mm, clay & rock fragments		
										14.17: DS, 18°, Un, Ro, Ct, 30 mm, clay & rock fragments		
				15								
			100	95								
				16								
				17						17.09: CS, 4°, Pl, Sm, Ct, 15 mm, Rock fragments		
				17.64	-4.20		pale grey			17.75: DS, 3°, Pl, Sm, Ct, 30 mm, clay & rock fragments		
				18.21	-4.77		dark grey	RS		17.98: DS, 2°, Un, Sm, Ct, 25 mm, Clay		
								FR		18.16: DS, 0°, Pl, Sm, Ct, 60 mm, clay		
			100	80			SANDSTONE fine to medium grained, pale grey					
				18.62	-5.18							
				19								
				20								

This report of borehole must be read in conjunction with accompanying notes and abbreviations. It has been prepared for geotechnical purposes only, without attempt to assess possible contamination. Any references to potential contamination are for information only and do not necessarily indicate the presence or absence of soil or groundwater contamination.



GAP gINT FN. F02b
RL3



REPORT OF BOREHOLE: CRR 217

SHEET: 4 OF 4
DRILL RIG: FOX B40
CONTRACTOR: Schneider Drilling Pty Ltd
LOGGED: RCD DATE: 27/8/10
CHECKED: NK DATE: 18/10/10

CLIENT: Aecom Australia Pty Ltd
PROJECT: Cross River Rail
LOCATION: School Rd
JOB NO: 107632034
COORDS: 501525.31 m E 6955903.10 m N MGA94 56
SURFACE RL: 13.44 m DATUM: AHD
INCLINATION: -90°
HOLE DEPTH: 20.30 m

Drilling					Field Material Description					Defect Information				
METHOD	WATER	TCR	RQD (SCR)	DEPTH (metres)	DEPTH RL	GRAPHIC LOG	ROCK / SOIL MATERIAL DESCRIPTION	WEATHERING	INFERRED STRENGTH Is(50) MPa	DEFECT DESCRIPTION & Additional Observations				
NMLC		100	80	20	20.30 -6.86		SANDSTONE fine to medium grained, pale grey END OF BOREHOLE @ 20.30 m	FR						
				21										
				22										
				23										
				24										
				25										
				26										
				27										
				28										
				29										
				30										

This report of borehole must be read in conjunction with accompanying notes and abbreviations. It has been prepared for geotechnical purposes only, without attempt to assess possible contamination. Any references to potential contamination are for information only and do not necessarily indicate the presence or absence of soil or groundwater contamination.

GAP gINT FN. F02b
RL3

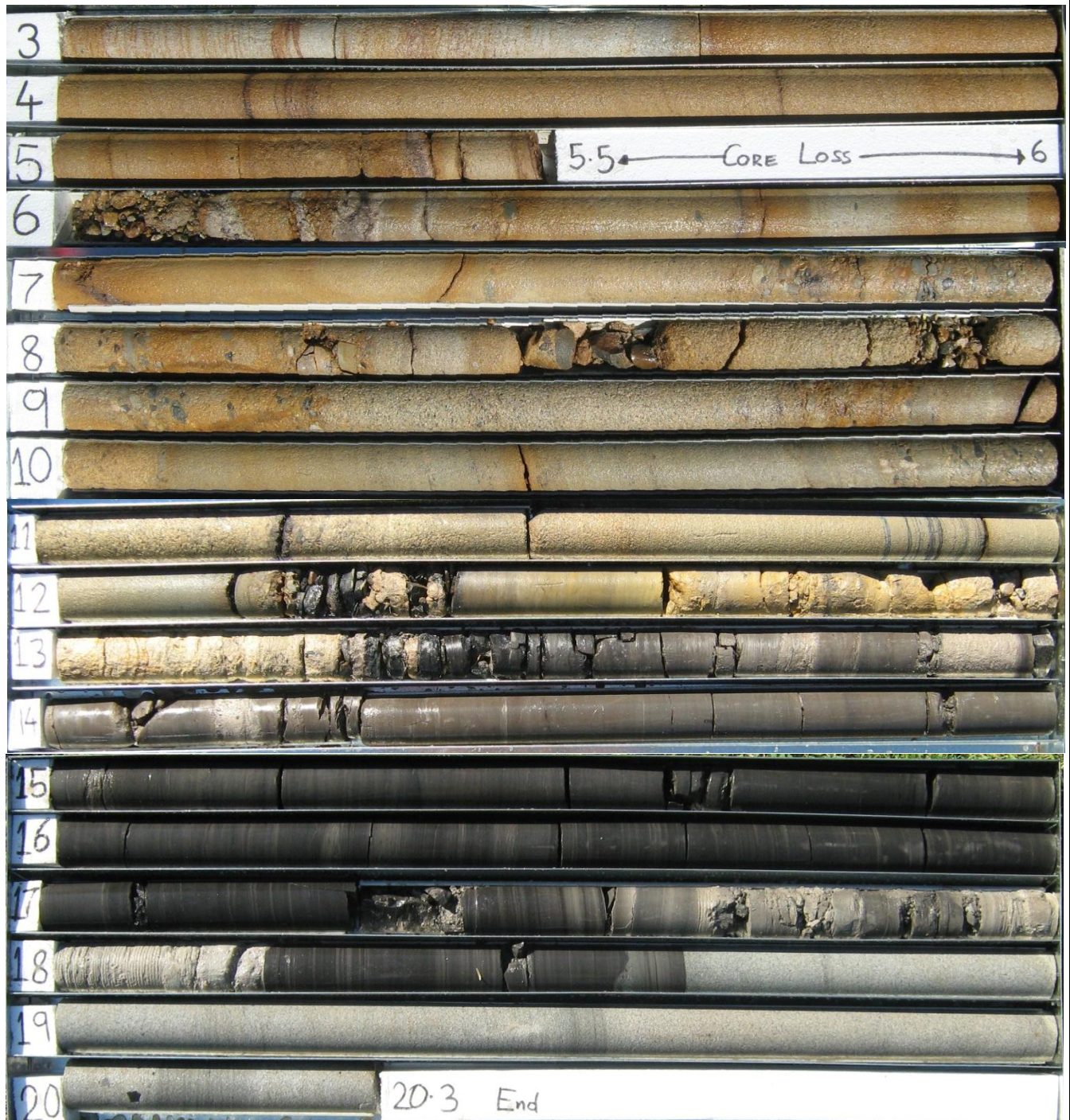


REPORT OF CORE PHOTOGRAPHS: CRR 217

CLIENT: Aecom Australia Pty Ltd
PROJECT: Cross River Rail
LOCATION: School Rd
JOB NO: 107632034

COORDS: 0501525 m E 6955903 m N
SURFACE RL: 13.44 DATUM: AHD
INCLINATION: -90°
HOLE DEPTH: 20.30 m

DEPTH RANGE: 3.00-20.30 m
DRILL RIG: Fox B40
DRILLER: Schneider Drilling Pty Ltd
LOGGED: RCD DATE: 27/08/10
CHECKED: NK DATE: 4/10/10





REPORT OF STANDPIPE INSTALLATION: CRR 217

SHEET: 1 OF 1

CLIENT: Aecom Australia Pty Ltd

COORDS: 501525.31 m E 6955903.10 m N MGA94 56

DRILL RIG: FOX B40

PROJECT: Cross River Rail

SURFACE RL: 13.44 m DATUM: AHD

CONTRACTOR: Schneider Drilling Pty Ltd

LOCATION: School Rd

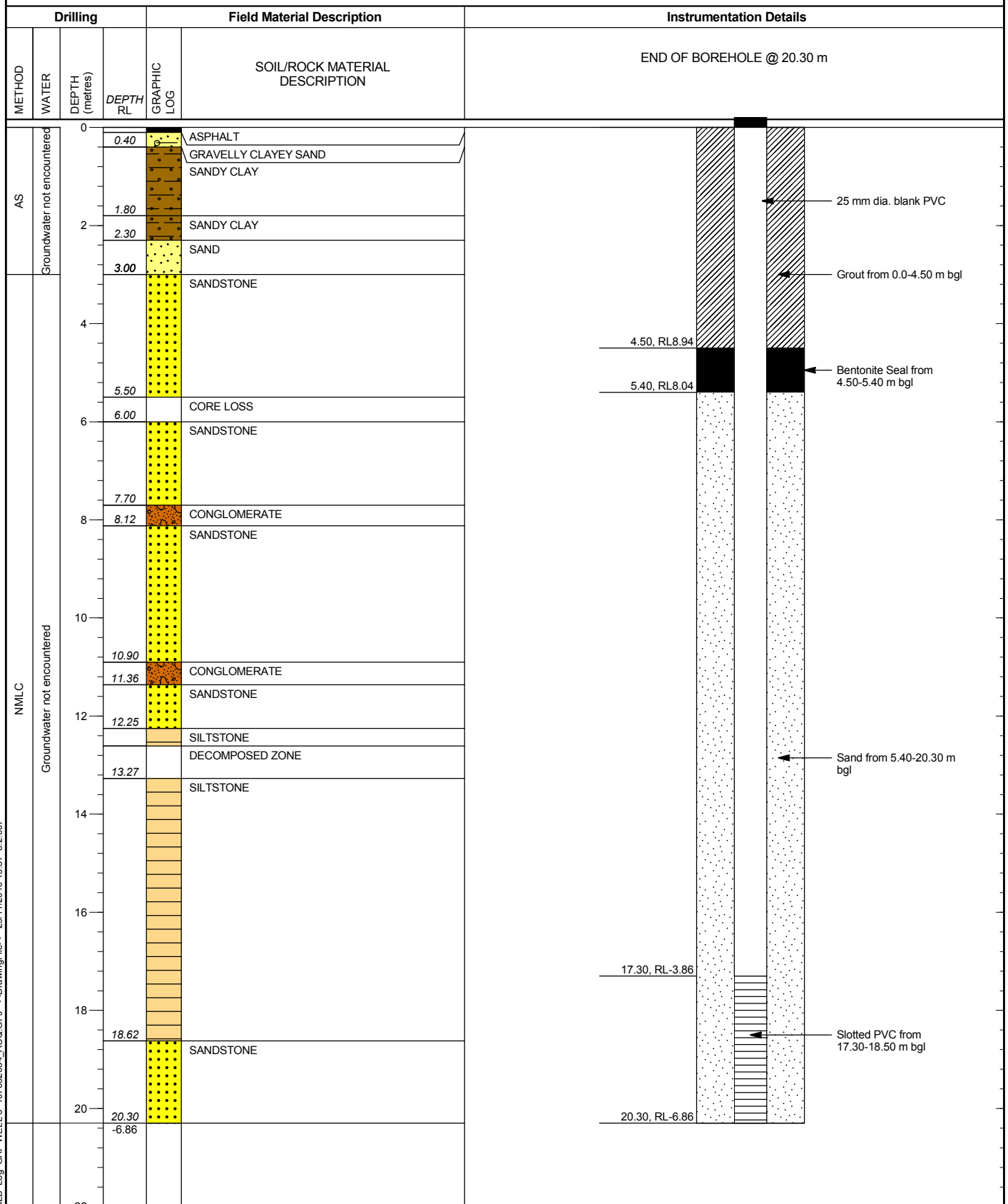
INCLINATION: -90°

LOGGED: RCD DATE: 27/8/10

JOB NO: 107632034

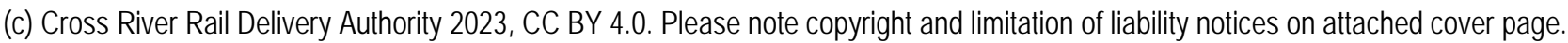
HOLE DEPTH: 20.30 m

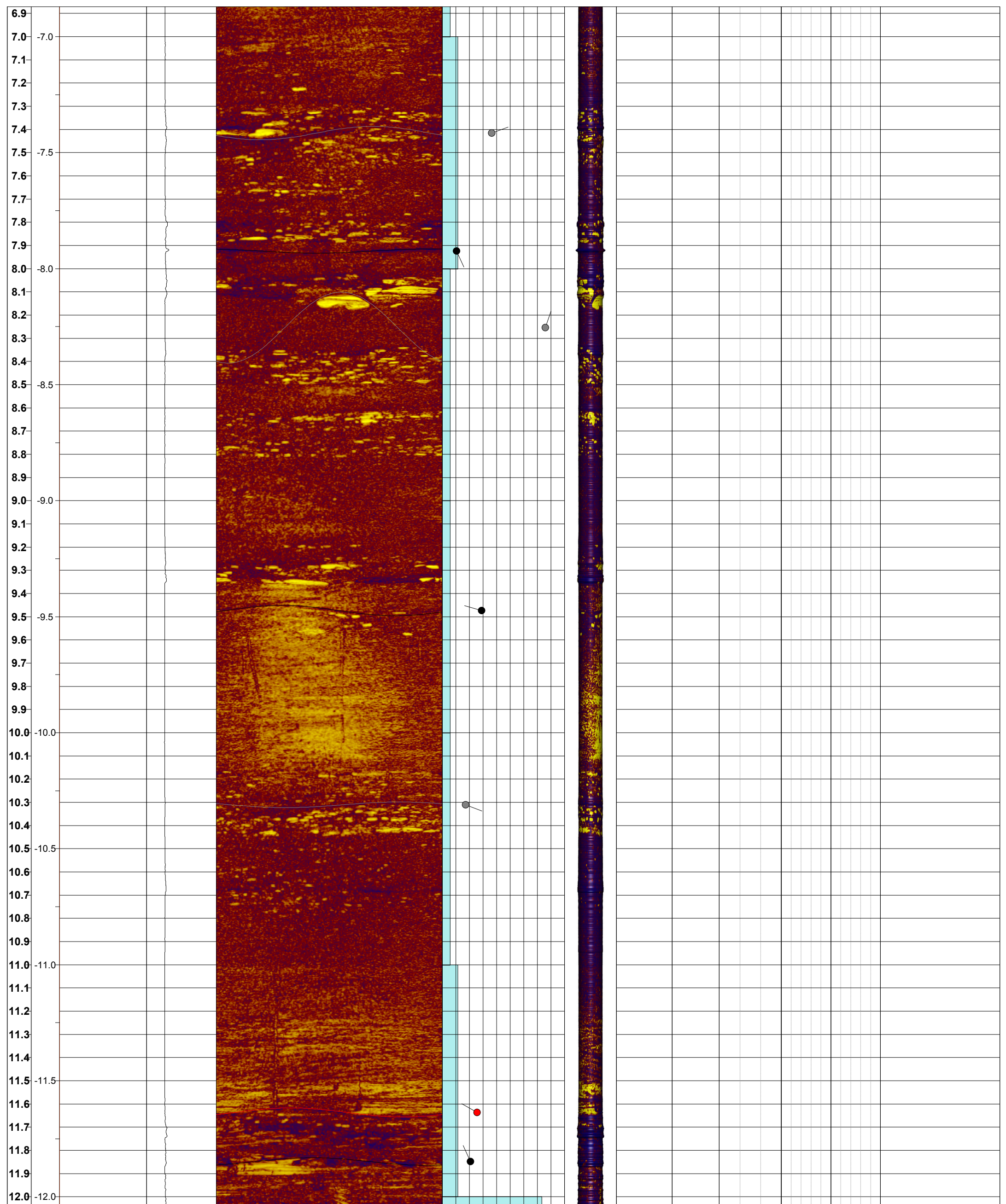
CHECKED: NK DATE: 18/10/10

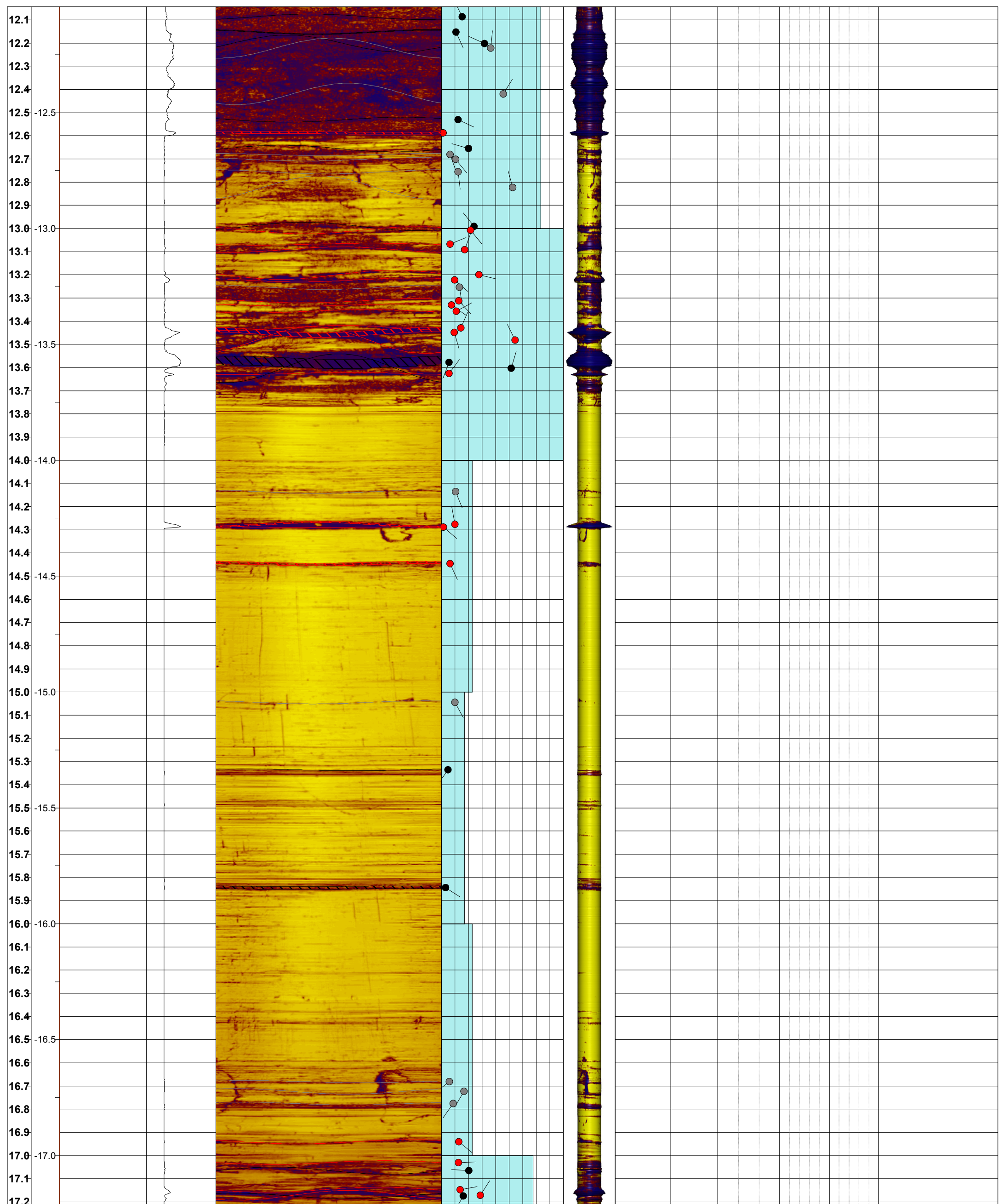


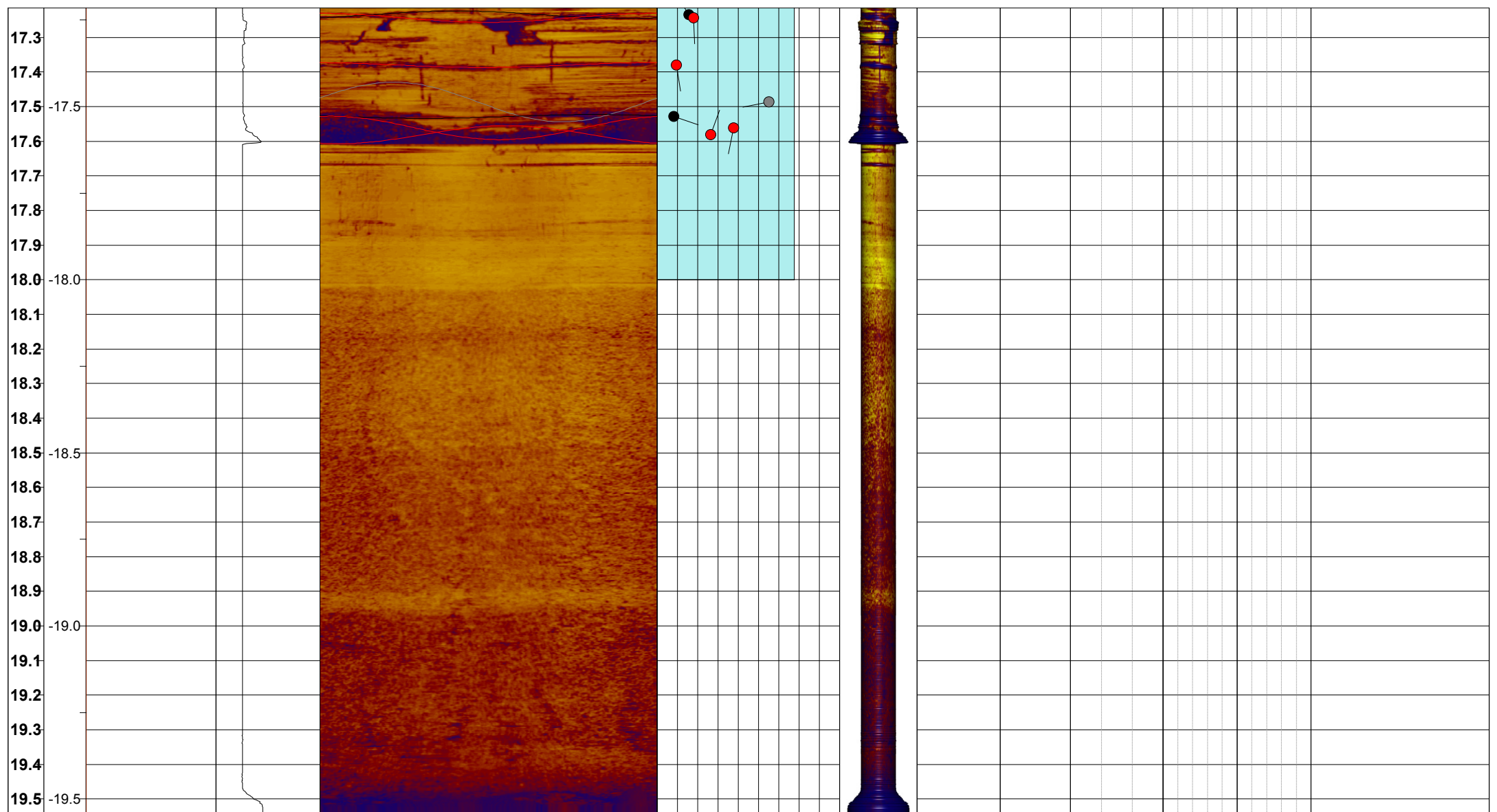
This report of standpipe installation must be read in conjunction with accompanying notes and abbreviations. It has been prepared for geotechnical purposes only, without attempt to assess possible contamination. Any references to potential contamination are for information only and do not necessarily indicate the presence or absence of soil or groundwater contamination.

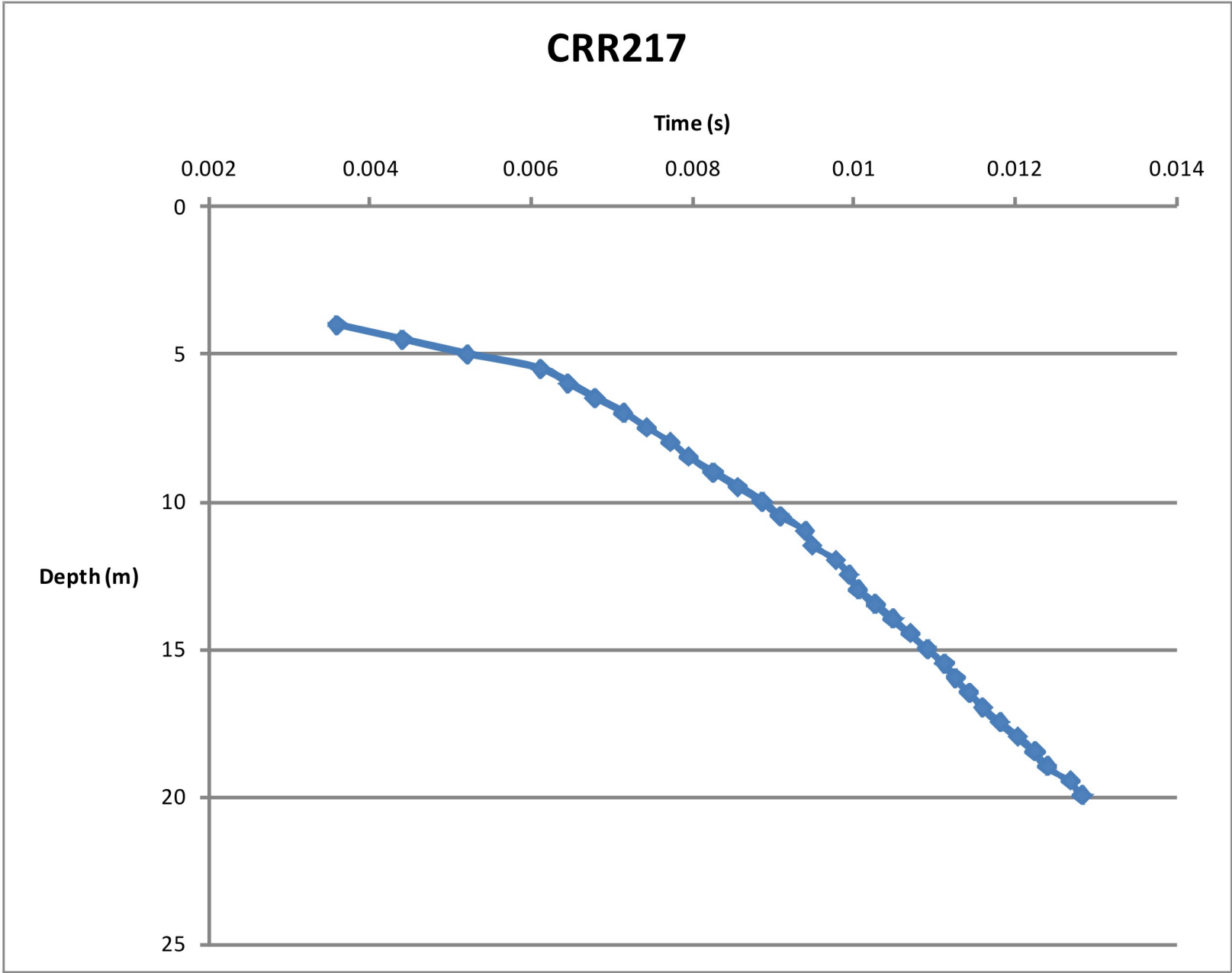
GAP gINT FN. F17
RL1











Note:

* - 1st arrival not clear due to noise

Calculations done without accounting for borehole deviation

Geophone Depth (m)		Interval velocity (P wave m/s)
from	to	
4	4.5	619
4.5	5	619
5	5.5	552
5.5	6	1481
6	6.5	1490
6.5	7	1419
7	7.5	1723
7.5	8	1729
8	8.5	2201
8.5	9	1634
9	9.5	1637
9.5	10	1668
10	10.5	2206
10.5	11	1613
11	11.5	5785
11.5	12	1706
12	12.5	3016
12.5	13	4643
13	13.5	2302
13.5	14	2303
14	14.5	2301
14.5	15	2401
15	15.5	2402
15.5	16	3593
16	16.5	2960
16.5	17	2961
17	17.5	2293
17.5	18	2321
18	18.5	2321
18.5	19	3294
19	19.5	1749
19.5	20	3429



CLIENT Department of Transport and Main Roads		PROJECT Cross River Rail	
DRAWN GDK	DATE OCT 4	TITLE CRR217 VSP	
CHECKED TR	DATE		
SCALE NTS	PROJECT No 000-107632034	FIGURE No	REV No A3