

COPYRIGHT NOTICE

This geotechnical log and its associated data (the Document) is licensed by the Queensland Department of Transport and Main Roads under the [Creative Commons Attribution 4.0 Licence](#) (CC BY 4.0). When reusing the Document, in whole or in part, please attribute the Department as follows: "*(c) State of Queensland (Department of Transport and Main Roads) 2020, licensed under the CC BY 4.0 Licence*". This licence does not apply to the Queensland Government logo or trademarks.

LIMITATION OF LIABILITY

The CC BY 4.0 Licence contains a comprehensive Disclaimer of Warranties and Limitation of Liability. In addition, please note that this Document was prepared for Departmental use only. Reuse of the Document by anyone for any other purpose could result in error and/or loss. You should obtain professional advice before making decisions based on the contents of the Document.

When reproducing any part of this Document, you must also reproduce this limitation of liability notice in addition to the italicised attribution statement above.

Retrieved from the Queensland Geotechnical Database <http://qgd.org.au/>

PROJECT Bruce Highway Upgrade (Cooroy to Curra) Section C
 LOCATION Cut 7 COORDINATES 472548.0 E; 7092424.6 N
 PROJECT No FG5799 SURFACE R.L. 96.30m PLUNGE DATE STARTED 04/08/11 GRID DATUM MGA84
 JOB No 232/10A/2 HEIGHT DATUM AHD BEARING DATE COMPLETED 04/08/11 DRILLER Cairns Drilling Contract

DEPTH (m)	R.L. (m)	AUGER WASH BORING CORE DRILLING	RQD (%)	CORE REC %	SAMPLE	MATERIAL DESCRIPTION	LITHOLOGY	USC WEATHERING	INTACT STRENGTH	DEFECT SPACING (mm)	GRAPHIC LOG	ADDITIONAL DATA AND TEST RESULTS	
												SAMPLES	TESTS
0	96.30												
96.10						TOPSOIL: Sandy CLAY (Residual): Brown, moist, firm.	(CL)						
95.70					A	SANDSTONE (HW): Brown, fine grained.	HW					Based on driller's logs only 10,30,HB N>50	SPT
94.30			(13)			SANDSTONE (MW): Brown, fine to medium grained, massive, medium to high strength, indurated and/or slightly metamorphosed.	MW					J, 40°, Pl, O, Clnf, 20mm Is(50) = 0.08MPa	x
			100 (21)			Defects: -Joint at 15°-20° (2-3/m) -Joint at 35° (3/m) -Joint at 70°-80° (2/m) Defects are close to medium spaced. Defect surfaces are planar, tight, slightly rough, clay infilled, iron stained. Occasional pebbles present.						BZ Clayey Seam	
			100 (31)									J, 55°, Pl, O, Clnf, 10mm J, 50°, Pl, O, Clnf, 10mm J, 60°, Pl, T, Clnf Is(50) = 0.76MPa	x
												J, 60°, Pl, T, Clnf J, 80°, Pl, T, Clnf Conglomeritic Zone, clasts are subrounded, 10mm J, 45°, Pl, T, Clnf J, 60°, Pl, T, Clnf, FeSt QZ, 50°, 20mm	
			100 (52)									Crushed QZ vein, 50° Is(50) = 3.62MPa DD = 2.57t/m ³ , MC = 1.5%; UCS=10.8MPa	x UCS
												QZ, 50°, 30mm Broken QZ Vein	
			100 (23)									J, 10°, Pl, O, SR, Clnf, 5mm J, 50°, QZ infill, 10mm	
												J, 45°, QZ infill, 20mm QZ Vein, 50°, 40mm Clayey BZ J, 55°, Pl, T, R, Clnf J, 70°, Pl, T, SR, Clnf, FeSt	
			100									HF Clayey Zone	

REMARKS _____

LOGGED BY
JA/DC



ENGINEERING BOREHOLE LOG

FOR GEOTECHNICAL TERMS AND
SYMBOLS REFER FORM F:GEOT 017/6-2010

BOREHOLE No BH C20
SHEET 2 of 2
REFERENCE No H11113

PROJECT Bruce Highway Upgrade (Cooroy to Curra) Section C
LOCATION Cut 7 COORDINATES 472548.0 E; 7092424.6 N
PROJECT No FG5799 SURFACE R.L. 96.30m PLUNGE DATE STARTED 04/08/11 GRID DATUM MGA94
JOB No 232/10A/2 HEIGHT DATUM AHD BEARING DATE COMPLETED 04/08/11 DRILLER Cairns Drilling Contract

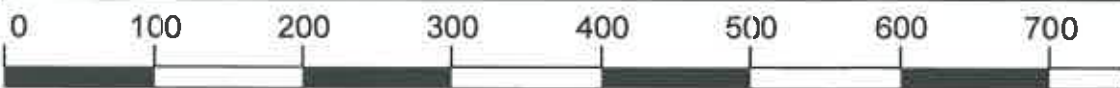
DEPTH (m)	R.L. (m)	ALGER WASH BORING CORE DRILLING	RQD (%)	CORE REC %	SAMPLE	MATERIAL DESCRIPTION	LITHOLOGY	USC	WEATHERING	INTACT STRENGTH					DEFECT SPACING (mm)			GRAPHIC LOG	ADDITIONAL DATA AND TEST RESULTS	SAMPLES TESTS	
										EH	YH	HM	ML	VL	EL	20	60				200
10	86.30					SANDSTONE (MW): Cont'd												Is(50) = 1.99MPa			
11				100	(21)				MW									J, 60°, Pl, O, SR, FeSt Clayey BZ J, 40°, Pl, O, Clnf			
12				100	(27)													Is(50) = 4.55MPa Is(50) = 4.33MPa	x		
13	83.74			100	(22)	ANDESITE (MW): Brown/grey, fine to medium grained, massive, medium to high strength. Defects: -Joint at 20° (3/m) -Joint at 50° (2/m) -Joint at 80° (1/m) Defect spacing is close. Defect surfaces are planar, tight or open, smooth, clay infilled, iron stained.			MW									J, 70°, Pl, SR, Clnf, FeSt J, 80°, Pl, T, SR, Clnf			
14	81.98			100	(30)	SANDSTONE (SW): Grey/brown, medium grained, massive, high strength, indurated and/or slightly metamorphosed. Defects: -Joint at 20° (3/m) -Joint at 50° (2/m) -Joint at 80° (1/m) Defect spacing is medium. Defect surfaces are planar, tight or open, smooth, clay infilled, iron stained.			SW									Is(50) = 2.88MPa		x	
15	80.60																	J, 60°, Pl, O, SR, Clnf, FeSt J, 40°, Pl, T			
16	79.94			100	(53)	ANDESITE (MW): As above except medium strength.			MW									Clayey BZ	Is(50) = 0.36MPa Is(50) = 0.80MPa	x	
17	78.69					SANDSTONE (MW): Brown/grey, medium grained, massive, high strength, indurated and/or slightly metamorphosed. Defects: -Joint at 20° (3/m) -Joint at 50° (2/m) -Joint at 80° (1/m) Defect spacing is medium. Defect surfaces are planar, tight or open, smooth, clay infilled, iron stained.			MW									J, 50°, Pl, T, Clnf, FeSt J, 40°, Pl, O, Clnf, 10mm			
18	77.87			100		ANDESITE (SW): Pale grey, fine to medium grained, massive, very high strength. Defects as above.			SW									QZ Vein J, 40°, Pl, O, SR, Clnf, FeSt Is(50) = 5.75MPa		x	
19						Borehole terminated at 18.43m															
20																					

REMARKS _____

LOGGED BY
JA/DC

CORE PHOTO LOG - BH C20

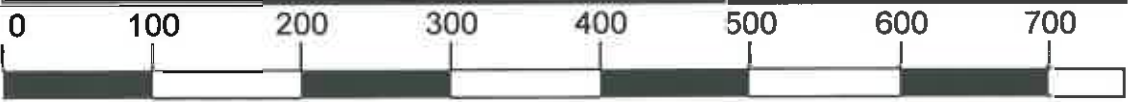
Project Name:	BRUCE HIGHWAY UPGRADE - SECTION C		
Project No.:	FG5799	Date:	06/09/2011
Details:	Cut 7	Start Depth (m):	2.00
Reference No.:	H11113	Finish Depth (m):	18.43



SCALE 1:5

CORE PHOTO LOG - BH C20

Project Name:	BRUCE HIGHWAY UPGRADE - SECTION C		
Project No.:	FG5799	Date:	06/09/2011
Details:	Cut 7	Start Depth (m):	2.00
Reference No.:	H11113	Finish Depth (m):	18.43



SCALE 1:5

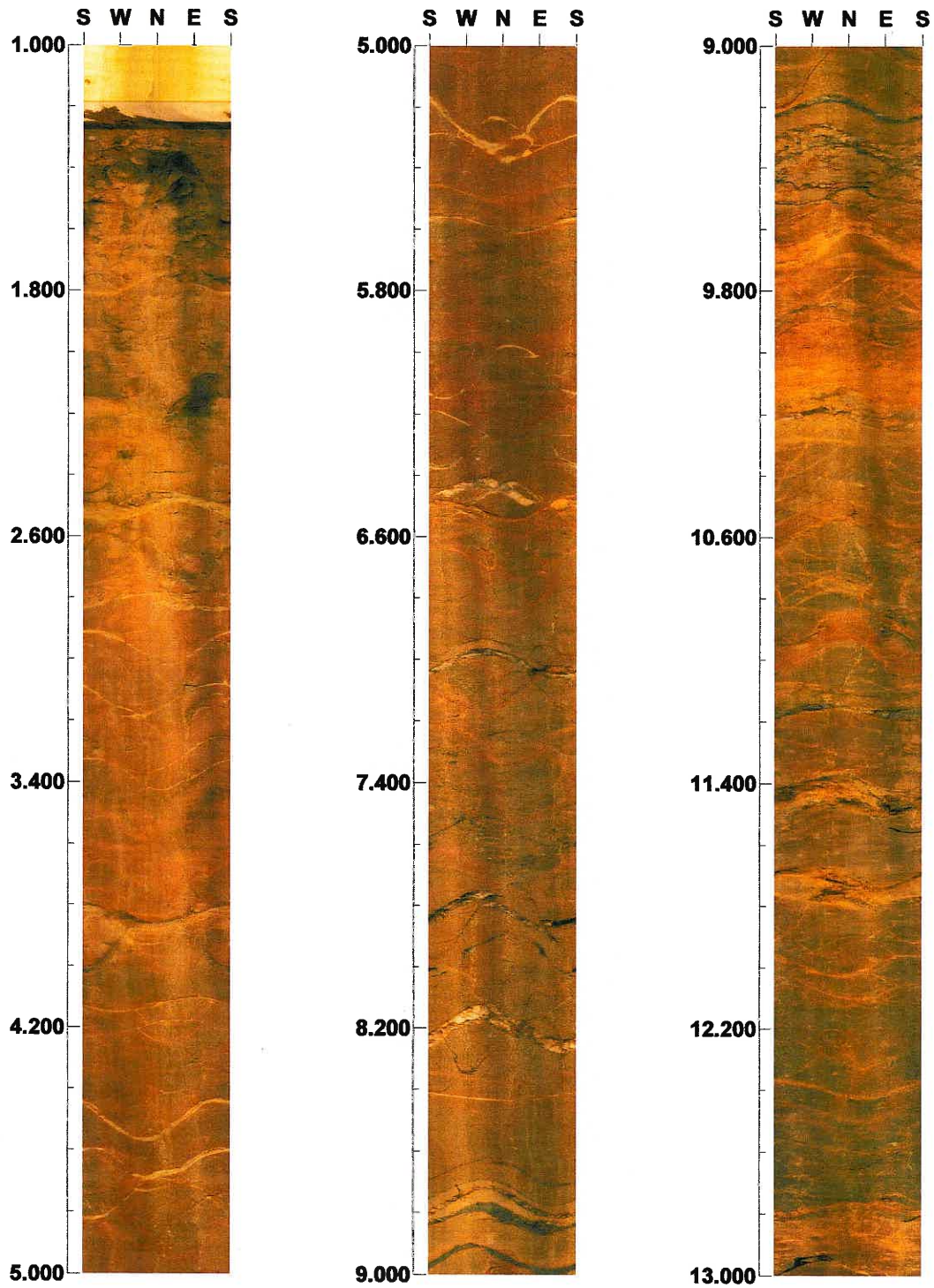
Project name: BRUCE HIGHWAY UPGRADE SECTION C

Bore hole No.: C-20

Azimuth: 0

Inclination: -90

Depth range: 1.000 - 13.000 m



Scale: 1/20

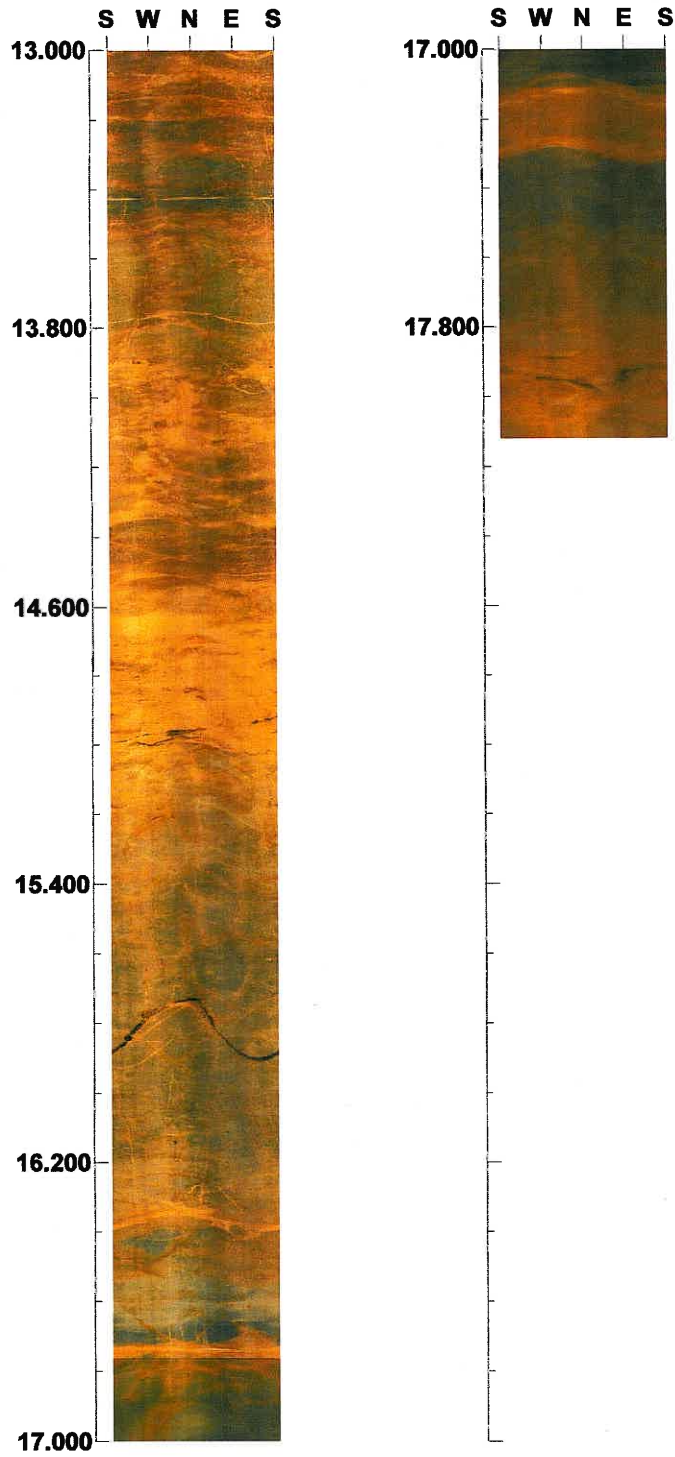
Aspect ratio: 200 %

Project name: BRUCE HIGHWAY UPGRADE SECTION C
Bore hole No.: C-20

Azimuth: 0

Inclination: -90

Depth range: 13.000 - 18.118 m



Scale: 1/20 Aspect ratio: 200 %

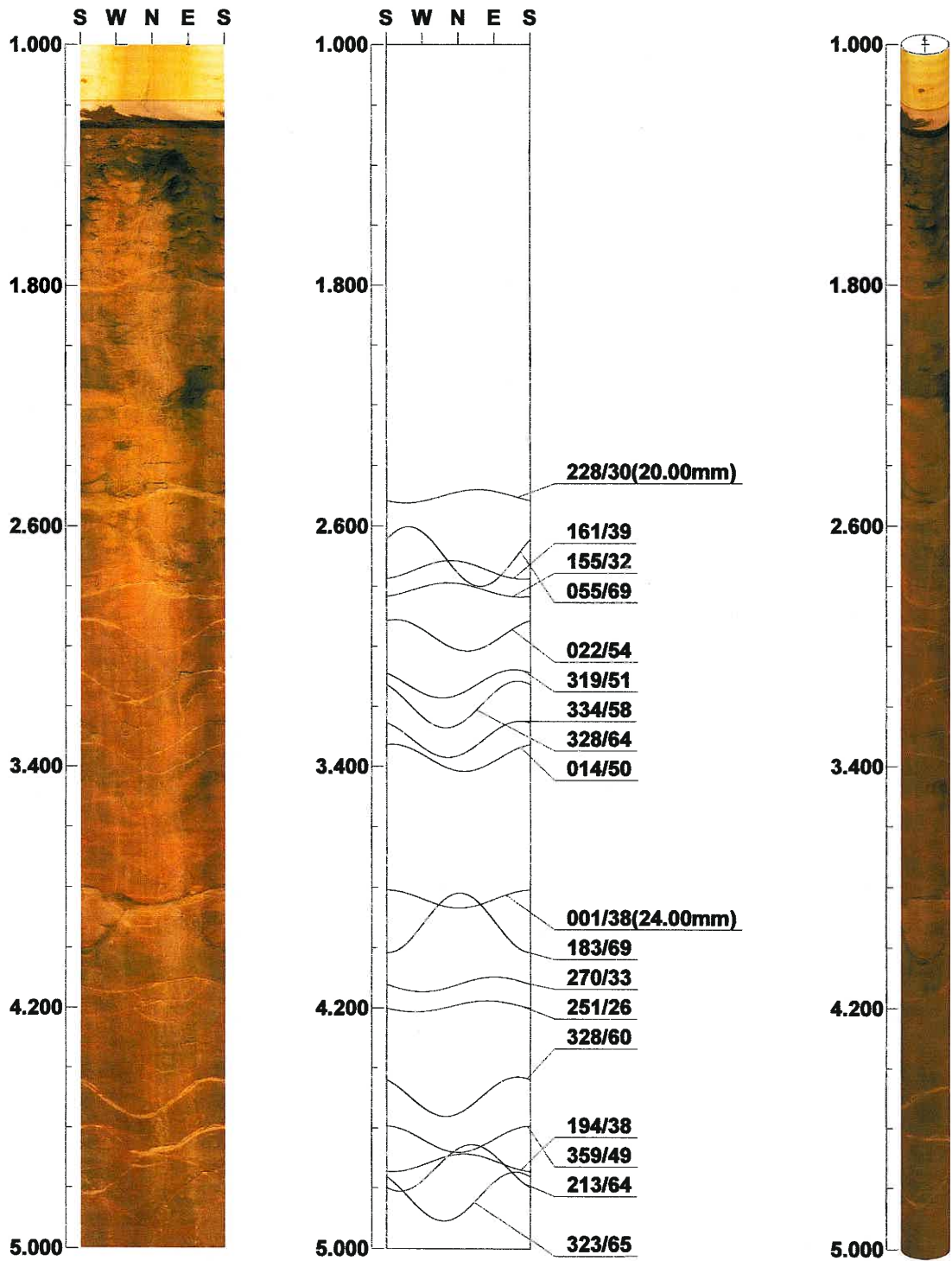
Project name: BRUCE HIGHWAY UPGRADE SECTION C

Bore hole No.: C-20

Azimuth: 0

Inclination: -90

Depth range: 1.000 - 5.000 m



Scale: 1/20

Aspect ratio: 200 %

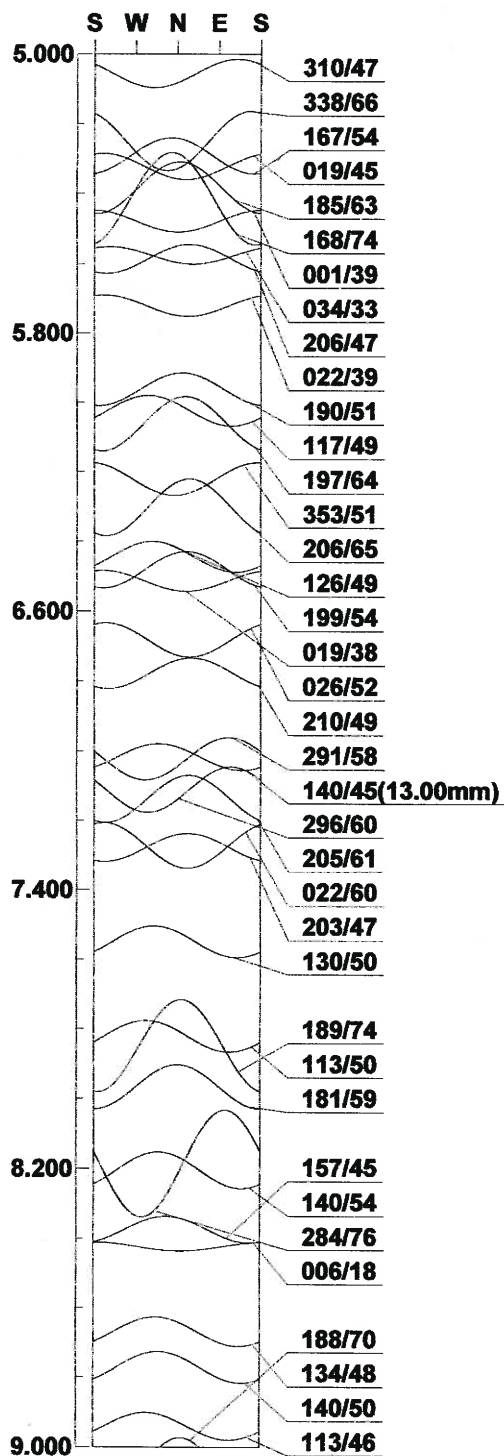
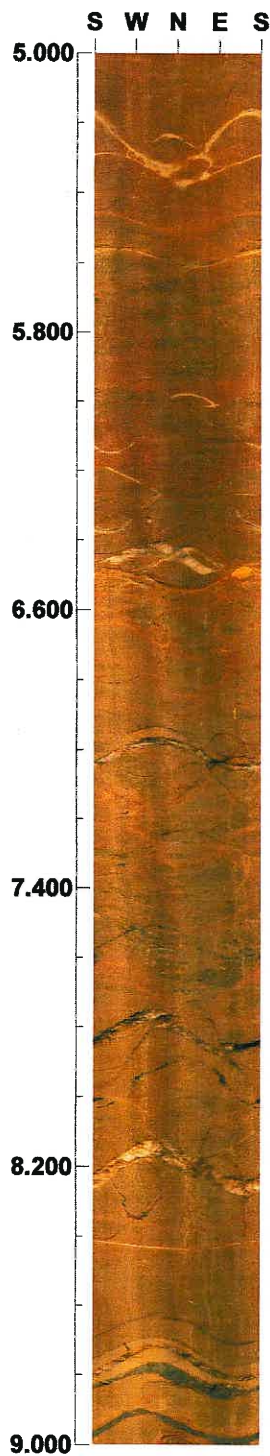
Project name: BRUCE HIGHWAY UPGRADE SECTION C

Bore hole No.: C-20

Azimuth: 0

Inclination: -90

Depth range: 5.000 - 9.000 m



Scale: 1/20

Aspect ratio: 200 %

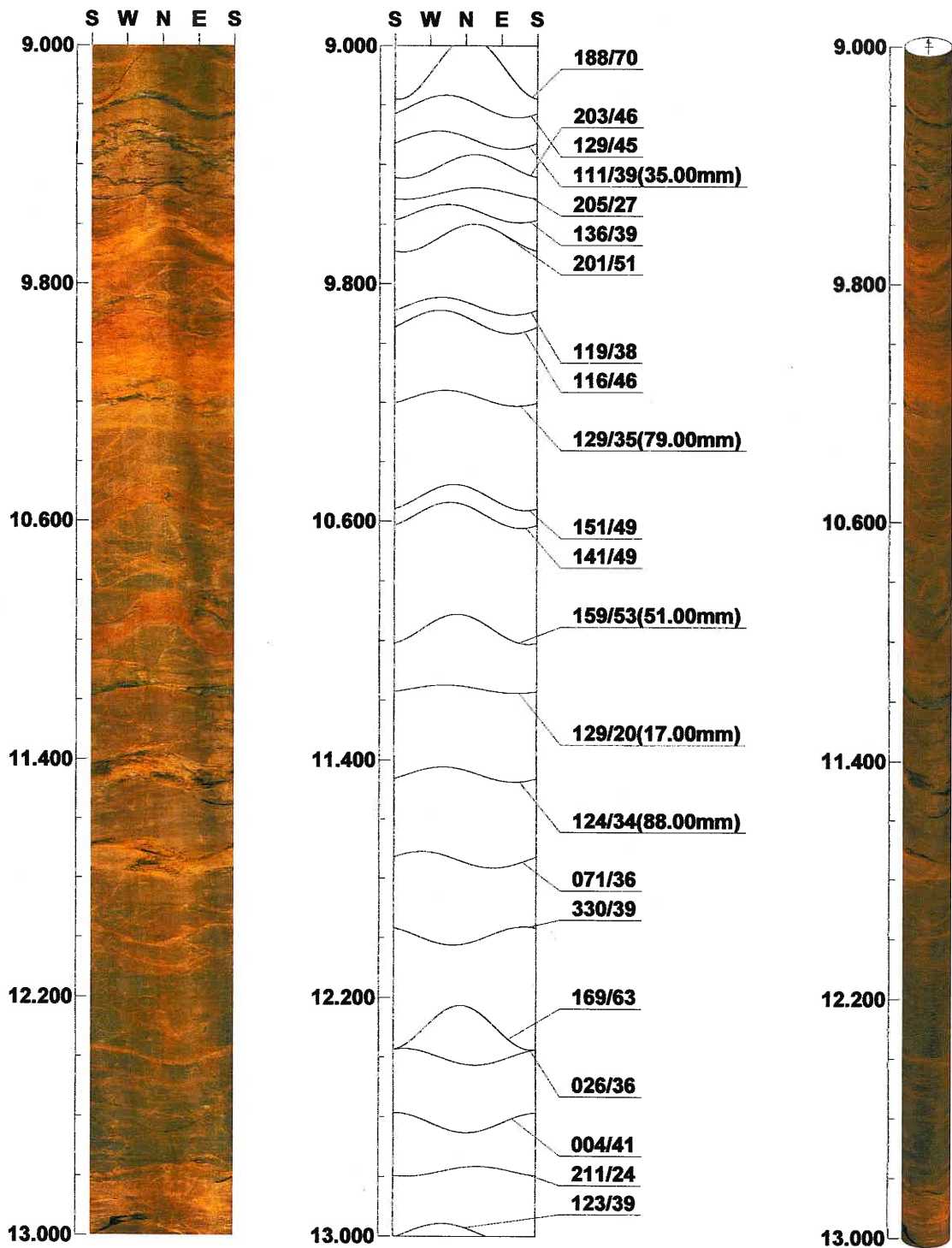
Project name: BRUCE HIGHWAY UPGRADE SECTION C

Bore hole No.: C-20

Azimuth: 0

Inclination: -90

Depth range: 9.000 - 13.000 m



Scale: 1/20

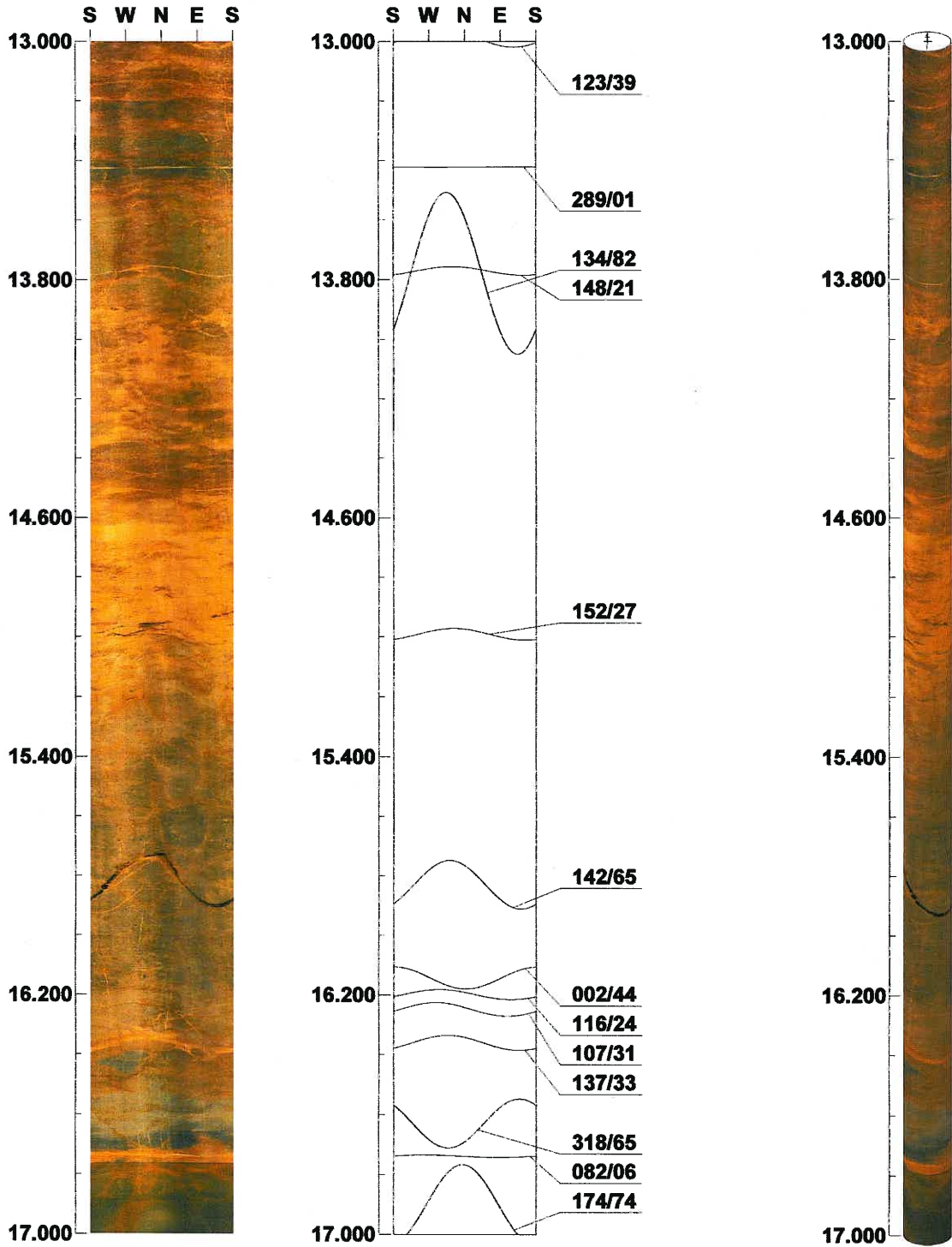
Aspect ratio: 200 %

Project name: BRUCE HIGHWAY UPGRADE SECTION C
Bore hole No.: C-20

Azimuth: 0

Inclination: -90

Depth range: 13.000 - 17.000 m



Scale: 1/20

Aspect ratio: 200 %

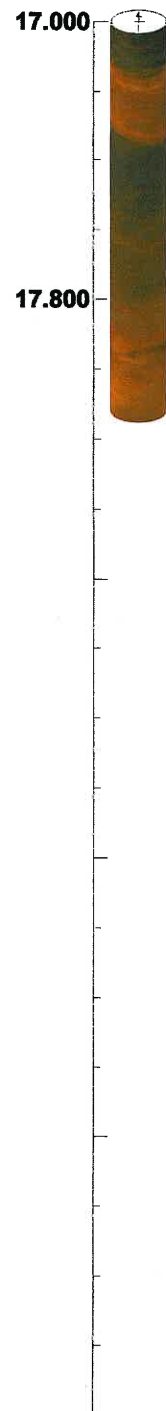
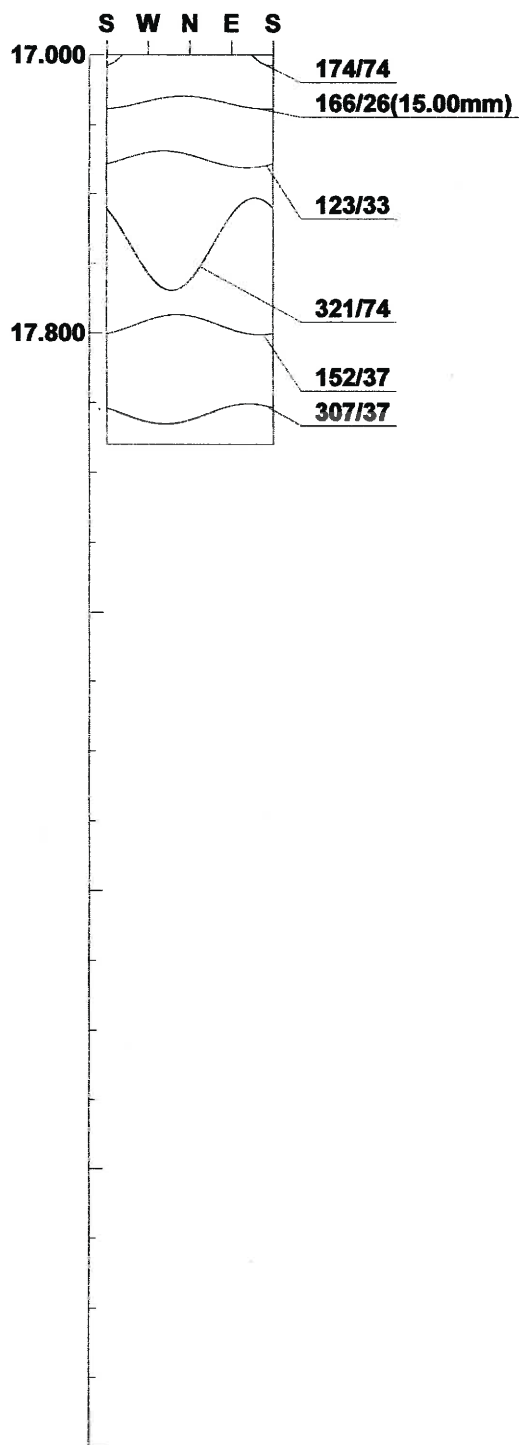
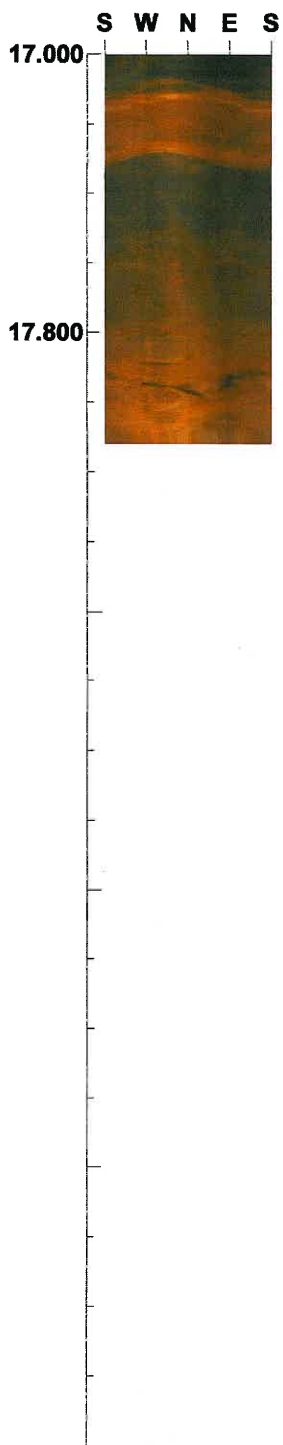
Project name: BRUCE HIGHWAY UPGRADE SECTION C

Bore hole No.: C-20

Azimuth: 0

Inclination: -90

Depth range: 17.000 - 18.118 m



Scale: 1/20

Aspect ratio: 200 %

Tab. Table of Discontinuity (1 / 2)

File name: C-20.STR

[]

No.	Depth (m)	Dir/Dip	Sort	Aperture (mm)	Form	Condition	Remark
1	2.501	228/30	ShearZone	20.0	Planar	Weathered	Open/loose
2	2.701	055/69	Joint	0.5	Planar	Smooth	Open
3	2.745	161/39	Joint	0.3	Planar	Smooth	Open
4	2.812	155/32	Joint	0.5	Planar	Smooth	Open
5	2.963	022/54	Joint	0.5	Planar	Smooth	Open
6	3.124	319/51	Joint	0.5	Planar	Rough	Open
7	3.193	328/64	Joint	0.3	Planar	Rough	Tight/fil'd
8	3.309	334/58	Joint	0.3	Planar	Smooth	Open
9	3.371	014/50	Joint	0.3	Planar	Smooth	Open
10	3.838	000/38	ShearZone	24.0	Planar	Brec/crus'd	Open/loose
11	3.917	183/69	Joint	1.0	Planar	Smooth	Open
12	4.121	270/33	Joint	0.5	Planar	Rough	Open
13	4.194	251/26	Joint	0.3	Planar	Smooth	Tight
14	4.495	328/60	Joint	1.0	Planar	Rough	Open
15	4.637	000/49	Joint	0.5	Planar	Rough	Open
16	4.716	194/38	Joint	0.3	Planar	Smooth	Open
17	4.733	213/64	Joint	0.3	Planar	Rough	Tight/fil'd
18	4.828	323/65	Joint	0.3	Planar	Rough	Tight
19	5.056	310/47	Joint	0.3	Planar	Smooth	Tight
20	5.250	338/66	Joint	1.0	Planar	Rough	Open
21	5.293	167/54	Joint	0.3	Planar	Smooth	Tight
22	5.323	019/45	Joint	0.5	Planar	Rough	Open
23	5.384	185/63	Joint	0.3	Planar	Smooth	Tight
24	5.415	168/74	Joint	0.3	Planar	Smooth	Tight
25	5.480	001/39	Joint	0.3	Planar	Smooth	Tight
26	5.577	034/33	ShearZone	6.0	Planar	Brec/crus'd	Open/loose
27	5.587	206/47	Joint	0.3	Planar	Smooth	Tight
28	5.721	022/39	Joint	0.3	Planar	Smooth	Open
29	5.963	190/51	Joint	0.3	Planar	Smooth	Tight
30	6.025	117/49	Joint	1.0	Planar	Rough	Open/fil'd
31	6.062	197/64	Joint	0.3	Planar	Rough	Open/fil'd
32	6.221	353/51	Joint	0.5	Planar	Smooth	Open/fil'd
33	6.302	206/65	Joint	0.5	Planar	Rough	Open/fil'd
34	6.444	126/49	Vein	19.0	Planar	Rough	Open
35	6.481	199/54	Joint	1.0	Planar	Smooth	Open/fil'd
36	6.513	019/38	ShearZone	5.0	Planar	Brec/crus'd	Open
37	6.682	026/52	Joint	0.5	Planar	Smooth	Open
38	6.777	210/49	Joint	0.3	Planar	Smooth	Tight
39	7.016	140/45	Vein	13.0	Planar	Brec/crus'd	Open/loose
40	7.021	291/58	Joint	0.5	Planar	Smooth	Open
41	7.110	296/60	Joint	0.5	Planar	Smooth	Open
42	7.137	205/61	Joint	0.3	Planar	Rough	Tight
43	7.272	022/60	Joint	0.3	Planar	Rough	Open
44	7.278	203/47	Joint	0.3	Planar	Smooth	Tight
45	7.549	130/50	Joint	0.5	Planar	Smooth	Open
46	7.821	113/50	Vein	12.0	Planar	Brec/crus'd	Open/loose
47	7.848	189/74	Joint	0.3	Planar	Smooth	Tight
48	7.966	180/59	Joint	0.5	Planar	Rough	Open
49	8.185	284/76	Joint	0.5	Undulating	Rough	Open
50	8.204	140/54	Vein	30.0	Planar	Brec/crus'd	Open/loose

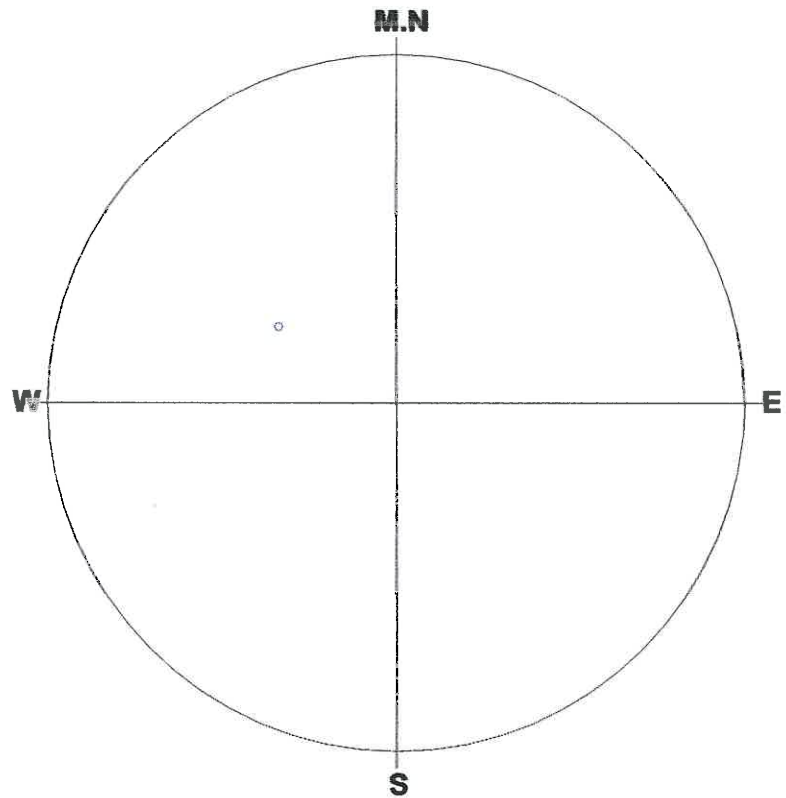
Tab. Table of Discontinuity (2 / 2)

File name: C-20.STR

[]

No.	Depth (m)	Dir/Dip	Sort	Aperture (mm)	Form	Condition	Remark
51	8.374	157/45	Joint	0.3	Planar	Rough	Tight
52	8.423	006/18	Joint	0.5	Planar	Smooth	Open/fil'd
53	8.669	134/48	Joint	1.0	Planar	Smooth	Open
54	8.772	140/50	Vein	15.0	Planar	Brec/crus'd	Open/loose
55	8.941	113/46	Mineralband	12.0	Planar	Brec/crus'd	Open
56	9.078	188/70	Joint	1.0	Planar	Rough	Open
57	9.206	129/45	Vein	11.0	Planar	Brec/crus'd	Open/loose
58	9.319	111/39	Vein	35.0	Planar	Brec/crus'd	Open/loose
59	9.407	203/46	Joint	0.5	Planar	Rough	Open
60	9.497	205/27	Joint	2.0	Stepped	Brec/crus'd	Open/loose
61	9.564	136/39	Joint	0.3	Planar	Smooth	Open
62	9.646	201/51	ShearZone	20.0	Planar	Brec/crus'd	Open
63	9.875	119/38	Joint	5.0	Planar	Miner'l'zd	Open/fil'd
64	9.928	116/46	Joint	1.0	Planar	Brec/crus'd	Open
65	10.185	129/35	ShearZone	79.0	Planar	Brec/crus'd	Open/loose
66	10.520	151/49	Joint	0.5	Planar	Smooth	Open
67	10.580	141/49	ShearZone	10.0	Planar	Brec/crus'd	Open
68	10.961	159/53	ShearZone	51.0	Planar	Brec/crus'd	Open
69	11.162	129/20	Vein	17.0	Planar	Brec/crus'd	Open/loose
70	11.448	124/34	ShearZone	88.0	Planar	Brec/crus'd	Open/loose
71	11.737	071/36	ShearZone	43.0	Planar	Brec/crus'd	Open/loose
72	11.993	330/39	Joint	3.0	Planar	Brec/crus'd	Open
73	12.300	169/63	Joint	0.3	Planar	Rough	Tight
74	12.398	026/36	Joint	2.0	Planar	Brec/crus'd	Open
75	12.619	004/41	Joint	0.5	Planar	Rough	Open
76	12.781	211/24	ShearZone	5.0	Planar	Brec/crus'd	Open
77	12.988	123/39	Joint	4.0	Planar	Brec/crus'd	Open
78	13.423	289/01	Joint	2.0	Planar	Smooth	Open/fil'd
79	13.771	148/21	Joint	3.0	Planar	Offset	Open/fil'd
80	13.779	134/82	Joint	0.5	Undulating	Rough	Tight/fil'd
81	14.991	152/27	ShearZone	29.0	Planar	Brec/crus'd	Open/loose
82	15.829	142/65	Joint	2.0	Planar	Smooth	Open/loose
83	16.142	002/44	Joint	0.3	Planar	Smooth	Open
84	16.198	116/24	Joint	0.5	Planar	Smooth	Open/fil'd
85	16.248	107/31	Joint	0.5	Planar	Smooth	Open/fil'd
86	16.360	137/33	ShearZone	16.0	Planar	Brec/crus'd	Open
87	16.628	318/65	Joint	0.5	Planar	Rough	Open
88	16.737	082/06	ShearZone	9.0	Planar	Brec/crus'd	Open/fil'd
89	16.898	174/74	Joint	0.5	Planar	Smooth	Tight/fil'd
90	17.136	166/26	ShearZone	15.0	Planar	Brec/crus'd	Open
91	17.300	123/33	Foliation	0.0	Planar	Smooth	Tight
92	17.546	321/74	Joint	0.5	Planar	Rough	Open
93	17.777	152/37	Joint	0.5	Planar	Rough	Open
94	18.032	307/37	ShearZone	21.0	Undulating	Brec/crus'd	Open

C-20.STR
<<FOLIATION>>



Number of Data : 1/94

<Legend>

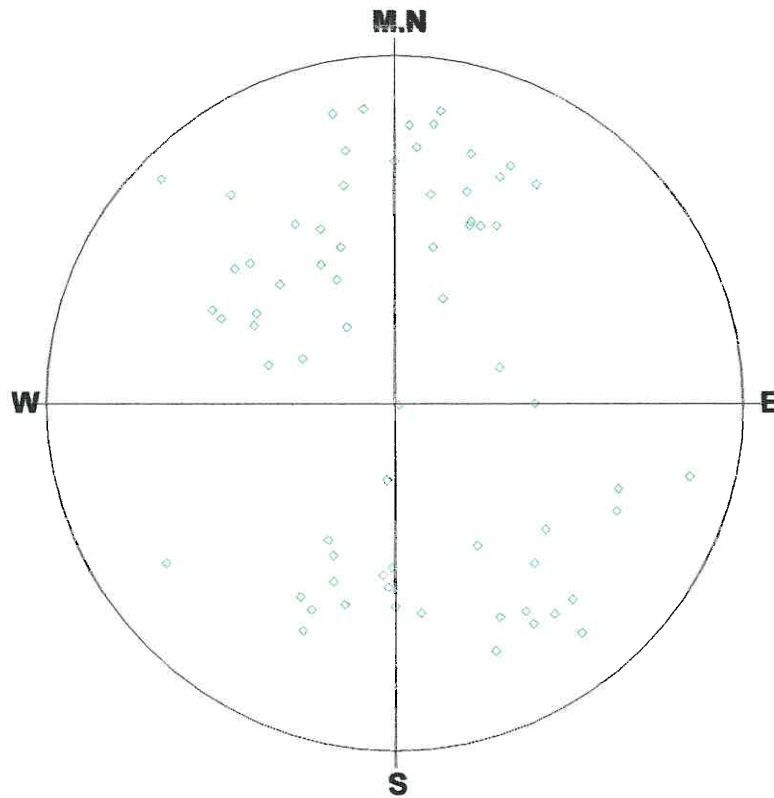
- | | | | | |
|--------------|----|---|---------------|---|
| ○:Foliation | -- | 1 | +:Mineralbar- | 0 |
| ◇:Joint | -- | 0 | | |
| □:Parting | -- | 0 | | |
| △:Fault | -- | 0 | | |
| ▽:ShearZone- | -- | 0 | | |
| ×:Vein | -- | 0 | | |

Schmidt (L.H)

Depth : 2.501 - 18.032 m

Aperture : 0.0 - 88.0 mm

C-20.STR
<<JOINT>>



Number of Data : 68/94

<Legend>

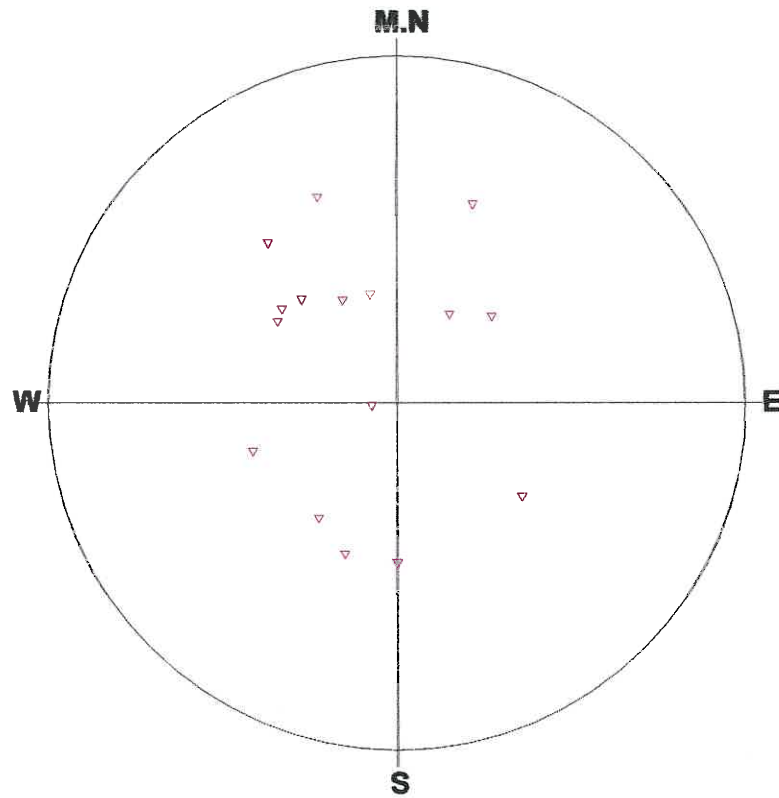
- | | | | | |
|-------------|----|----|---------------|---|
| ○:Foliation | -- | 0 | +:Mineralban- | 0 |
| ◇:Joint | -- | 68 | | |
| □:Parting | -- | 0 | | |
| △:Fault | -- | 0 | | |
| ▽:ShearZone | -- | 0 | | |
| ×:Vein | -- | 0 | | |

Schmidt (L.H)

Depth : 2.501 - 18.032 m

Aperture : 0.0 - 88.0 mm

C-20.STR
<<SHEAR ZONE>>



Number of Data : 16/94

<Legend>

- | | | | |
|-------------|------|----------------|---|
| ○:Foliation | -- 0 | + :Mineralbar- | 0 |
| ◇:Joint | -- 0 | | |
| □:Parting | -- 0 | | |
| △:Fault | -- 0 | | |
| ▽:ShearZone | 16 | | |
| ×:Vein | -- 0 | | |

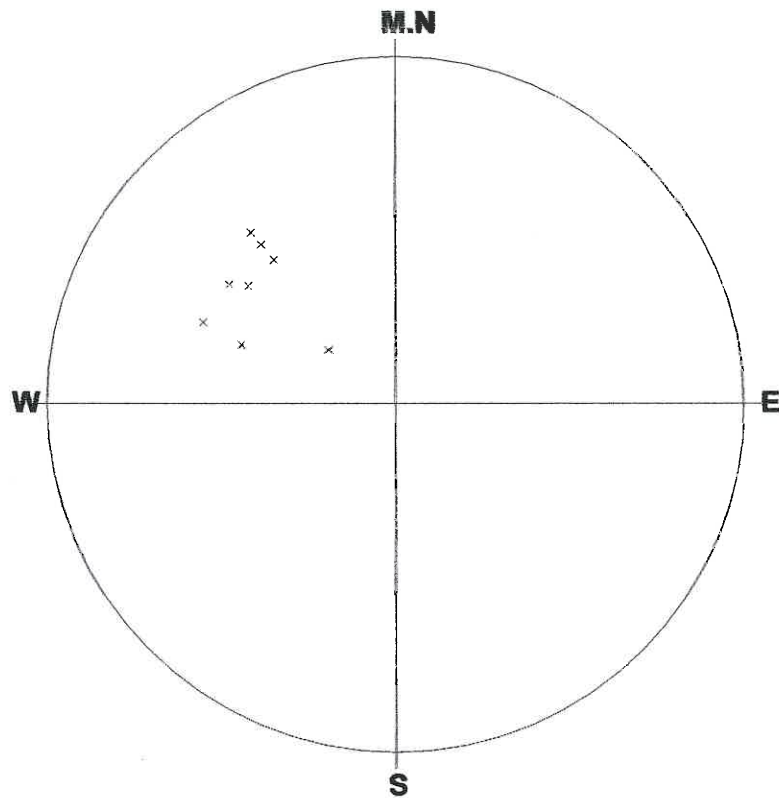
Schmidt (L.H)

Depth : 2.501 - 18.032 m

Aperture : 0.0 - 88.0 mm

C-20.STR

<<VEIN>>



Number of Data : 8/94

<Legend>

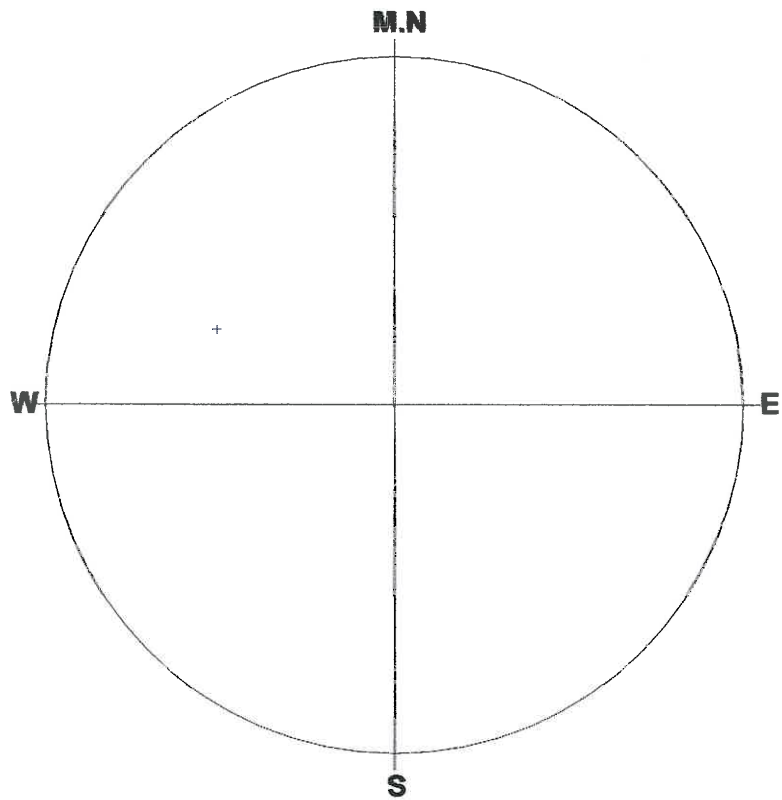
- | | | | | |
|--------------|----|---|---------------|---|
| ○:Foliation | -- | 0 | +:Mineralban- | 0 |
| ◇:Joint | -- | 0 | | |
| □:Parting | -- | 0 | | |
| △:Fault | -- | 0 | | |
| ▽:ShearZone- | | 0 | | |
| ×:Vein | -- | 8 | | |

Schmidt (L.H)

Depth : 2.501 - 18.032 m

Aperture : 0.0 - 88.0 mm

C-20.STR
<<MINERAL BAND>>



Number of Data : 1/94

<Legend>

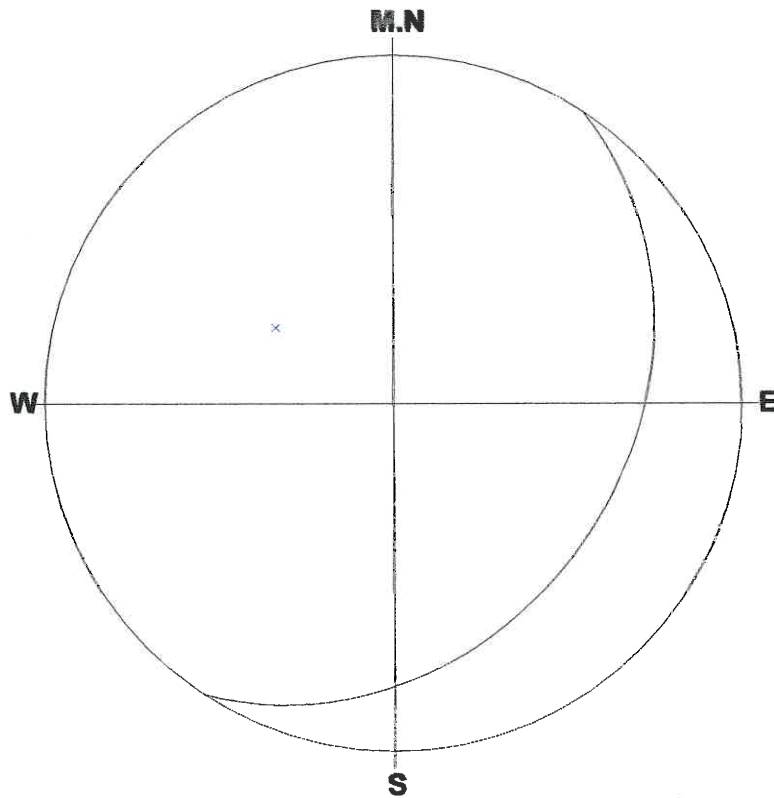
- | | | | | |
|--------------|----|---|----------------|---|
| ○:Foliation | -- | 0 | + :Mineralban- | 1 |
| ◇:Joint | -- | 0 | | |
| □:Parting | -- | 0 | | |
| △:Fault | -- | 0 | | |
| ▽:ShearZone- | -- | 0 | | |
| ×:Vein | -- | 0 | | |

Schmidt (L.H)

Depth : 2.501 - 18.032 m

Aperture : 0.0 - 88.0 mm

C-20.STR
<<FOLIATION>>



Number of Data:1/94

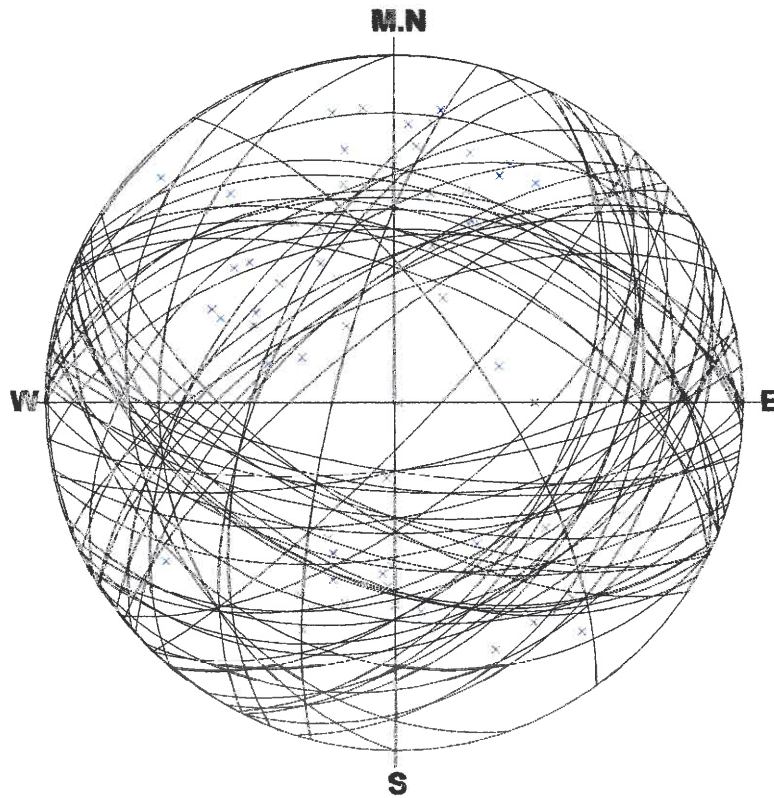
1 : 123/33(91)

Schmidt (L.H)

Depth : 2.501 - 18.032 m

Aperture : 0.0 - 88.0 mm

C-20.STR
<<JOINT>>



Number of Data:68/94

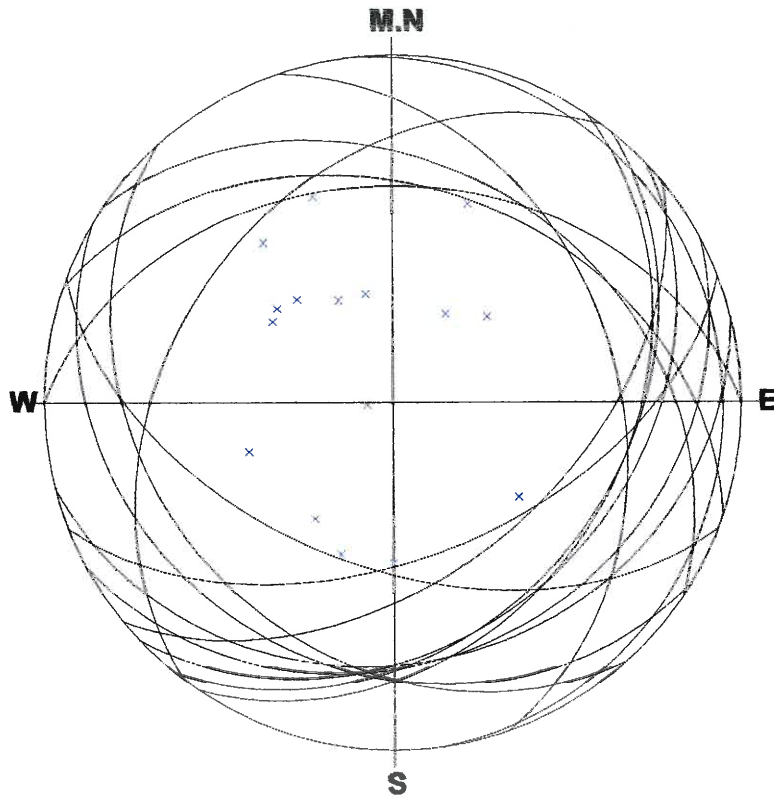
- | | |
|----------------------|------------------------|
| 1 : 055/69(2) | 6 : 328/64(7) |
| 2 : 161/39(3) | 7 : 334/58(8) |
| 3 : 155/32(4) | 8 : 014/50(9) |
| 4 : 022/54(5) | 9 : 183/69(11) |
| 5 : 319/51(6) | 10 : 270/33(12) |

Schmidt (L.H)

Depth : 2.501 - 18.032 m

Aperture : 0.0 - 88.0 mm

C-20.STR
<<SHEAR ZONE>>



Number of Data:16/94

1 : 228/30(1)	6 : 129/35(65)
2 : 000/38(10)	7 : 141/49(67)
3 : 034/33(26)	8 : 159/53(68)
4 : 019/38(36)	9 : 124/34(70)
5 : 201/51(62)	10 : 071/36(71)

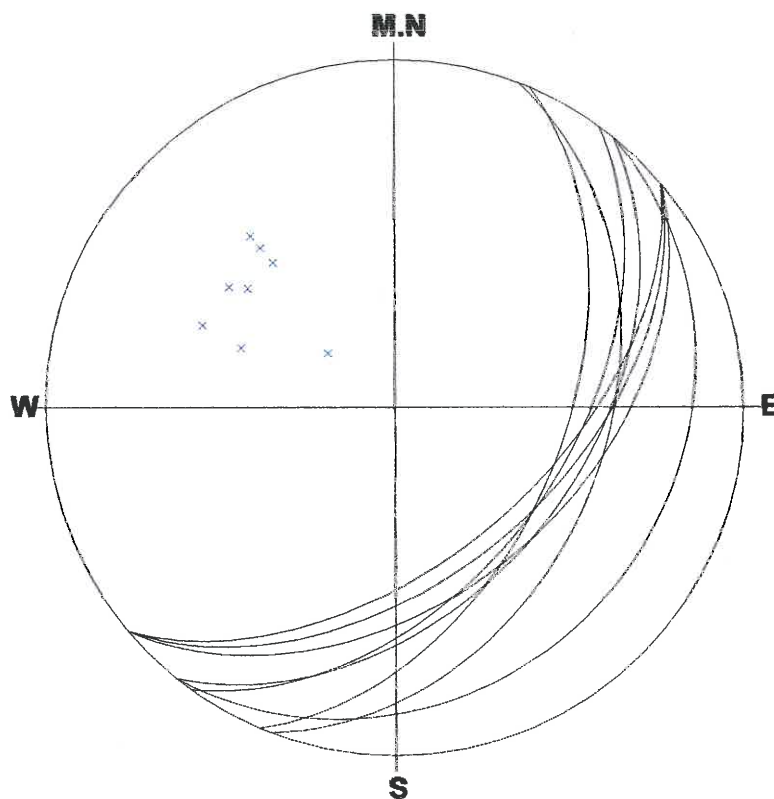
Schmidt (L.H)

Depth : 2.501 - 18.032 m

Aperture : 0.0 - 88.0 mm

C-20.STR

<<VEIN>>



Number of Data:8/94

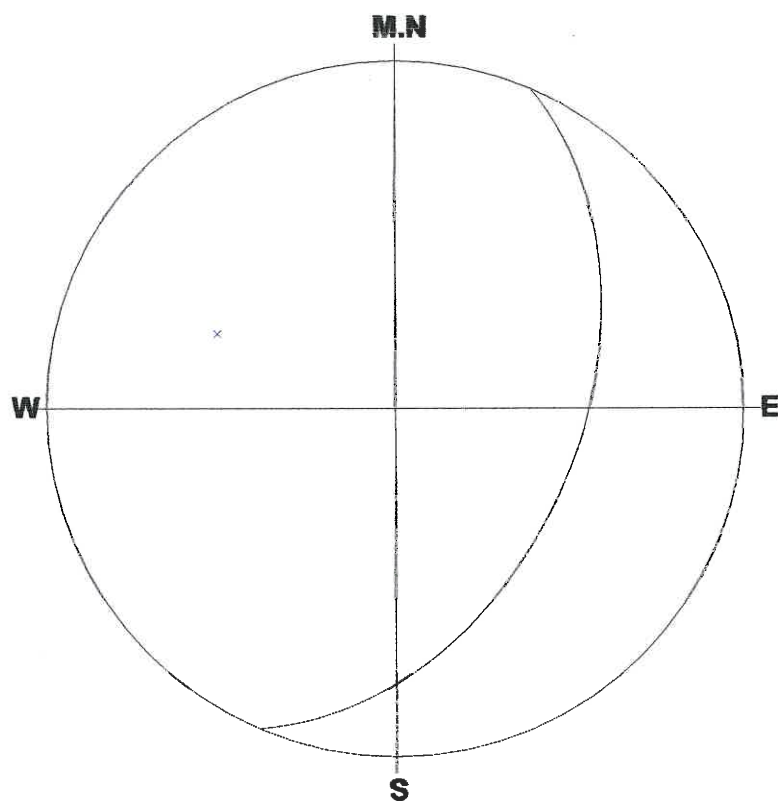
- | | |
|-----------------------|-----------------------|
| 1 : 126/49(34) | 6 : 129/45(57) |
| 2 : 140/45(39) | 7 : 111/39(58) |
| 3 : 113/50(46) | 8 : 129/20(69) |
| 4 : 140/54(50) | |
| 5 : 140/50(54) | |

Schmidt (L.H)

Depth : 2.501 - 18.032 m

Aperture : 0.0 - 88.0 mm

C-20.STR
<<MINERAL BAND>>



Number of Data:1/94

1 : 113/46(55)

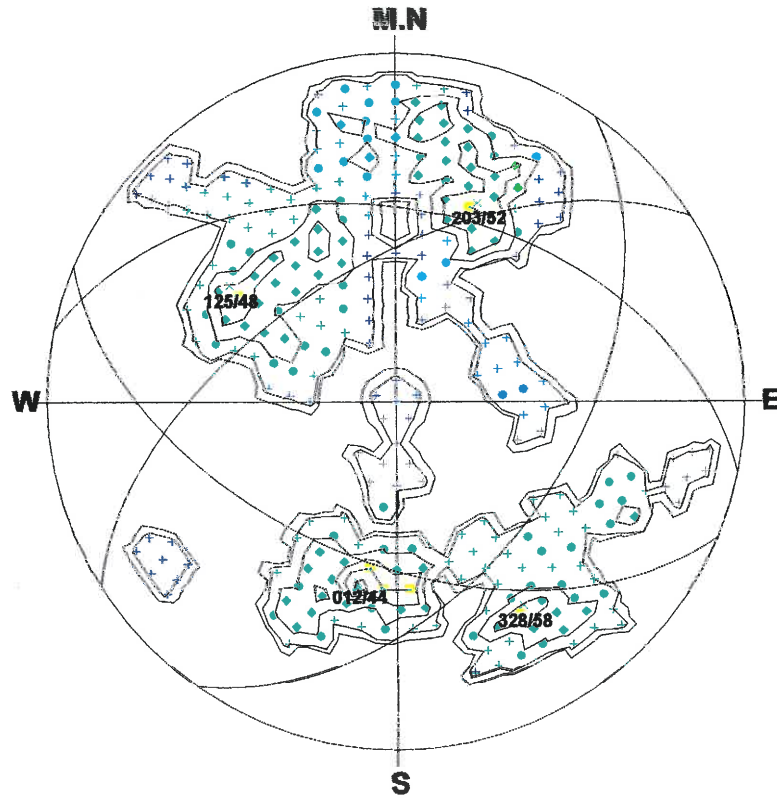
Schmidt (L.H)

Depth : 2.501 - 18.032 m

Aperture : 0.0 - 88.0 mm

C-20.STR
 <<JOINT>>

***** % Diagram *****



Number of Data : 68

<Legend> Sym. (%)	Contour Value (%)
▲ : 10	Contour 1 : 0
▼ : 8 - 10	Contour 2 : 2
■ : 6 - 8	Contour 3 : 4
◆ : 4 - 6	Contour 4 : 6
● : 2 - 4	Contour 5 : 8
⊕ : 0 - 2	Contour 6 : 10

Schmidt (L.H)

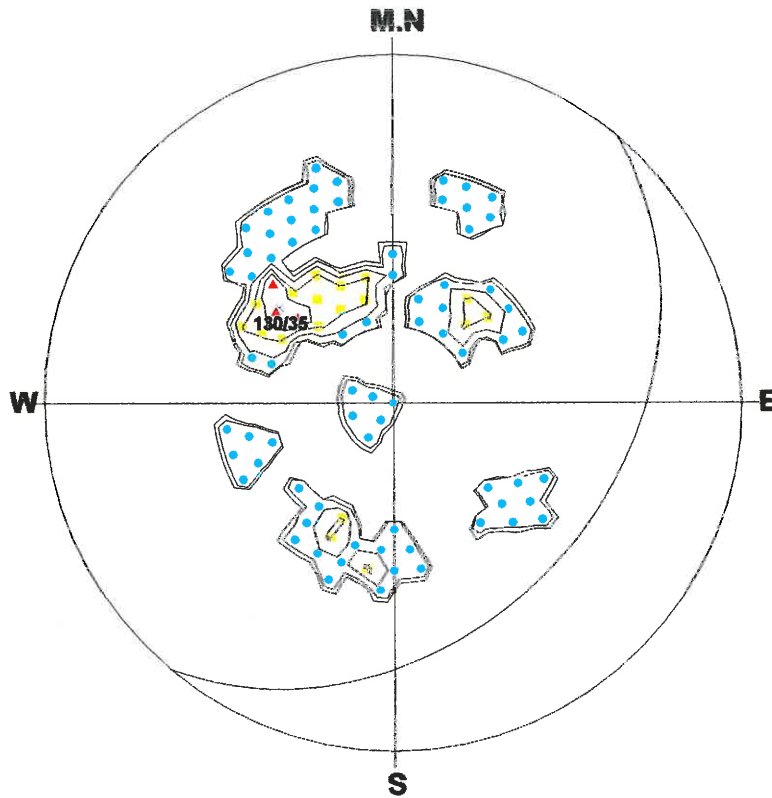
Depth : 2.501 - 18.032 m

Aperture : 0.0 - 88.0 mm

C-20.STR

<<SHEAR ZONE>>

***** % Diagram *****



Number of Data : 16

<Legend> Sym. (%)

- ▲ : 18**
- ▼ : 15 - 18**
- : 11 - 15**
- ◆ : 7 - 11**
- : 3 - 7**
- ⊕ : 0 - 3**

Contour Value (%)

- Contour 1 : 0**
- Contour 2 : 3**
- Contour 3 : 7**
- Contour 4 : 11**
- Contour 5 : 15**
- Contour 6 : 18**

Schmidt (L.H)

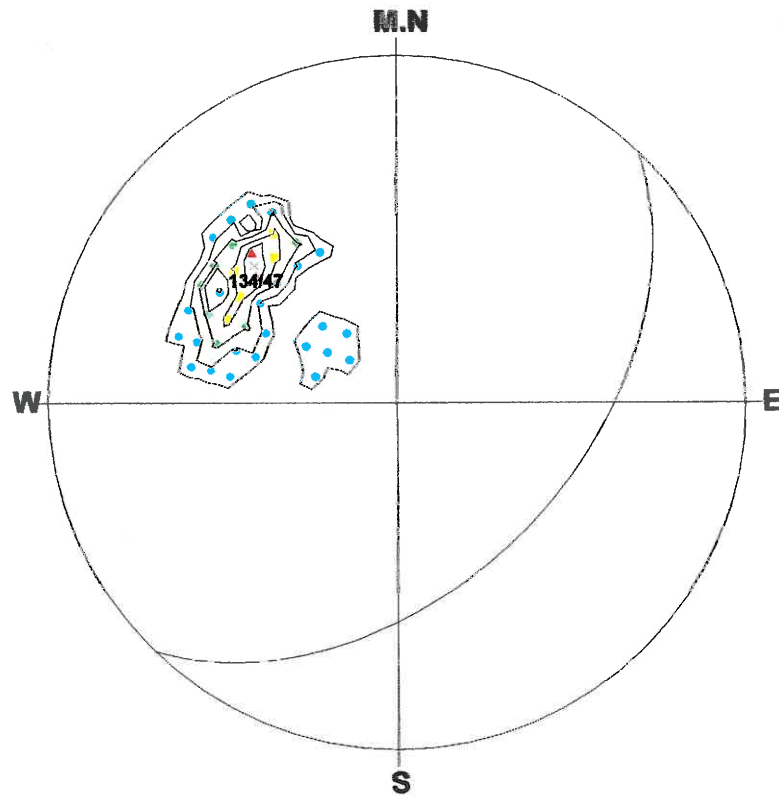
Depth : 2.501 - 18.032 m

Aperture : 0.0 - 88.0 mm

C-20.STR

<<VEIN>>

***** % Diagram *****



Number of Data : 8

<Legend> Sym. (%)

- ▲ : 50
- ▼ : 40 - 50
- : 30 - 40
- ◆ : 20 - 30
- : 10 - 20
- ⊕ : 0 - 10

Contour Value (%)

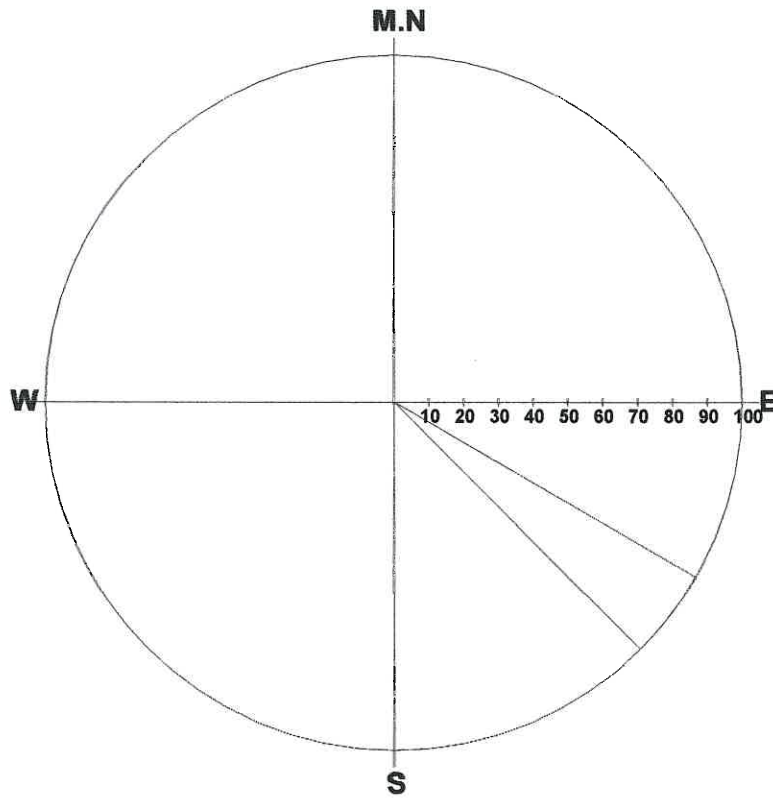
- Contour 1 : 0
- Contour 2 : 10
- Contour 3 : 20
- Contour 4 : 30
- Contour 5 : 40
- Contour 6 : 50

Schmidt (L.H)

Depth : 2.501 - 18.032 m

Aperture : 0.0 - 88.0 mm

C-20.STR
<<FOLIATION>>



Number of Data : 1/94

Max : 100.0%

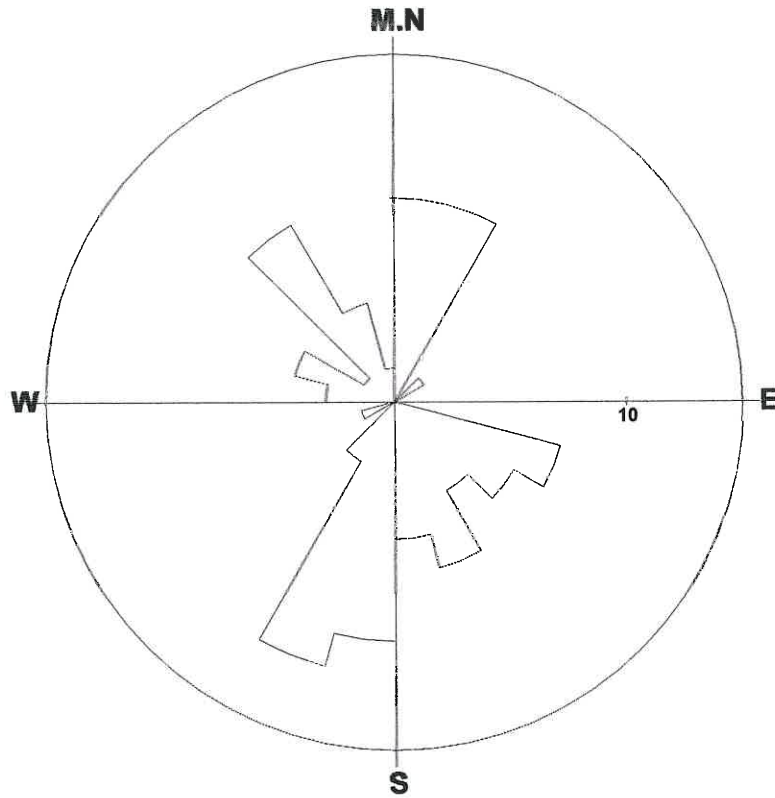
Grouping Angle : 15 deg

Dir	%	Dir	%	Dir	%
0-	0	135-	0	270-	0
15-	0	150-	0	285-	0
30-	0	165-	0	300-	0
45-	0	180-	0	315-	0
60-	0	195-	0	330-	0
75-	0	210-	0	345-	0
90-	0	225-	0		
105-	0	240-	0		
120-	100	255-	0		

Depth : 2.501 - 18.032 m

Aperture : 0.0 - 88.0 mm

C-20.STR
<<JOINT>>



Number of Data : 68/94

Max : 11.8%

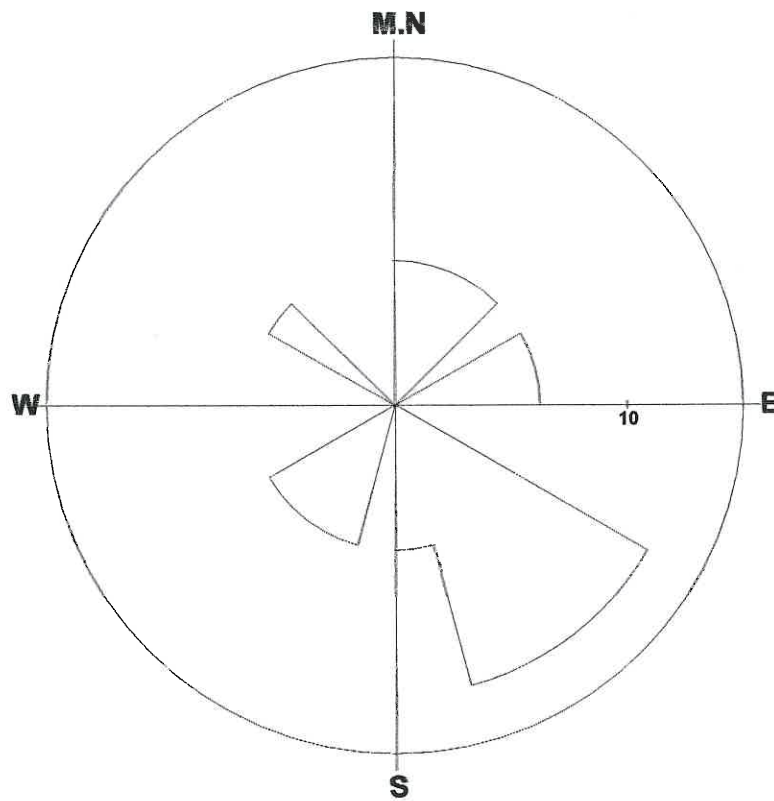
Grouping Angle : 15 deg

Dir	%	Dir	%	Dir	%
0-	9	135-	4	270-	3
15-	9	150-	7	285-	4
30-	0	165-	6	300-	1
45-	1	180-	10	315-	9
60-	0	195-	12	330-	4
75-	0	210-	3	345-	1
90-	0	225-	0		
105-	7	240-	1		
120-	6	255-	0		

Depth : 2.501 - 18.032 m

Aperture : 0.0 - 88.0 mm

C-20.STR
<<SHEAR ZONE>>



Number of Data : 16/94

Max : 12.5%

Grouping Angle : 15 deg

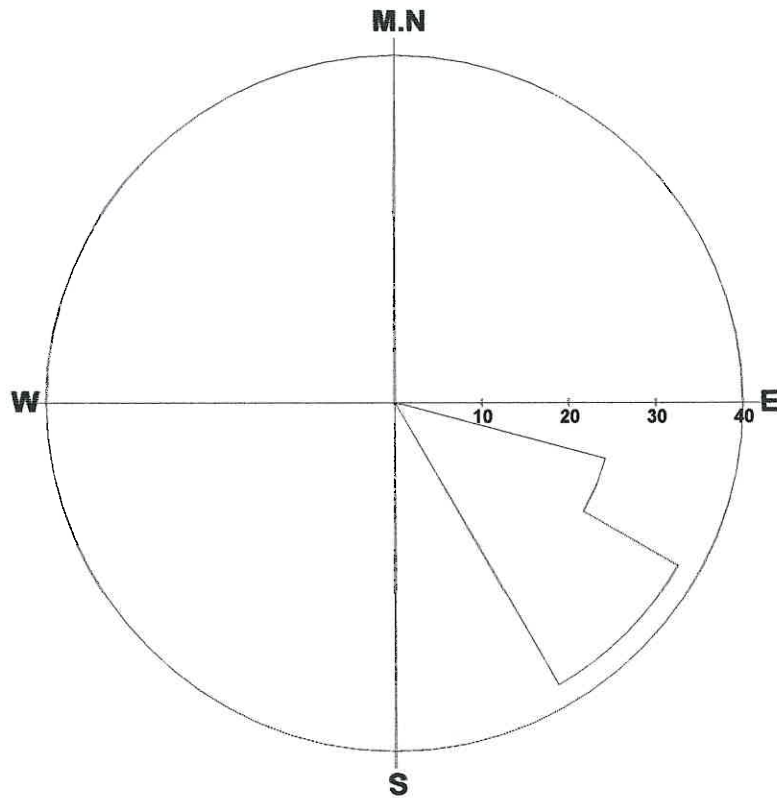
Dir	%	Dir	%	Dir	%
0-	6	135-	13	270-	0
15-	6	150-	13	285-	0
30-	6	165-	6	300-	6
45-	0	180-	0	315-	0
60-	6	195-	6	330-	0
75-	6	210-	6	345-	0
90-	0	225-	6		
105-	0	240-	0		
120-	13	255-	0		

Depth : 2.501 - 18.032 m

Aperture : 0.0 - 88.0 mm

C-20.STR

<<VEIN>>



Number of Data : 8/94

Max : 37.5%

Grouping Angle : 15 deg

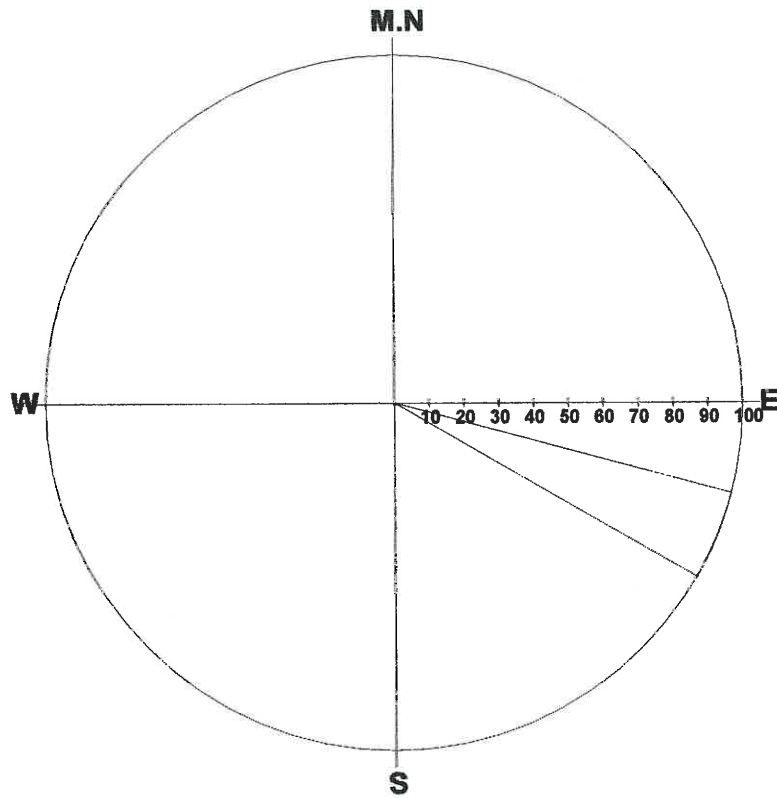
Dir	%	Dir	%	Dir	%
0-	0	135-	38	270-	0
15-	0	150-	0	285-	0
30-	0	165-	0	300-	0
45-	0	180-	0	315-	0
60-	0	195-	0	330-	0
75-	0	210-	0	345-	0
90-	0	225-	0		
105-	25	240-	0		
120-	38	255-	0		

Depth : 2.501 - 18.032 m

Aperture : 0.0 - 88.0 mm

C-20.STR

<<MINERAL BAND>>



Number of Data : 1/94

Max : 100.0%

Grouping Angle : 15 deg

Dir	%	Dir	%	Dir	%
0-	0	135-	0	270-	0
15-	0	150-	0	285-	0
30-	0	165-	0	300-	0
45-	0	180-	0	315-	0
60-	0	195-	0	330-	0
75-	0	210-	0	345-	0
90-	0	225-	0		
105-	100	240-	0		
120-	0	255-	0		

Depth : 2.501 - 18.032 m

Aperture : 0.0 - 88.0 mm

Title: C-20.STR
 Comment: JOINT
 Depth: 2.501 - 18.032 m
 Aperture: 0.0 - 88.0 mm

Sort: 1/7
 Form: 5/5
 Condition: 11/11
 Remark: 9/9

2011/ 8/ 31
 Elevation: 0.000m
 Water Level: 16.763m

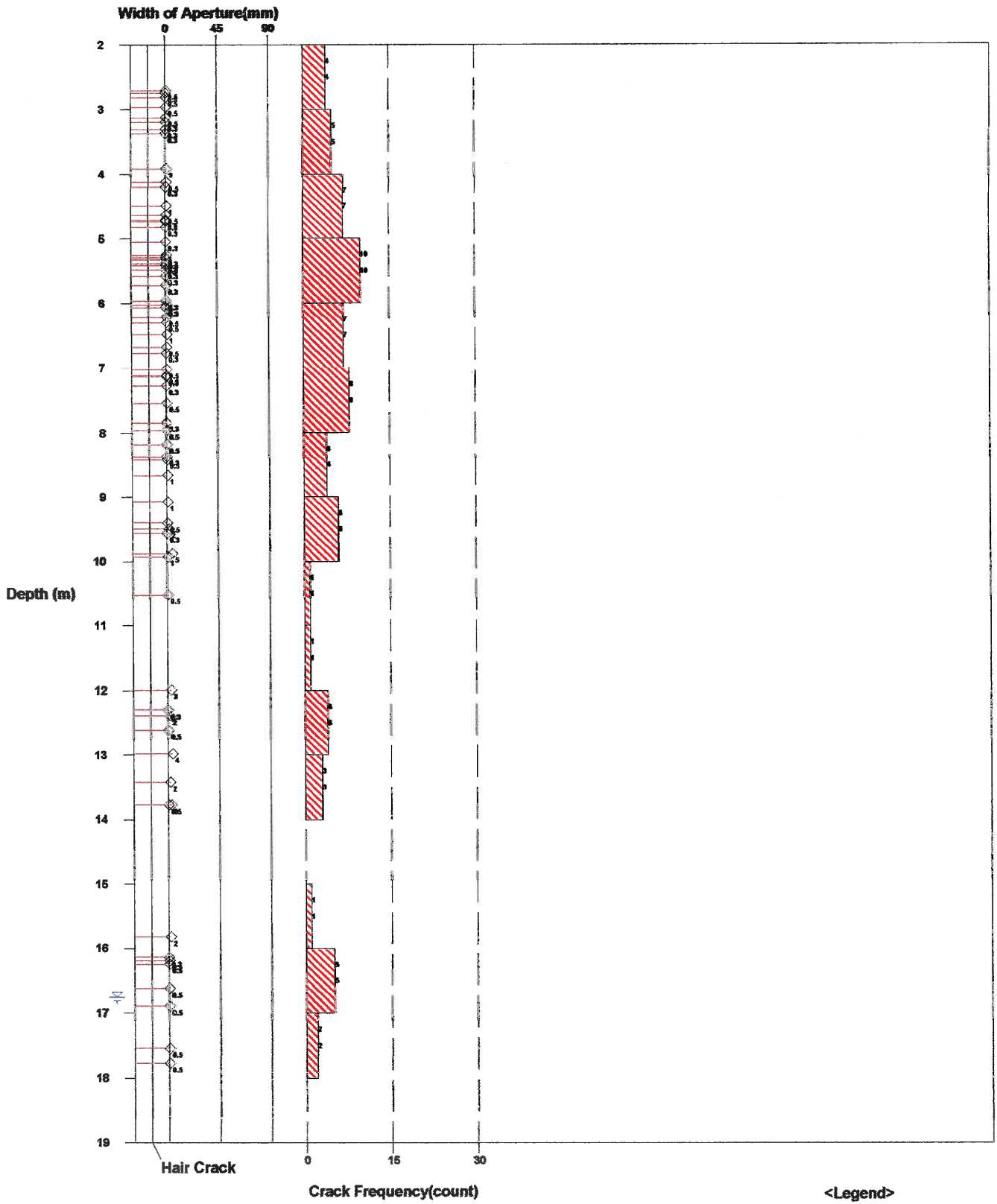


Fig. Rock Mass Condition Graph

-  All Crack Frequency
-  Open Crack Frequency
-  Water Level

Title: C-20.STR
 Comment: SHEAR ZONE
 Depth: 2.501 - 18.032 m
 Aperture: 0.0 - 88.0 mm

Sort: 1/7
 Form: 5/5
 Condition: 11/11
 Remark: 9/9

2011/ 8/ 31
 Elevation: 0.000m
 Water Level: 16.763m

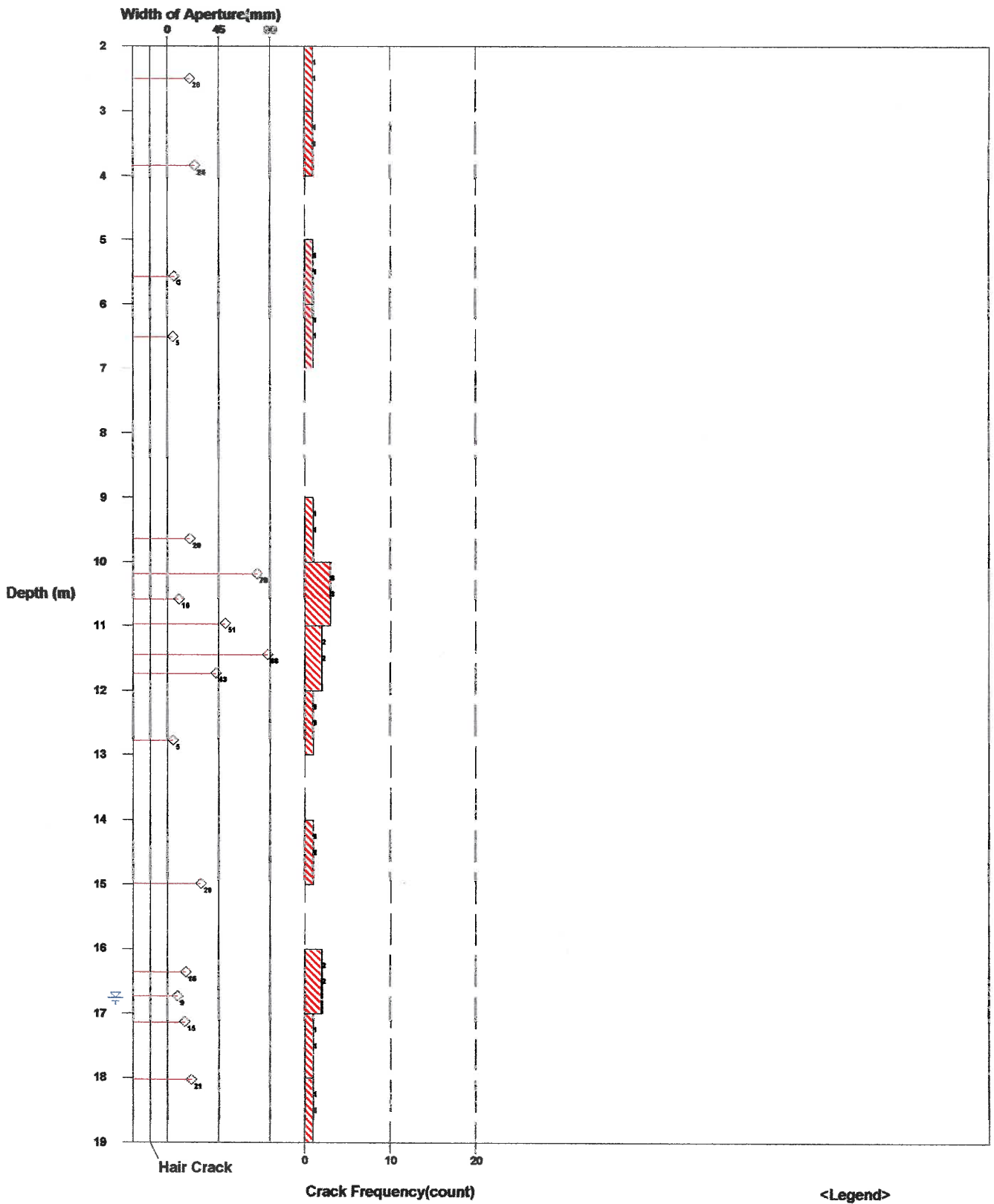


Fig. Rock Mass Condition Graph

- All Crack Frequency
- Open Crack Frequency
- Water Level

Title: C-20.STR
 Comment: VEIN
 Depth: 2.501 - 18.032 m
 Aperture: 0.0 - 88.0 mm

Sort: 1/7
 Form: 5/5
 Condition: 11/11
 Remark: 9/9

2011/ 8/ 31
 Elevation: 0.000m
 Water Level: 16.763m

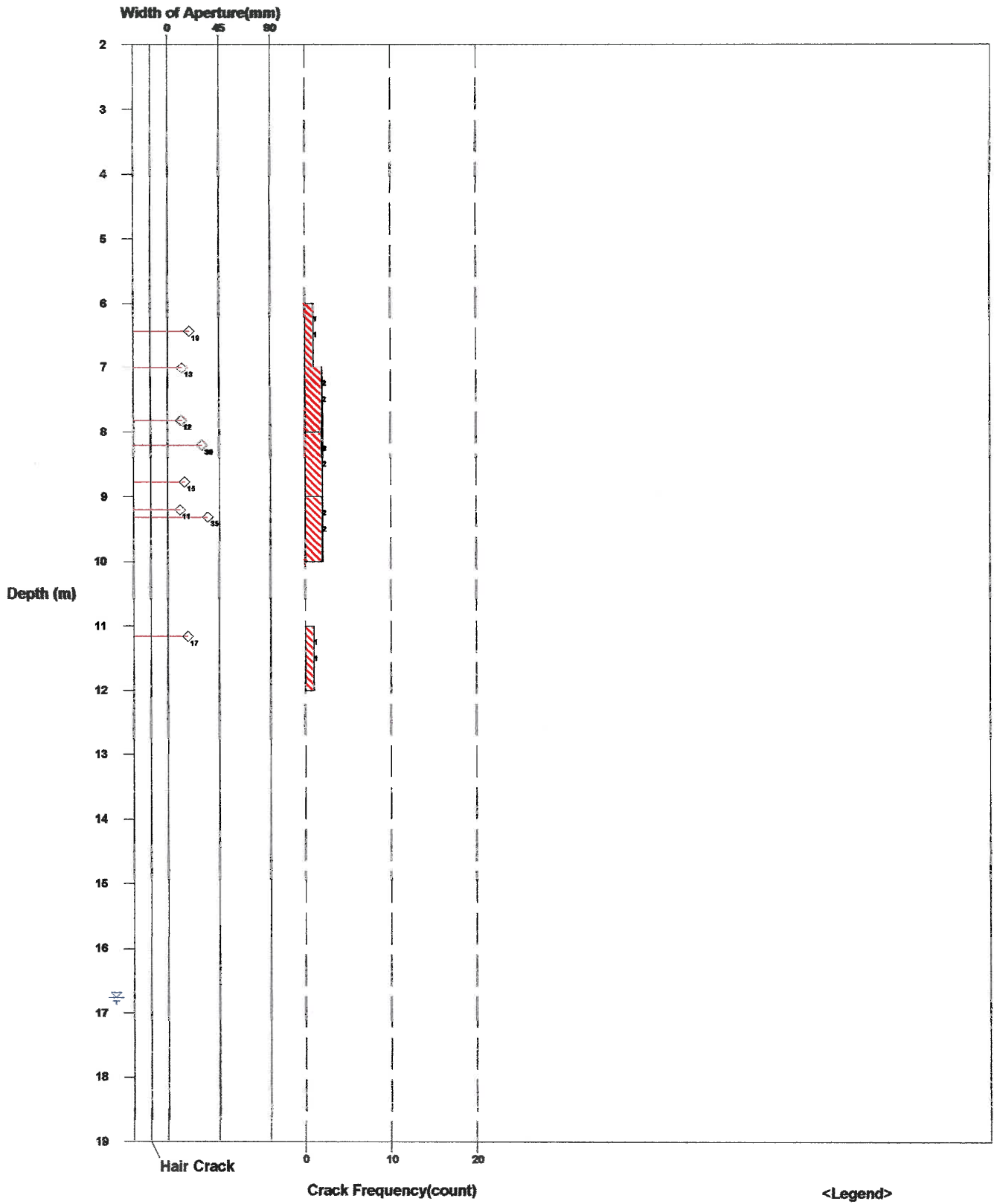


Fig. Rock Mass Condition Graph

- All Crack Frequency
- Open Crack Frequency
- Water Level

Title: C-20.STR
 Comment: MINERAL BAND
 Depth: 2.501 - 18.032 m
 Aperture: 0.0 - 88.0 mm

Sort: 1/7
 Form: 5/5
 Condition: 11/11
 Remark: 9/9

2011/ 8/ 31
 Elevation: 0.000m
 Water Level: 16.763m

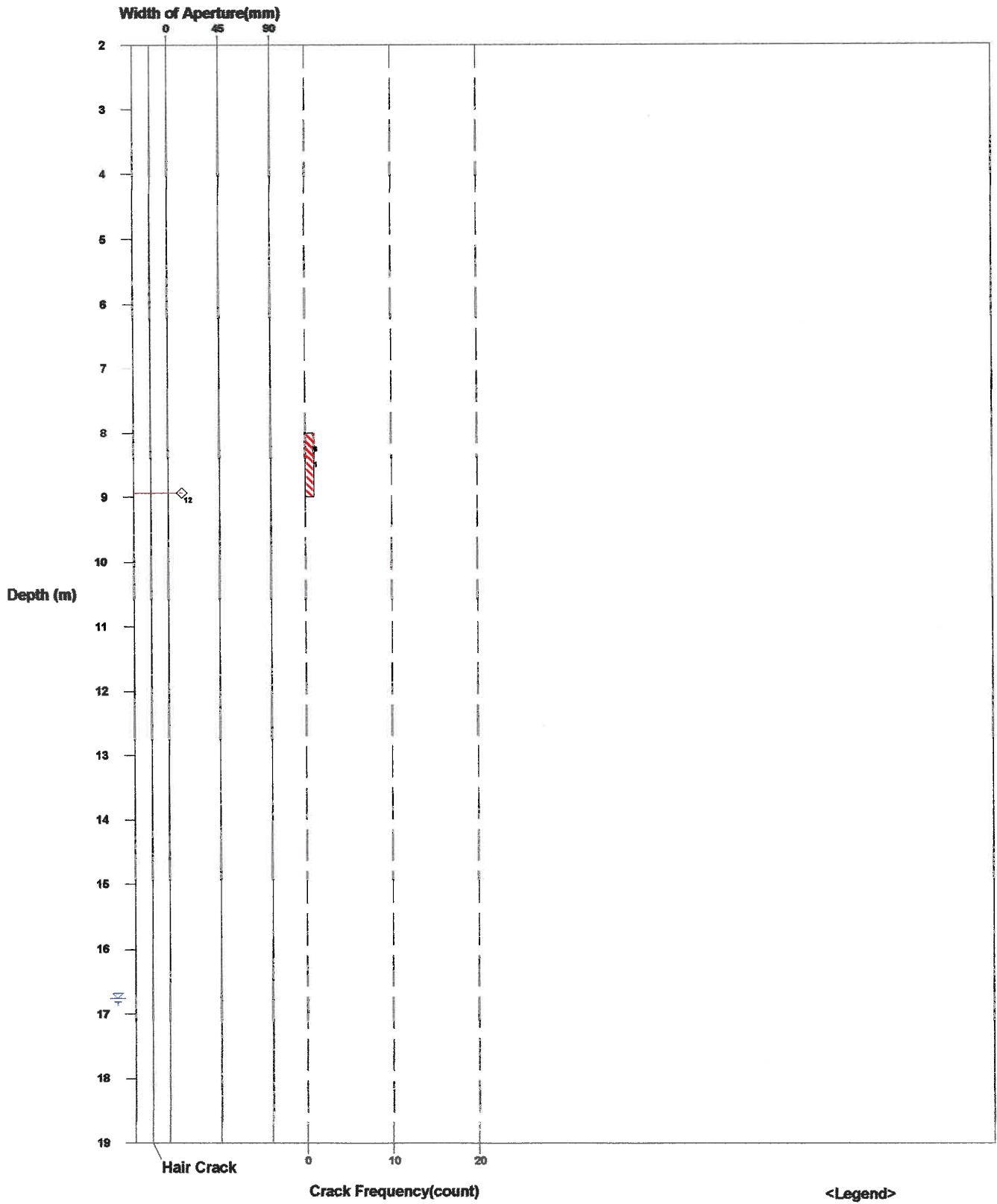
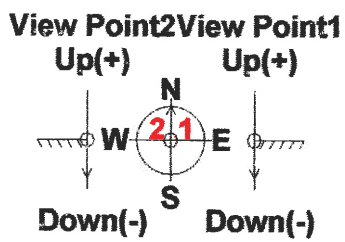
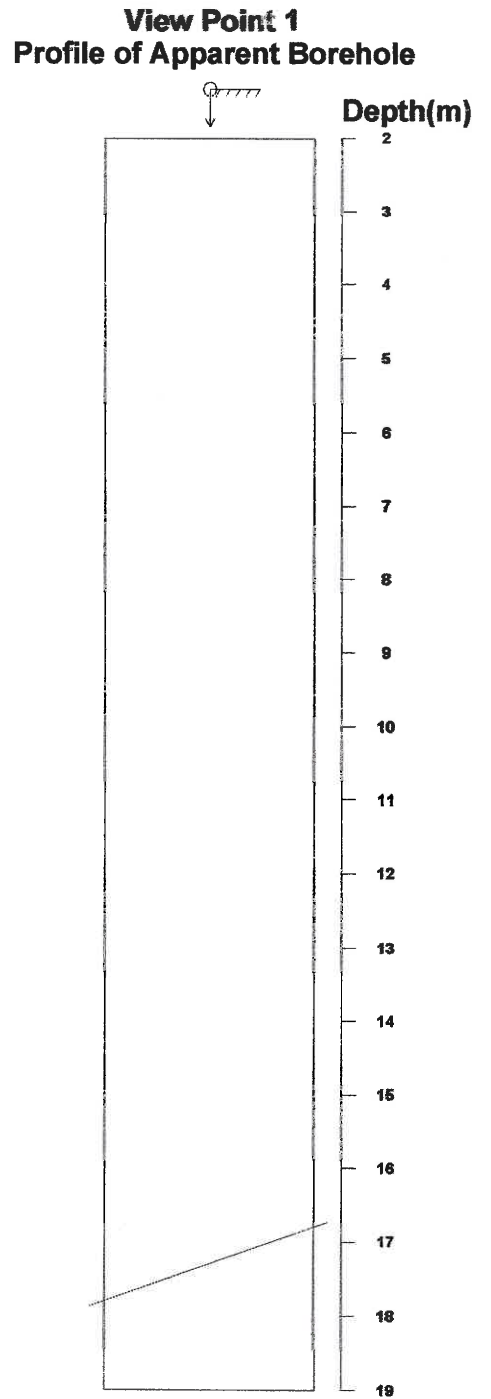
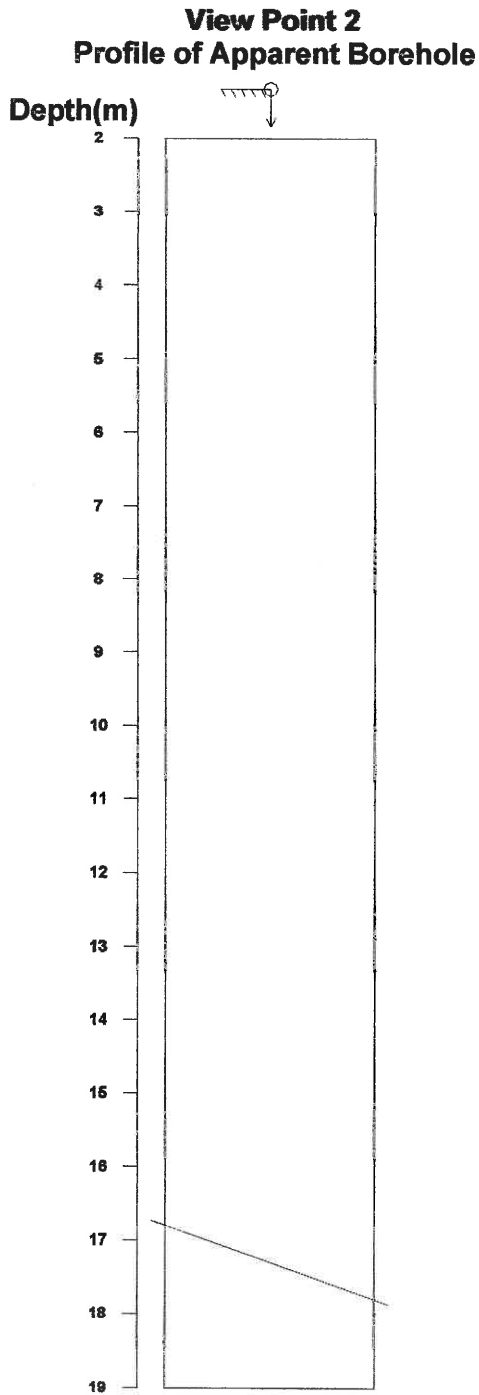


Fig. Rock Mass Condition Graph

- All Crack Frequency
- Open Crack Frequency
- Water Level

Title: C-20.STR
 Comment: FOLIATION
 Depth: 2.501 - 18.032 m
 Aperture: 0.0 - 88.0 mm

Sort: 1/7
 Form: 5/5
 Condition: 11/11
 Remark: 9/9



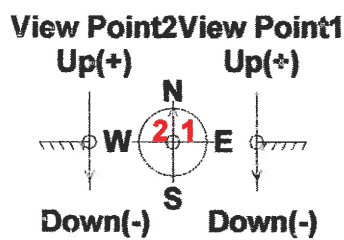
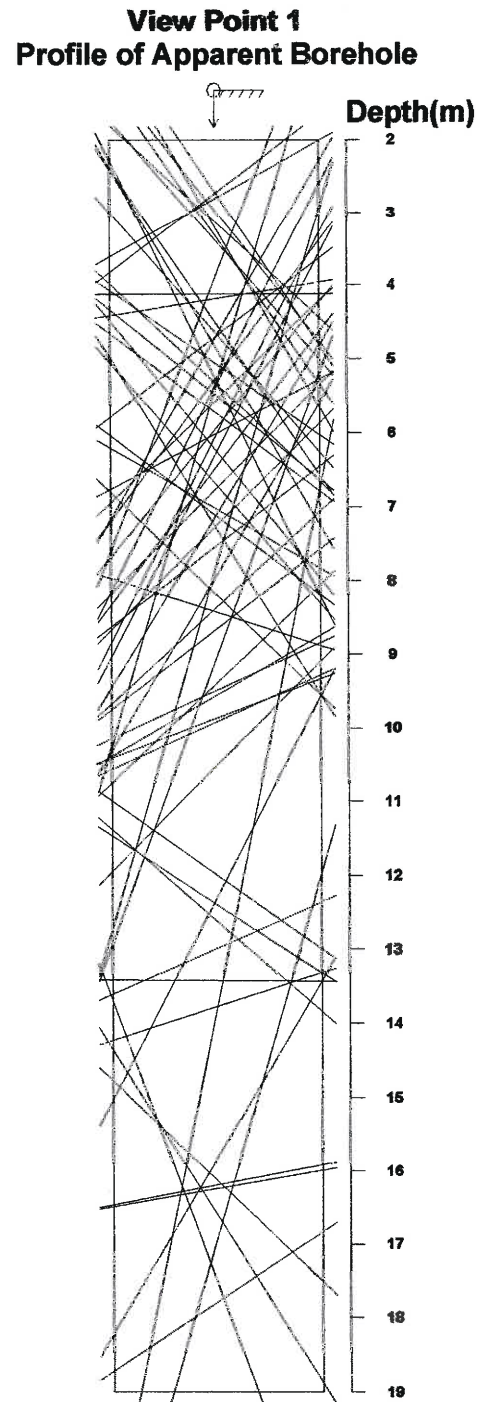
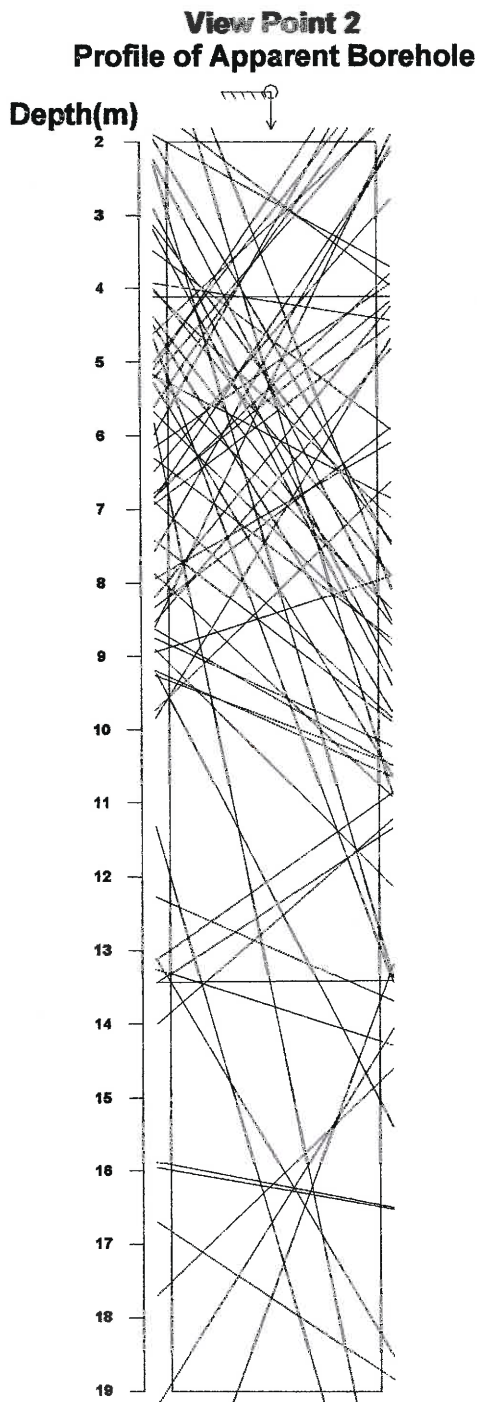
Direction: 0 deg
 Inclination: Vertical(Down)

<Legend>
 Entrance G.L.
 Bottom

Fig. Apparent Dip

Title: C-20.STR
 Comment: JOINT
 Depth: 2.501 - 18.032 m
 Aperture: 0.0 - 88.0 mm

Sort: 1/7
 Form: 5/5
 Condition: 11/11
 Remark: 9/9



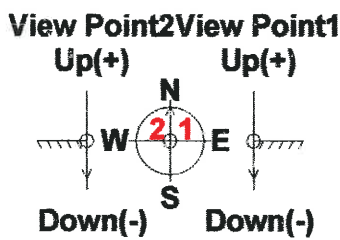
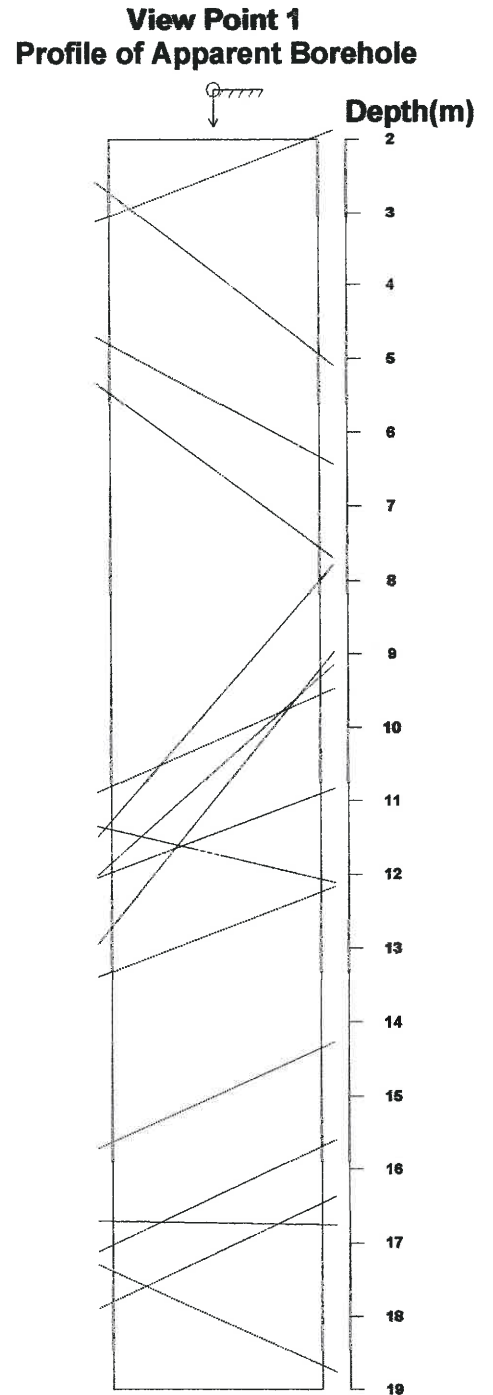
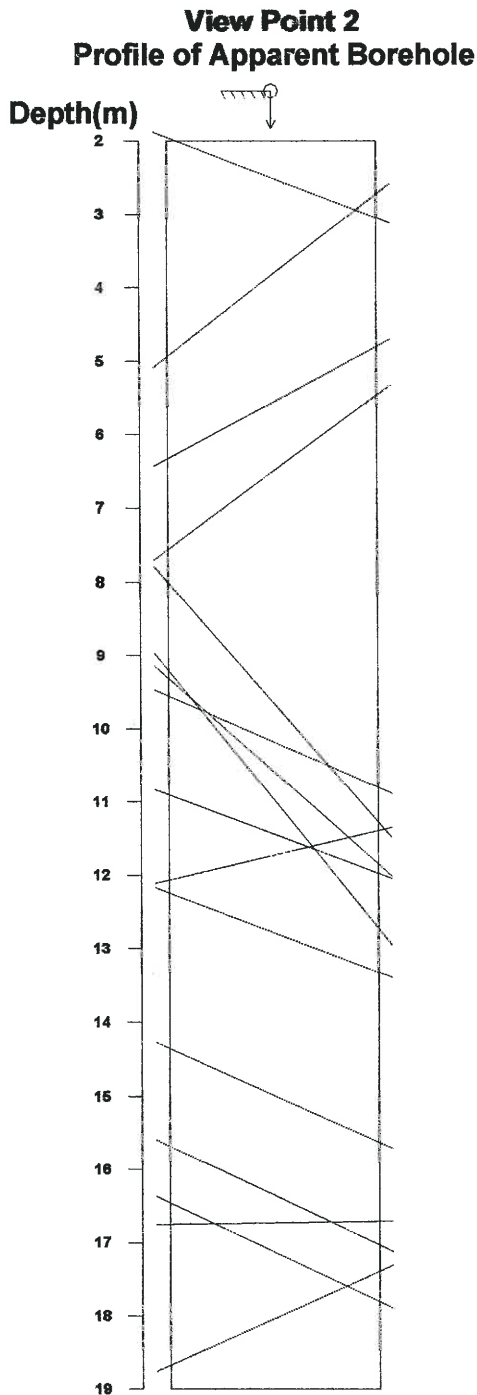
Direction: 0 deg
 Inclination: Vertical(Down)

<Legend>
 Entrance G.L.
 Bottom Bottom

Fig. Apparent Dip

Title: C-20.STR
 Comment: SHEAR ZONE
 Depth: 2.501 - 18.032 m
 Aperture: 0.0 - 88.0 mm

Sort: 1/7
 Form: 5/5
 Condition: 11/11
 Remark: 9/9



Direction: 0 deg
 Inclination: Vertical(Down)

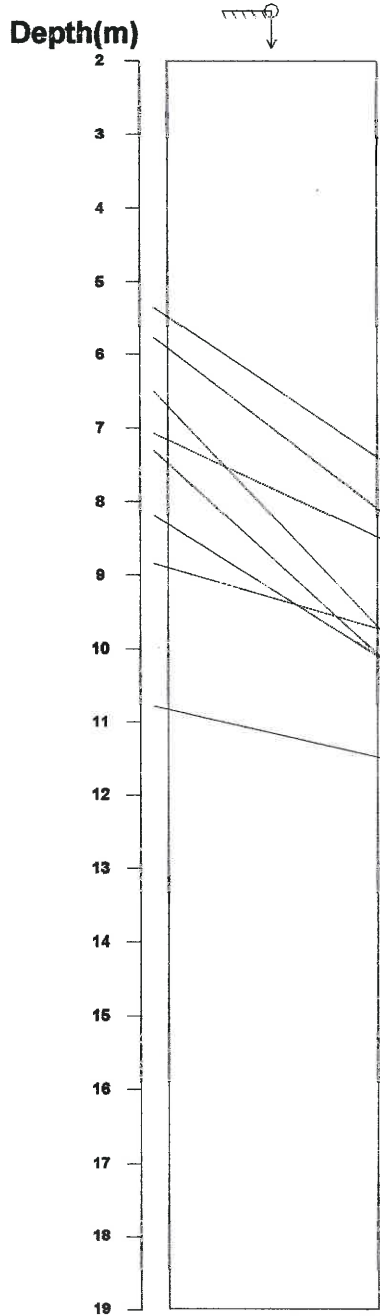
<Legend>
 Entrance G.L.
 Bottom Bottom

Fig. Apparent Dip

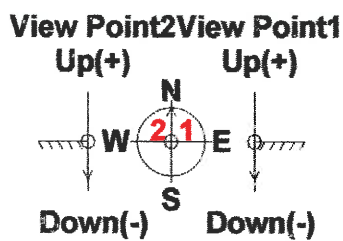
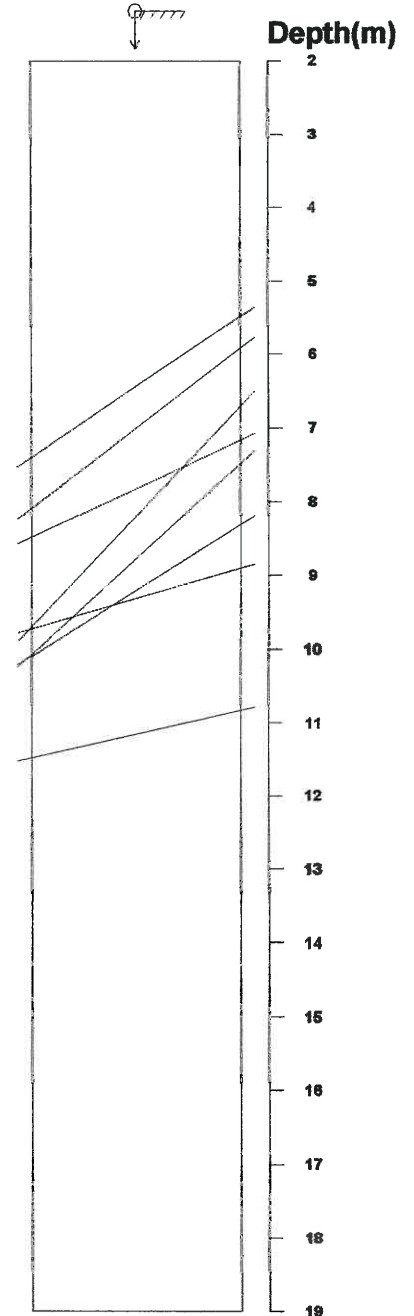
Title: C-20.STR
 Comment: VEIN
 Depth: 2.501 - 18.032 m
 Aperture: 0.0 - 88.0 mm

Sort: 1/7
 Form: 5/5
 Condition: 11/11
 Remark: 9/9

View Point 2
 Profile of Apparent Borehole



View Point 1
 Profile of Apparent Borehole



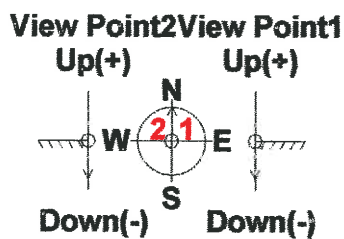
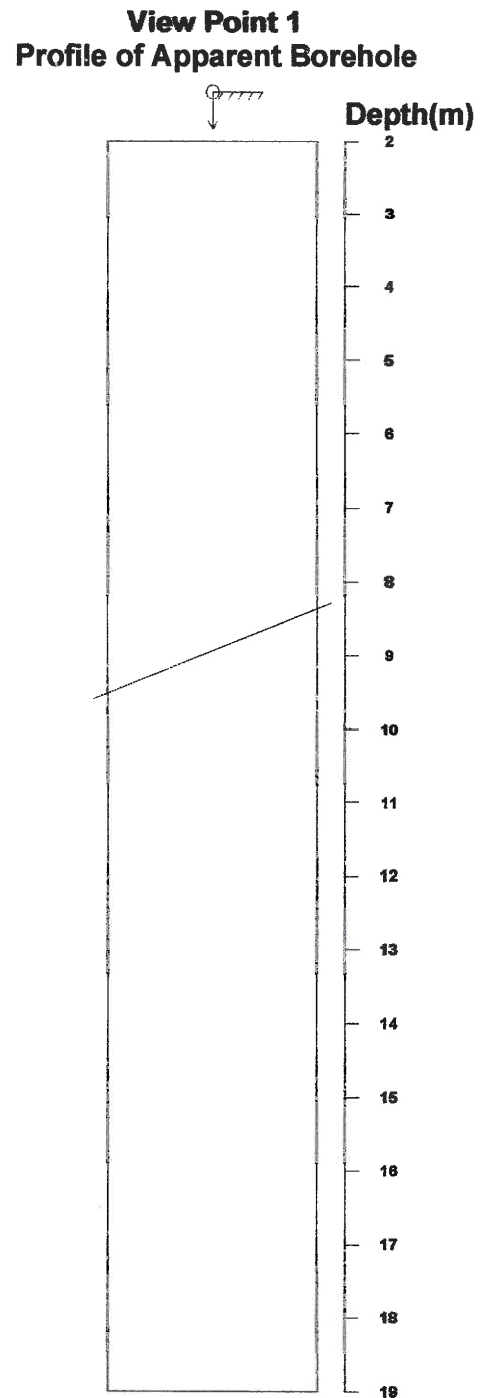
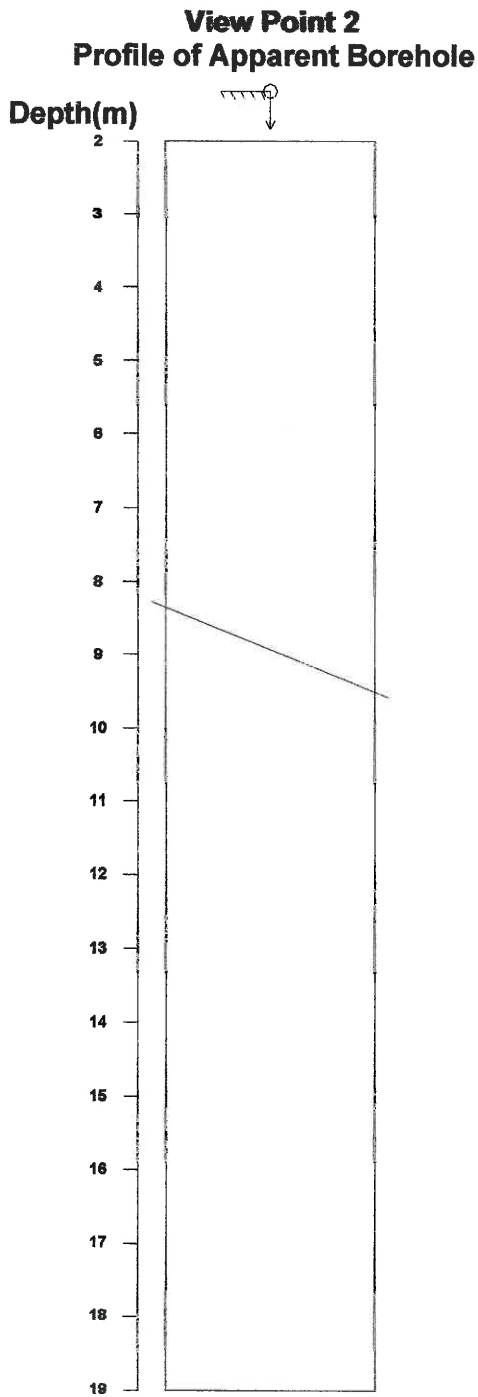
Direction: 0 deg
 Inclination: Vertical(Down)

<Legend>
 Entrance G.L.
 Bottom

Fig. Apparent Dip

Title: C-20.STR
 Comment: MINERAL BAND
 Depth: 2.501 - 18.032 m
 Aperture: 0.0 - 88.0 mm

Sort: 1/7
 Form: 5/5
 Condition: 11/11
 Remark: 9/9



Direction: 0 deg
 Inclination: Vertical(Down)

<Legend>
 Entrance G.L.
 Bottom Bottom

Fig. Apparent Dip