

COPYRIGHT NOTICE

This geotechnical log and its associated data (the Document) is licensed by the Queensland Department of Transport and Main Roads under the [Creative Commons Attribution 4.0 Licence](#) (CC BY 4.0). When reusing the Document, in whole or in part, please attribute the Department and author as follows: "*(c) State of Queensland (Department of Transport and Main Roads) 2022, licensed under the CC BY 4.0 Licence, prepared by Insitu Geotech Services*". This licence does not apply to logos or trademarks.

LIMITATION OF LIABILITY

The CC BY 4.0 Licence contains a comprehensive Disclaimer of Warranties and Limitation of Liability. In addition, please note that this Document was prepared for Departmental use only. Reuse of the Document by anyone for any other purpose could result in error and/or loss. You should obtain professional advice before making decisions based on the contents of the Document.

When reproducing any part of this Document, you must also reproduce this limitation of liability notice in addition to the italicised attribution statement above.

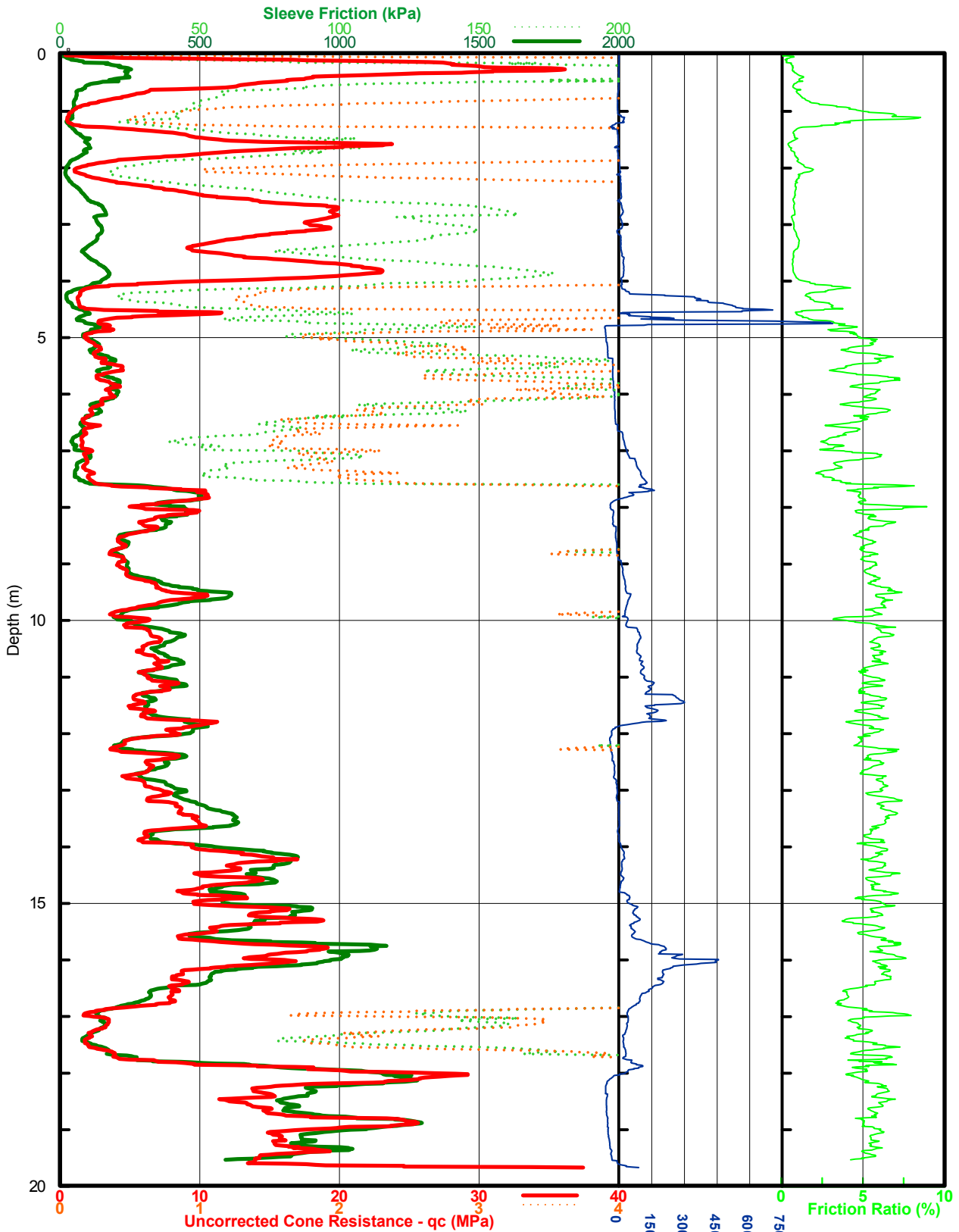
Retrieved from the Queensland Geotechnical Database <http://qgd.org.au/>

This log has been contributed to the Queensland Geotechnical Database with the permission of Insitu Geotech Services.

CONE PENETROMETER TEST RESULT

TMR
M1 - 6 Lanes - Varsity to Tugan Project
Gold Coast QLD

CPTu30L



Job Number : G17-12-03
 Test Date : 19/12/2017
 GPS Position : 56 J 0545644, 6889979
 GPS Format : WGS 84
 Rig : Eunice
 Cone Number : S15CFIIP.S17298
 Predrill Depth : 0.00m
 Cone Stabilisation @ : 4.16m
 Terminated Due To : Equipment at Risk

Tested By : Victoria Ruiz
 Test Category : IGS-1S
 Checked By : Glen Beaven

Pore Pressure (kPa)

Insitu
 Geotech
 Services
 Pty Ltd

IGS