

COPYRIGHT NOTICE

This geotechnical log and its associated data (the Document) is licensed by the Queensland Department of Housing and Public Works under the [Creative Commons Attribution 4.0 Licence](#) (CC BY 4.0). When reusing the Document, in whole or in part, please attribute the Department and author as follows: "*(c) State of Queensland (Department of Housing and Public Works) 2020, licensed under the CC BY 4.0 Licence, prepared by Arup*". This licence does not apply to logos or trademarks.

LIMITATION OF LIABILITY

The CC BY 4.0 Licence contains a comprehensive Disclaimer of Warranties and Limitation of Liability. In addition, please note that this Document was prepared for Departmental use only. Reuse of the Document by anyone for any other purpose could result in error and/or loss. You should obtain professional advice before making decisions based on the contents of the Document.

When reproducing any part of this Document, you must also reproduce this limitation of liability notice in addition to the italicised attribution statement above.

Retrieved from the Queensland Geotechnical Database <http://ggd.org.au/>

This log has been contributed to the Queensland Geotechnical Database with the permission of Arup.

BOREHOLE RECORD

HOLE

BH25

SHEET 1
OF 4

PROJECT	LANG PARK REDEVELOPMENT		LOGGED BY	VL
CONTRACTOR	SP & KF Christensen	ANGLE	Vertical	
DRILL MODEL	Jacro 350	BEARING	-	
MOUNTING	4WD Truck	DIAMETER	50/75/100mm	
		GROUND LEVEL	~RL 19.0m	
		LOCATION	Refer Borehole Plan	

DRILLING	STRATA		MATERIAL DESCRIPTION		CONDITION		OBSERVATION									
SAMPLE, TEST, BIT, SUPPORT, ETC.	R.L.	DEPTH	GROUP SYMBOL	LEGEND	SOIL TYPE Colour, Plasticity, Grain Size, Minor Components	CONSISTENCY		SOIL ORIGIN, STRUCTURE, ETC.								
	AHD	m				COHESIVE	NON COHESIVE									
						VS	S	ST	VST	H	VL	L	MD	D	VD	

SPT @ 1.5m 12 / 20 / 25 N = 45	18.30	0.70		Silty GRAVEL/Gravelly SILT: brown to dark brown fine to coarse gravel	D												FILL
	17.50	1.50															
	15.00	4.00		SILT/XWROCK: Grey and orange yellow bands with some fine gravel	D												
SPT @ 3.0m 30,95 N = Refusal				Rock coring from 4.0m to 7.9m													
	11.10	7.90															

NOTES	JOB
<p>1) No groundwater encountered prior to washboring at 3m. 2) Coring from 4.0m to 7.9m and from 11.0m to 15.1m</p>	12215

BOREHOLE/TEST PIT LANGP2.GPJ ARUP_AUS.GDT 03/01/01

PROJECT	LANG PARK REDEVELOPMENT			LOGGED BY	VL
CONTRACTOR	SP & KF Christensen	ANGLE	Vertical	DATE/S	16.11.00
DRILL MODEL	Jacro 350	BEARING	-	GROUND LEVEL	-RL 19.0m
MOUNTING	4WD Truck	DIAMETER	50/75/100mm	LOCATION	Refer Borehole Plan

DRILLING	STRATA				MATERIAL DESCRIPTION	CONDITION										OBSERVATION					
	SAMPLE, TEST, BIT, SUPPORT, ETC.	R.L.	DEPTH	GROUP SYMBOL		LEGEND	SOIL TYPE Colour, Plasticity, Grain Size, Minor Components	WATER / MOISTURE	CONSISTENCY										SOIL ORIGIN, STRUCTURE, ETC.		
		AHD	m						COHESIVE					NON COHESIVE							
					VS	S			F	ST	VST	H	VL	L	MD	D	VD				
SPT @ 7.9m 14 / 21 / 30, 120mm bouncing N = Refusal					XW ROCK: Orange brown and grey with some silt and clay																
		9																			
		10			becoming harder to drill at 9.5m																
SPT @ 10.0m 30, 130mm N = Refusal																					
	8.00	11.00			return to rock coring at 11.0m																
		12																			
		13																			
		14																			
		15																			

NOTES

- No groundwater encountered prior to washboring at 3m.
- Coring from 4.0m to 7.9m and from 11.0m to 15.1m

JOB

12215

PROJECT LANG PARK REDEVELOPMENT				LOGGED BY VL	
CONTRACTOR SP & KF Christensen		ANGLE Vertical		DATE/S 18.11.00	
DRILL MODEL Jacro 350		BEARING -		GROUND LEVEL ~RL 19.0m	
MOUNTING 4WD Truck		DIAMETER 50/75/100mm		LOCATION Refer Borehole Plan	

DRILLING		STRATA		MATERIAL DESCRIPTION								DISCONTINUITIES		
CASING RUN REC. (%)	WATER	SAMPLE TEST	R.L. AHD	DEPTH m	LEGEND	ROCK TYPE Colour, Grain Size, Structure, Minor Components	WEATHERING			ESTIMATED ROCK STRENGTH	FREQUENCY (per m)	SPECIFIC		GENERAL DESCRIPTION Planarity, Roughness, Coating, Infill
							EL	M	EH			1	3	
				1										
				2										
				3										
				4										
				5		META-ARGILLITE: Grey to dark grey/white, some quartz gravel							Jo	45 1
				6		gravelly clay band much crushed rocks becoming grey to cream in colour							Jo	45 1
				7		mush crushed rocks and orange brown clay							Jo	45 2
			11.10	7.90										

CORED BOREHOLE LANGP2.GPJ ARUP_AUS.GDT 03/01/01

NOTES 1) No groundwater encountered prior to washboring at 3m. 2) Coring from 4.0m to 7.9m and from 11.0m to 15.1m	TYPE OF DISCONTINUITY Jo JOINT Be BEDDING PLANE PARTING Fo FOLIATION PARTING Cl CLAY SEAM We WEATHERED SEAM Cr CRUSHED SEAM Sh SHEARED ZONE Qr QUARTZ SEAM	JOB <div style="font-size: 24px; text-align: center;">12215</div>
---	--	---

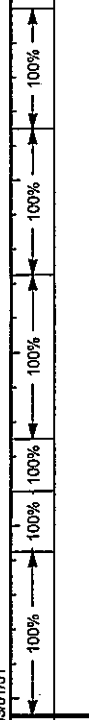
PROJECT **LANG PARK REDEVELOPMENT**

LOGGED BY **VL**
DATE/S **16.11.00**

CONTRACTOR **SP & KF Christensen** ANGLE **Vertical**
DRILL MODEL **Jacro 350** BEARING **-**
MOUNTING **4WD Truck** DIAMETER **50/75/100mm**

GROUND LEVEL **~RL 19.0m**
LOCATION **Refer Borehole Plan**

DRILLING			STRATA		MATERIAL DESCRIPTION							DISCONTINUITIES		
CASING RUN REC. (%)	WATER	SAMPLE TEST	R.L.	DEPTH	LEGEND	ROCK TYPE Colour, Grain Size, Structure, Minor Components	WEATHERING	ESTIMATED ROCK STRENGTH			FREQUENCY (per m)	SPECIFIC		GENERAL DESCRIPTION
			AHD	m				EL	M	EH		1	3	
						return to washboring from 7.9m to 11.0m								
			8.00	11.00		META-ARGILLITE: Orange/yellow brown with much clay and fine to medium gravel, rock has a fine silty structure	XW							
						some quartz gravel	DW							
						some horizontal clay seams in rock								
			3.90	15.10										



Is(50)=0.98

NOTES

- 1) No groundwater encountered prior to washboring at 3m.
- 2) Coring from 4.0m to 7.9m and from 11.0m to 15.1m

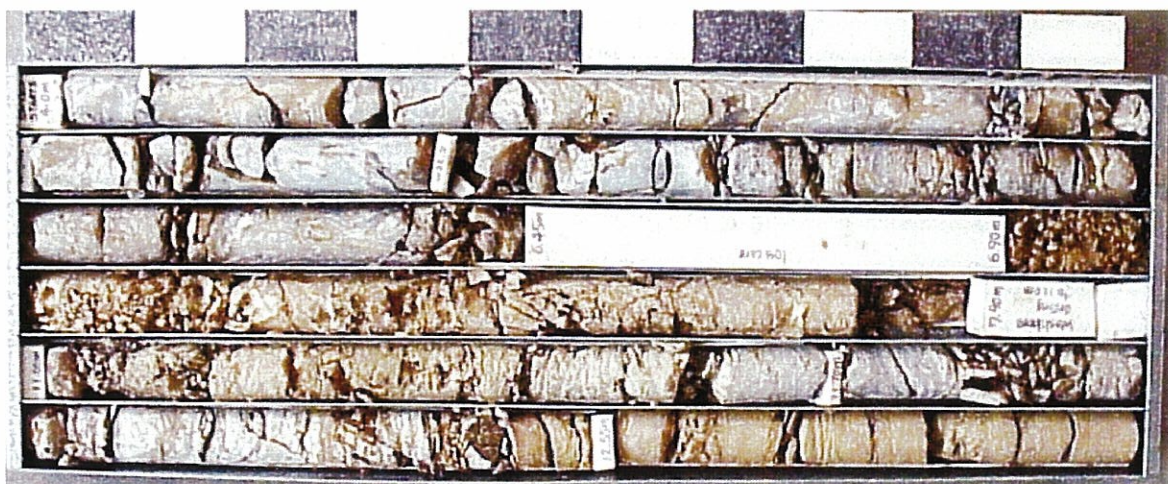
TYPE OF DISCONTINUITY

- Jo JOINT
- Be BEDDING PLANE PARTING
- Fo FOLIATION PARTING
- Cl CLAY SEAM
- We WEATHERED SEAM
- Cr CRUSHED SEAM
- Sh SHEARED ZONE
- Qr QUARTZ SEAM

JOB

12215

CORED BOREHOLE LANGP2.GPJ ARUP_AUS.GDT 03/07/01



Borehole BH25

4.00m - 12.55m

Box 1 of 2



Borehole BH25

2.00m - 8.00m

Box 2 of 2