

## **COPYRIGHT NOTICE**

This geotechnical log and its associated data (the Document) is licensed by the Queensland Department of Transport and Main Roads under the [Creative Commons Attribution 4.0 Licence](#) (CC BY 4.0). When reusing the Document, in whole or in part, please attribute the Department as follows: "*(c) State of Queensland (Department of Transport and Main Roads) 2020, licensed under the CC BY 4.0 Licence*". This licence does not apply to the Queensland Government logo or trademarks.

## **LIMITATION OF LIABILITY**

The CC BY 4.0 Licence contains a comprehensive Disclaimer of Warranties and Limitation of Liability. In addition, please note that this Document was prepared for Departmental use only. Reuse of the Document by anyone for any other purpose could result in error and/or loss. You should obtain professional advice before making decisions based on the contents of the Document.

When reproducing any part of this Document, you must also reproduce this limitation of liability notice in addition to the italicised attribution statement above.

Retrieved from the Queensland Geotechnical Database <http://qgd.org.au/>



**Queensland  
Government**

Department of  
**Main Roads**

# ENGINEERING BOREHOLE

FOR GEOTECHNICAL TERMS AND  
SYMBOLS REFER FORM F:GEOT 017/3-2005

BOREHOLE No     BH4    

SHEET     1     of     2    

REFERENCE No     H9738    

PROJECT IPSWICH MOTORWAY / LOGAN MOTORWAY GEOTECHNICAL INVESTIGATION

LOCATION Pier 5, Approximate Chainage 147m on control MCK1-C. COORDINATES 29650.1 E; 147270.1 N

PROJECT No FG5404 SURFACE R.L. 23.10 DATE STARTED 28/08/05 DATUM Ipswich Motorway

JOB No 148/17A/57 DATUM AHD DATE COMPLETED 28/08/05 DRILLER Drillsure

DEPTH (m)	R.L. (m)	ALGER CASING WASH BORING CORE DRILLING	RQD (%)	CORE REC %	SAMPLE	MATERIAL DESCRIPTION	USC WEATHERING	INTACT STRENGTH	DEFECT SPACING (mm)	GRAPHIC LOG	ADDITIONAL DATA AND TEST RESULTS	SAMPLES TESTS	
													EH
0	23.10					ASPHALT - Driller's log ROAD BASE - Driller's log  Pale grey white Clayey Silt.							
23.03													
22.30						SANDSTONE  Grey becoming grey with red iron concretions, fine grained.					30/120mm N>50	SPT	
1													
2							HW				30/100mm N>50	SPT	
20.05			(80)			Tan to grey, minor iron staining, fine to medium grained, subhorizontal bedding, medium strength.					10/20mm HB N>50	SPT	
4							MW-SW				Jt, subhorizontal. Jt, subhorizontal, slight Fest. Jt, 75°. Jt, subhorizontal.  Siltstone band.	Is(50)=0.50 MPa Is(50)=0.56 MPa   x o	
5	17.98					Grey, trace iron stains, fine to medium grained, medium strength, massive, subhorizontal bedding.					Is(50)=0.21 MPa Is(50)=0.77 MPa	x o	
6			100 (9)			There is a large subvertical joint running from 6.17 - 7.98m with irregular surfaces and 5mm clay infill in places. Defect spacing for this interval has been set at "wide".  Most defects appear to be drilling induced bedding plane partings.							
7							SW						
8	15.12		100 (84)			SILTSTONE  Grey, fine grained, subhorizontal bedding, low strength becoming carbonaceous with depth.					2 x 1cm clay bands.	Is(50)=0.15 MPa Is(50)=0.47 MPa	x o
9	14.46					SANDSTONE  Grey, fine to medium grained, medium strength.					Siltstone band Siltstone band	Is(50)=0.85 MPa Is(50)=0.56 MPa Is(50)=0.54 MPa Is(50)=0.74 MPa	x o o o
10	13.10		100 (68)								Siltstone band Coarse grained sandstone.	Is(50)=0.34 MPa Is(50)=0.98 MPa	x o

REMARKS No groundwater reported during drilling. See Additional Descriptive Coding sheet for abbreviations.

LOGGED BY  
J. Kleindienst



**Queensland  
Government**

Department of  
**Main Roads**

# ENGINEERING BOREHOLE

FOR GEOTECHNICAL TERMS AND  
SYMBOLS REFER FORM F:GEOT 017/3-2005

BOREHOLE No     BH4    

SHEET     2     of     2    

REFERENCE No     H9738    

PROJECT IPSWICH MOTORWAY / LOGAN MOTORWAY GEOTECHNICAL INVESTIGATION

LOCATION Pier 5, Approximate Chainage 147m on control MCK1-C. COORDINATES 29650.1 E; 147270.1 N

PROJECT No FG5404 SURFACE R.L. 23.10 DATE STARTED 28/08/05 DATUM Ipswich Motorway

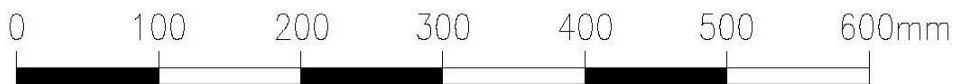
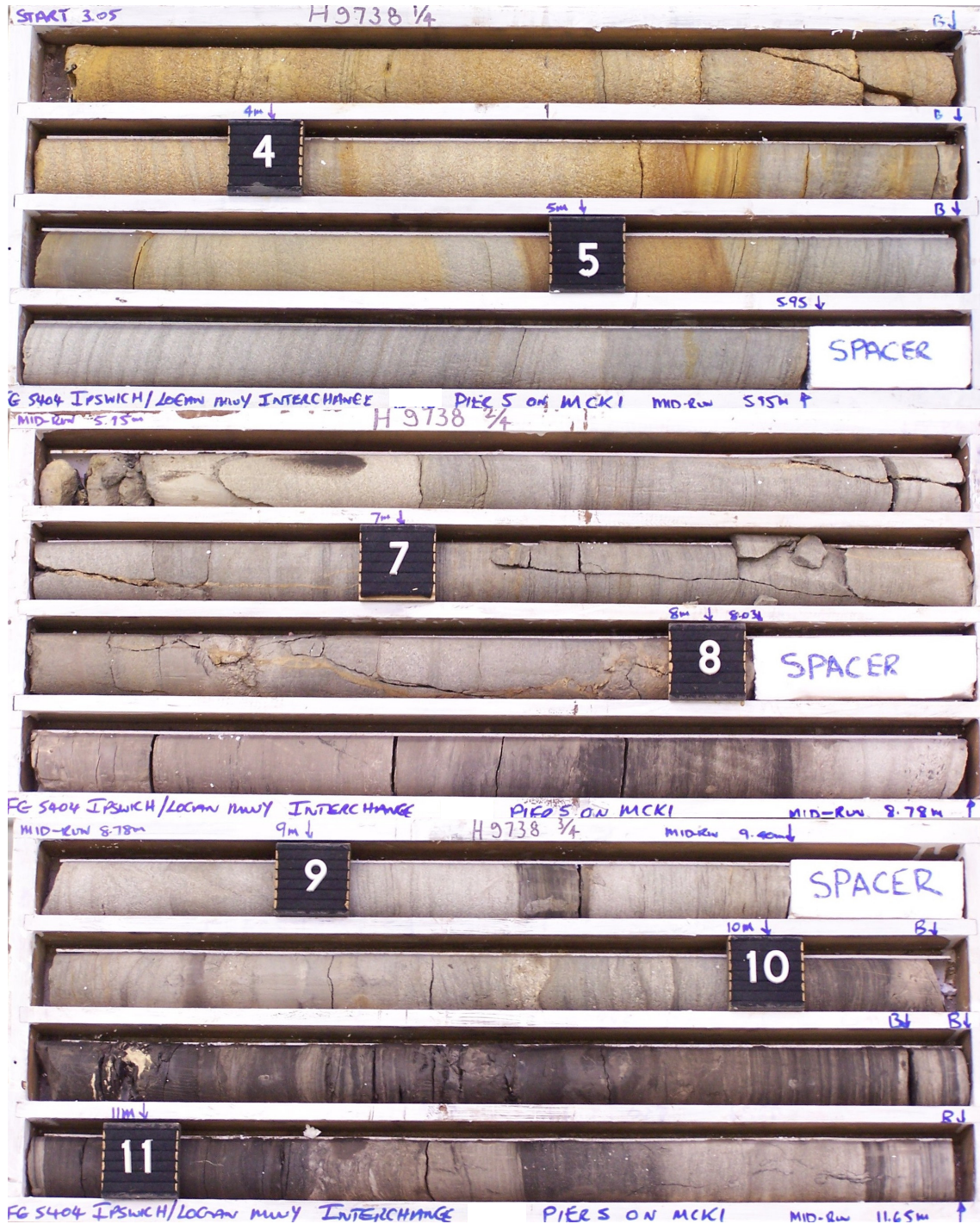
JOB No 148/17A/57 DATUM AHD DATE COMPLETED 28/08/05 DRILLER Drillsure

DEPTH (m)	R.L. (m)	ALGIER CASING WASH BORING CORE DRILLING	RQD (%)	CORE REC %	SAMPLE	MATERIAL DESCRIPTION	USC WEATHERING	INTACT STRENGTH						DEFECT SPACING (mm)	GRAPHIC LOG	ADDITIONAL DATA AND TEST RESULTS	SAMPLES TESTS
								EH	EH	EH	EH	EH	EH				
10	13.10					<b>CARBONACEOUS SILTSTONE</b> Dark grey, fine grained, subhorizontal bedding, very low to low strength. Becoming generally medium strength.								Jt, 10°.			
11	11.98					<b>SANDSTONE</b> Generally grey, with some dark carbonaceous material, fine grained, subhorizontal bedding, generally medium strength.	SW							Clayey band.	Is(50)=0.43 MPa Is(50)=1.30 MPa Is(50)=0.47 MPa Is(50)=1.23 MPa	x o x o	
12	10.98		100											Siltstone band. Carbonaceous siltstone band.	Is(50)=0.95 MPa Is(50)=1.43 MPa	x o	
13						Borehole terminated at 12.12m											
14																	
15																	
16																	
17																	
18																	
19																	
20																	

REMARKS No groundwater reported during drilling. See Additional Descriptive Coding sheet for abbreviations.

LOGGED BY  
**J. Kleindienst**

Project: **Ipswich Motorway / Logan Motorway Interchange**  
 Borehole No: **BH4**  
 Start Depth: 3.05m  
 Finish Depth: 12.12m  
 Project No: FG5404  
 H No: 9738



SCALE 1:5

Project: **Ipswich Motorway / Logan Motorway Interchange**

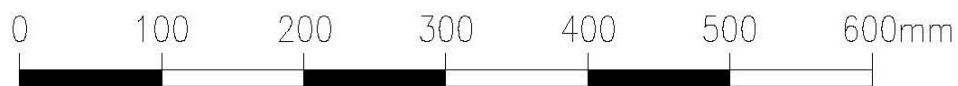
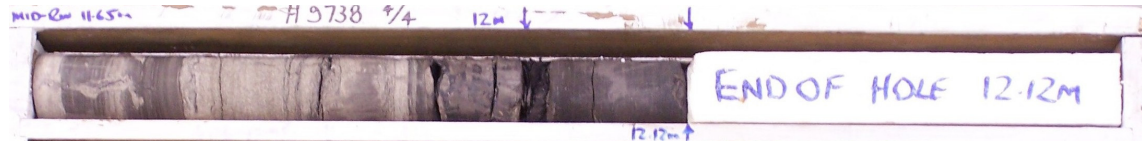
Borehole No: **BH4**

Start Depth: 3.05m

Finish Depth: 12.12m

Project No: FG5404

H No: 9738



SCALE 1:5