

COPYRIGHT NOTICE

This geotechnical log and its associated data (the Document) is licensed by the Queensland Department of Transport and Main Roads under the [Creative Commons Attribution 4.0 Licence](#) (CC BY 4.0). When reusing the Document, in whole or in part, please attribute the Department as follows: "*(c) State of Queensland (Department of Transport and Main Roads) 2020, licensed under the CC BY 4.0 Licence*". This licence does not apply to the Queensland Government logo or trademarks.

LIMITATION OF LIABILITY

The CC BY 4.0 Licence contains a comprehensive Disclaimer of Warranties and Limitation of Liability. In addition, please note that this Document was prepared for Departmental use only. Reuse of the Document by anyone for any other purpose could result in error and/or loss. You should obtain professional advice before making decisions based on the contents of the Document.

When reproducing any part of this Document, you must also reproduce this limitation of liability notice in addition to the italicised attribution statement above.

Retrieved from the Queensland Geotechnical Database <http://qgd.org.au/>

TEST PIT LOG

FOR GEOTECHNICAL TERMS AND SYMBOLS REFER FORM F:GEOT 017/6-2010

FEATURE No TP34
SHEET 1 of 1
DATE EXCAVATED 11/07/11

PROJECT Bruce Highway Upgrade (Cooroy to Curra) Section C
LOCATION Embankment 4 COORDINATES 472879.4 E; 7090332.8 N
PROJECT No FG5799 SURFACE R.L. 79.60 DATUM AHD SYSTEM MGA94 Zone 56
JOB No 232/10A/2 EQUIPMENT TYPE AND MODEL JCB Backhoe BUCKET SIZE 450mm

| DEPTH (m) | R.L. (m) | METHOD | USC WEATHERING | SOIL DESCRIPTION | VDCP LOG (Cone Resistance) | ADDITIONAL DATA AND TEST RESULTS | SAMPLE NUMBER | TEST REPORT |
|-----------|----------|--------|----------------|---|----------------------------|---|---------------|-------------|
| | | | | ROCK DESCRIPTION | VDCP34 (MPa) | | | |
| 0 | 79.60 | BUCKET | | SOIL TYPE : Colour, grain size, plasticity or particle characteristics, moisture, consistency, density, secondary components | 0 4 8 12 16 >20 | | | |
| | 79.45 | | ML | TOPSOIL Brown, moist, firm, clayey silt. Low plasticity, organics throughout, trace fine gravel up to 10mm. | | | | |
| | 79.00 | | CI | Gravelly Sandy CLAY (Residual?) Dark brown to red, moist, stiff to very stiff. Intermediate plasticity. | | LL = 43; PI = 20; LS = 11.2; MC = 19.8%; WPI=1348, WLS=739 FSV= 105/29 kPa | 11G0669 | 25176 |
| 1 | | | CH | Silty CLAY (Residual) Dark grey mottled with red, moist, stiff. High plasticity, trace sand and gravel. | | FSV= 88/41 kPa LL = 59; PI = 37; LS = 15.2; MC = 23.4%; WPI=2886, WLS=1186 | 11G0670 | 25177 |
| 2 | 78.15 | | HW | SILTSTONE HW: When excavated exhibits the engineering properties of grey mottled with red brown, dry, hard, silty gravel. | | MC = 14.3% | 11G0671 | 24872 |
| 3 | | | | Excavation terminated at 2.7m | | | | |
| 4 | 75.60 | | | | | | | |

QLD_DMR_LIB_01A_GLB_Log_A_TEST PIT LOG FG5799 - BRUCE HIGHWAY SECTION C TEST PIT LOGS.GPJ DWG58902.GDW Digital CPT Tool (P/N Add-in 28x112011 0802

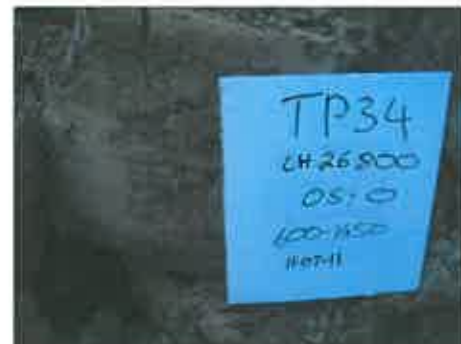
Site before excavation



Test pit profile



Excavated material from 0.6-1.45m



REMARKS MC-Moisture Content, LL-Liquid Limit, PI-Plastic Index, LS-Linear Shrinkage, WPI=PI x % pass 0.425mm sieve, WLS=LS x % pass 0.425mm sieve, FSV-Field Shear Vane, PP₁₀₀-Pocket Penetrometer, EC-Emerson Class Number

LOGGED BY
JD/JA